

**NOTICE OF MEETING TO BE HELD BY THE ANZALDUAS INTERNATIONAL BRIDGE
BOARD OF TRUSTEES**

DATE: Monday, February 10, 2025
TIME: 12:00 P.M.
PLACE: Council Chambers – McAllen City Hall, Third Floor

SUBJECT MATTERS:

1. Approval of minutes for the Regular Meeting held on November 11, 2024.
2. Anzalduas Intl. Bridge Southbound Empty Traffic Report – January 2025.
3. Anzalduas Southbound Traffic Count by Category – January 2025.
4. Anzalduas International Bridge Financial Statement for period ending December 31, 2024.
5. Discussion and Possible Action for Toll Revenue.
6. Consideration and Approval for Change Order No. 7 for the Anzalduas Bridge Infrastructure Improvements project.
7. Consideration and Approval for Change Order No. 8 for the Anzalduas Bridge Infrastructure Improvements project.
8. Chairman's, City Manager's, Superintendent of Bridges', Customs and Border Protection Report.
9. Engineering Report.
10. EXECUTIVE SESSION, CHAPTER 551, TEXAS GOVERNMENT CODE, SECTION 551.071 ATTORNEY-CLIENT PRIVILEGE AND PENDING OR CONTEMPLATING LITIGATION, SECTION 551.072 LAND TRANSACTION, SECTION 551.074 PERSONNEL MATTERS AND SECTION 551.086 DELIBERATION REGARDING ECONOMIC DEVELOPMENT NEGOTIATIONS.
 - a. Consultation with City Attorney regarding economic development (T.G.C. 551.087)

ADJOURNMENT

CERTIFICATION

I, the Undersigned authority, do hereby certify that the agenda of the meeting to be held by the McAllen/Hidalgo International Toll Bridge Board of Trustees is a true and correct copy and that I posted a true and correct copy of said notice on the bulletin board in the Municipal Building, a place convenient and readily accessible to the general public at all times, and said Notice was posted on the 7th day of **February, 2025 at 11:00 a.m.** and will remain so posted continuously for at least 72 hours preceding the scheduled time of said meeting in accordance with Chapter 551 of the Texas Government Code.



Hilda Cavazos, Management Assistant

If accommodations for a disability are required, notify the City Manager's Office at 681-1001 prior to the meeting.

Anzalduas International Bridge

STANDARDIZED RECOMMENDATION FORM

CITY COMMISSION _____
UTILITY BOARD _____
ANZALDUAS BRIDGE X

AGENDA ITEM 1
DATE SUBMITTED 01/30/25
MEETING DATE 02/10/25

1. Agenda Item: Approval of minutes for Regular Meeting held on November 11, 2024.
2. Party Making Request: Juan Olaguibel, ACM/Superintendent of Bridges
3. Nature of Request: (Brief Overview) Attachments: X Yes No

4. Policy Implication: _____
5. Budgeted: Yes No N/A

Bid Amount: _____ Budgeted Amount: _____
Under Budget: _____ Over Budget: _____
Amount Remaining: _____

If over budget how will it be paid for: _____

6. Alternate option/costs: _____

7. Routing:

<u>NAME/TITLE</u>	<u>INITIAL</u>	<u>DATE</u>	<u>CONCURRENCE</u>	
a) _____			Yes <u> </u>	No <u> </u>
b) _____			Yes <u> </u>	No <u> </u>
c) _____			Yes <u> </u>	No <u> </u>

8. Staff's Recommendation: Approve

Advisory Board: Approved Disapproved None

City Attorney: Approved Disapproved None

Manager's Recommendation: *AS* Approved Disapproved None

**STATE OF TEXAS
COUNTY OF HIDALGO
CITY OF MCALLEN**

The Anzalduas International Toll Bridge Board of Trustees met in joint session on November 11, 2024 in the Council Chambers – McAllen City Hall, Third Floor with the following present:

ANZALDUAS BRIDGE BOARD:

Norie Gonzalez Garza	Mayor of Mission-Vice Chair
Jim Darling	Bridge Board Member
Veronica Whitacre	Bridge Board Member
Martin Anzaldua	Bridge Board Member
Yvette Cabrera	Mayor of Granjeno non-voting member

ABSENT:

Javier Villalobos	Mayor of McAllen-Chairman
Sergio Coronado	Mayor of Hidalgo

ALSO PRESENT:

Isaac J. Tawil	City Manager, McAllen
Mike R. Perez	City Manager, Mission
Julian Gonzalez	City Manager, Hidalgo
Juan Olaguibel	Superintendent of Bridges, McAllen
Hilda Cavazos	Management Assistant, McAllen
Ana Gamez	Admin Assistant, McAllen
Michelle Rivera	Assistant City Manager, McAllen
Austin Stevenson	Interim, City Attorney, McAllen
David Vasquez	Finance Director, McAllen
Sonia Resendez	Assistant Finance Director, McAllen
Angie Rodriguez	Budget Director, McAllen
Eduardo Mendoza	Engineering Director, McAllen
Mario Cruz	Engineering Deputy Director, McAllen
Cesar Rodriguez	Director of Strategy Mgmt., McAllen
Carlos Rodriguez	Port Director, CBP
Elmer Martinez	CBP
Matt Wilson	Progress Times Newspaper

THE MEETING WAS CALLED TO ORDER AT 12:02 P.M. by Mayor Norie Garza.

1. Approval of Minutes for the Regular Meeting held on October 14, 2024.

A motion was made by Board Member Jim Darling, seconded by Board Member Veronica Whitacre, and carried unanimously to approve the minutes for the regular meeting held October 14, 2024 as presented.

2. Anzalduas Intl. Bridge Southbound Empty Traffic Report – October 2024.

Superintendent of Bridges, Juan Olaguibel reported the Anzalduas Southbound Empty Traffic Report for the month of October 2024.

3. **Anzalduas Southbound Traffic Count by Category – October 2024.**
Superintendent of Bridges, Juan Olaguibel reported the Anzalduas Intl. Bridge Southbound Traffic Count by category for the month of September 2024.
 4. **Anzalduas International Bridge Financial Statement for period ending September 30, 2024.**
A motion was made by Board Member Veronica Whitacre, seconded by Board Member Martin Anzaldua and carried unanimously to accept the financial statements for period ending September 30, 2024 as presented.
 5. **Consider and Approve Special and Startup Fund, Board Advance A and B Update as of dates indicated.**
A motion was made by Board Member Jim Darling, seconded by Board Member Martin Anzaldua and carried unanimously to approve Special and Startup Fund, Board Advance A and B Update as of dates indicated as presented by David Vasquez, Finance Director, McAllen.
 6. **Chairman’s, City Manager’s, Superintendent of Bridges’, Customs and Border Protection.**
Superintendent of Bridges’, Juan Olaguibel, gave an update on the Northbound Full Cargo project is at 65% completion.
 7. **Engineering Report.**
Eduardo Mendoza, Director of Engineering, gave update on Anzalduas Northbound project as well.
 8. **EXECUTIVE SESSION, CHAPTER 551, TEXAS GOVERNMENT CODE, SECTION 551.071 ATTORNEY-CLIENT PRIVILEGE AND PENDING OR CONTEMPLATING LITIGATION, SECTION 551.072 LAND TRANSACTION, SECTION 551.074 PERSONNEL MATTERS AND SECTION 551.086 DELIBERATION REGARDING ECONOMIC DEVELOPMENT NEGOTIATIONS.**
 - a. Consultation with City Attorney regarding economic development. (T.G.C. 551.087)
- 8a. No Action.

ADJOURNMENT

There being no other business to come before the Board, Mayor Norie Garza adjourned the meeting at 12:13 pm.

Mayor Javier Villalobos, Chairman

ATTEST:

Juan Olaguibel, ACM/Superintendent of Bridges

Anzalduas International Bridge

STANDARDIZED RECOMMENDATION FORM

CITY COMMISSION _____
UTILITY BOARD _____
ANZALDUAS BRIDGE _____ X _____

AGENDA ITEM 2
DATE SUBMITTED 01/30/25
MEETING DATE 02/10/25

1. **Agenda Item:** Anzalduas International Bridge Southbound Empty Traffic Report – January 2025.

2. **Party Making Request:** Juan Olaguibel, ACM/Superintendent of Bridges

3. **Nature of Request: (Brief Overview) Attachments:** X Yes ___ No

4. **Policy Implication:** _____

5. **Budgeted:** ___ Yes ___ No ___ N/A

Bid Amount: _____ Budgeted Amount: _____
Under Budget: _____ Over Budget: _____
Amount Remaining: _____

If over budget how will it be paid for: _____

6. **Alternate option/costs:** _____

7. **Routing:**

<u>NAME/TITLE</u>	<u>INITIAL</u>	<u>DATE</u>	<u>CONCURRENCE</u>	
a) _____			Yes _____	No _____
b) _____			Yes _____	No _____
c) _____			Yes _____	No _____

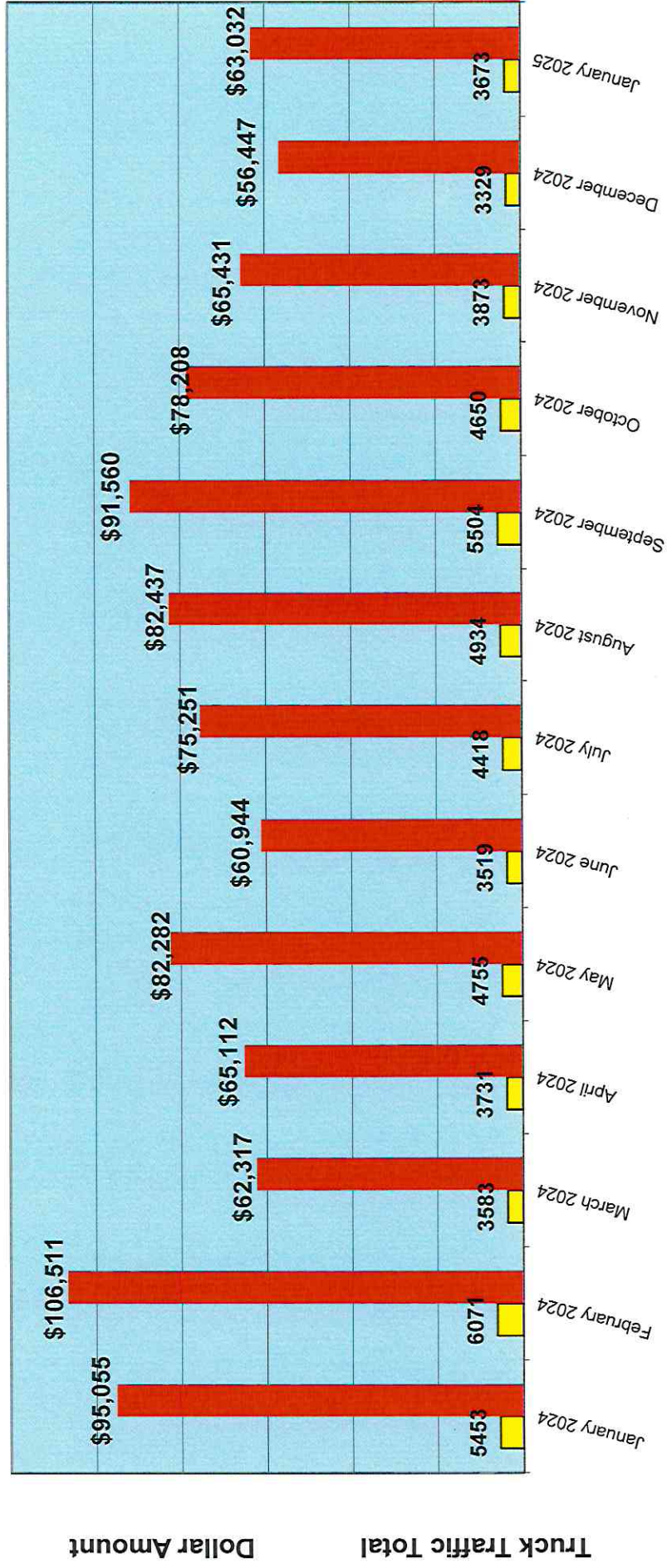
8. **Staff's Recommendation:** Report Only

Advisory Board: ___ Approved ___ Disapproved ___ None

City Attorney: ___ Approved ___ Disapproved ___ None

Manager's Recommendation:  ___ Approved ___ Disapproved ___ None

Anzalduas Commercial Traffic



Anzalduas International Bridge

STANDARDIZED RECOMMENDATION FORM

CITY COMMISSION _____
UTILITY BOARD _____
ANZALDUAS BRIDGE X

AGENDA ITEM 3
DATE SUBMITTED 01/30/25
MEETING DATE 02/10/25

1. Agenda Item: Anzalduas Southbound Traffic Count by Category – January 2025.

2. Party Making Request: Juan Olaguibel, ACM/Superintendent of Bridges

3. Nature of Request: (Brief Overview) Attachments: X Yes ___ No

4. Policy Implication: _____

5. Budgeted: ___ Yes ___ No ___ N/A

Bid Amount: _____ Budgeted Amount: _____
Under Budget: _____ Over Budget: _____
Amount Remaining: _____

If over budget how will it be paid for: _____

6. Alternate option/costs: _____

7. Routing:

<u>NAME/TITLE</u>	<u>INITIAL</u>	<u>DATE</u>	<u>CONCURRENCE</u>	
a) _____			Yes ___	No ___
b) _____			Yes ___	No ___
c) _____			Yes ___	No ___

8. Staff's Recommendation: Report Only

Advisory Board: ___ Approved ___ Disapproved ___ None

City Attorney: ___ Approved ___ Disapproved ___ None

Manager's Recommendation: *[Signature]* Approved ___ Disapproved ___ None

JANUARY 2025 Southbound Traffic (cars only)																		
Hidalgo-Pharr-Anzalduas-Donna						JANUARY 2025 Southbound Traffic (cars only)												
JANUARY 2025	Day	Hidalgo JANUARY 2025	Hidalgo % of Traffic	Pharr JANUARY 2025	Pharr % of Traffic	Anzalduas JANUARY 2025	Anzalduas % of Traffic	Donna JANUARY 2025	Donna % of Traffic	4 Bridges combined Traffic 2023	Hidalgo JANUARY 2024	Hidalgo 2024-2023 variance	Pharr JANUARY 2024	Pharr 2024-2023 variance	Anzalduas JANUARY 2024	Anzalduas 2024-2023 variance	Donna JANUARY 2024	Donna 2024-2023 variance
1	Saturday	5010	50%	788	8%	2857	29%	1363	14%	10018	4874	136	685	103	3332	(475)	1329	34
2	Sunday	6922	49%	1278	9%	4006	29%	1803	13%	14009	6624	298	1287	(9)	4401	(395)	1813	(10)
3	Monday	7730	48%	1610	10%	4466	28%	2281	14%	16087	7519	211	1473	137	4050	416	1923	358
4	Tuesday	8052	49%	1501	9%	4740	29%	2195	13%	16488	7983	69	1380	121	4148	592	1994	201
5	Wednesday	6734	48%	1037	7%	4559	32%	1766	13%	14096	8743	(2009)	1878	(841)	4970	(411)	2502	(736)
6	Thursday	7166	49%	1571	11%	3781	26%	1982	14%	14500	8614	(1448)	1505	66	4537	(756)	2501	(519)
7	Friday	7102	50%	1552	11%	3650	26%	1866	13%	14459	6878	224	980	572	4167	(507)	1709	157
8	Saturday	7452	52%	1498	10%	3708	26%	1801	12%	14189	7699	(247)	1258	240	3517	191	1878	(77)
9	Sunday	7301	51%	1592	11%	3625	25%	1759	12%	14277	8077	(776)	1230	362	3511	114	1804	(45)
10	Monday	8223	49%	1879	11%	4409	26%	2413	14%	16924	8272	(49)	1470	409	3586	823	1973	440
11	Tuesday	8451	52%	1470	9%	3945	24%	2477	15%	16343	8419	32	1079	391	28	2159	318	
12	Wednesday	7115	58%	1009	8%	4020	33%	1767	15%	12144	9488	(2373)	1313	(304)	4865	(845)	2865	(1098)
13	Thursday	7654	59%	1634	13%	3694	28%	2054	16%	12982	9395	(1741)	1572	62	4479	(785)	2716	(662)
14	Friday	7616	51%	1626	11%	3741	25%	1862	13%	14845	7341	275	979	647	3994	(253)	1901	(39)
15	Saturday	7939	52%	1625	11%	3797	25%	1961	13%	15322	7460	479	809	816	2932	865	1853	108
16	Sunday	8368	51%	1794	11%	4208	25%	2171	13%	16541	5914	2454	598	1,196	2433	1775	1230	941
17	Monday	8838	46%	2243	12%	5305	28%	2751	14%	19137	7599	1239	906	1,337	3022	2283	1659	1092
18	Tuesday	9083	50%	1615	9%	4701	26%	2778	15%	18177	8760	323	1006	609	3569	1132	2012	766
19	Wednesday	7359	51%	1083	7%	4168	29%	1854	13%	14464	9934	(2575)	929	154	4740	(572)	2736	(882)
20	Thursday	7049	54%	1338	10%	2993	23%	1659	13%	13039	8627	(1578)	1272	66	3758	(765)	2323	(664)
21	Friday	4180	54%	897	12%	1741	23%	904	12%	7722	5811	(1631)	741	156	3273	(1532)	1299	(395)
22	Saturday	6753	53%	1390	11%	2960	23%	1581	12%	12684	8032	(1279)	973	417	3769	(809)	2039	(458)
23	Sunday	7785	52%	1726	11%	3686	24%	1933	13%	15110	8370	(585)	1021	705	3696	(30)	2142	(209)
24	Monday	8754	48%	2107	12%	4744	26%	2542	14%	18147	8526	228	1349	788	3748	986	2112	430
25	Tuesday	9084	52%	1584	9%	4282	24%	2593	15%	17543	8334	750	1360	224	3785	497	2131	462
26	Wednesday	7053	52%	948	7%	3645	27%	1792	13%	13438	9273	(2220)	1704	(756)	4904	(1259)	2769	(977)
27	Thursday	7862	53%	1450	10%	3594	24%	1948	13%	14854	9506	(1644)	1456	(6)	4346	(752)	2523	(575)
28	Friday	7732	52%	1566	11%	3702	25%	1845	12%	14845	6875	857	953	613	4012	(310)	1890	(45)
29	Saturday	8028	53%	1525	10%	3736	25%	1882	12%	15171	8241	(213)	842	683	3666	70	1956	(74)
30	Sunday	8180	53%	1593	10%	3770	24%	2025	13%	15668	8513	(333)	854	854	3576	194	2097	(72)
31	Monday	8870	49%	2026	11%	4741	26%	2428	13%	18065	8756	114	1113	913	3700	1041	2104	324
		235,445	51%	46,555	10%	120,964	26%	62,036	13%	461,179	248,457	(13,012)	35,975	9,841	120,403	561	63,942	(1,906)

McAllen International Toll Bridge

Month	PEDESTRIANS		% VAR	CARS		% VAR	BUSES & OTHERS		% VAR.	Maquila Employee		% VAR.
	FY 2024	FY 2025		FY 2024	FY 2025		FY 2024	FY 2025		FY 2024	FY 2025	
OCTOBER 2024	109,848	120,834	10%	261,070	265,014	2%	1,423	1,198	-16%	200	210	5%
NOVEMBER	111,684	121,735	9%	250,503	251,002	0%	1,313	1,197	-9%	160	207	29%
DECEMBER	122,062	117,389	-4%	264,983	261,293	-1%	1,429	1,279	-10%	200	191	-5%
JANUARY 2025	99,712	93,518	-6%	248,457	235,445	-5%	1,379	1,168	-15%	165	193	17%
FEBRUARY			#DIV/0!			#DIV/0!			#DIV/0!			#DIV/0!
MARCH			#DIV/0!			#DIV/0!			#DIV/0!			#DIV/0!
APRIL			#DIV/0!			#DIV/0!			#DIV/0!			#DIV/0!
MAY			#DIV/0!			#DIV/0!			#DIV/0!			#DIV/0!
JUNE			#DIV/0!			#DIV/0!			#DIV/0!			#DIV/0!
JULY			#DIV/0!			#DIV/0!			#DIV/0!			#DIV/0!
AUGUST			#DIV/0!			#DIV/0!			#DIV/0!			#DIV/0!
SEPTEMBER			#DIV/0!			#DIV/0!			#DIV/0!			#DIV/0!
TOTALS	443,306	453,476	2%	1,025,013	1,012,754	-1%	5,544	4,842	-13%	725	801	10%

Anzalduas Bridge Crossing

Month	COMMERCIAL EMPTIES		% VAR	CARS		% VAR	BUSES & OTHERS		% VAR.	Maquila Employees		% VAR.
	FY 2024	FY 2025		FY 2024	FY 2025		FY 2024	FY 2025		FY 2024	FY 2025	
OCTOBER 2024	4,458	4,650	4%	122,872	135,557	10%	206	137	-33%	1,389	1,342	-3%
NOVEMBER	3,065	3,873	26%	131,169	139,933	7%	298	158	-47%	1,180	1,025	-13%
DECEMBER	2,628	3,329	27%	148,100	154,576	4%	211	74	-65%	1,004	933	-7%
JANUARY 2025	5,453	3,673	-33%	120,403	120,964	0%	142	73	-49%	1,269	1,143	-10%
FEBRUARY			#DIV/0!			#DIV/0!			#DIV/0!			#DIV/0!
MARCH			#DIV/0!			#DIV/0!			#DIV/0!			#DIV/0!
APRIL			#DIV/0!			#DIV/0!			#DIV/0!			#DIV/0!
MAY			#DIV/0!			#DIV/0!			#DIV/0!			#DIV/0!
JUNE			#DIV/0!			#DIV/0!			#DIV/0!			#DIV/0!
JULY			#DIV/0!			#DIV/0!			#DIV/0!			#DIV/0!
AUGUST			#DIV/0!			#DIV/0!			#DIV/0!			#DIV/0!
SEPTEMBER			#DIV/0!			#DIV/0!			#DIV/0!			#DIV/0!
TOTALS	15,604	15,525	-1%	522,544	551,030	5%	857	442	-48%	4,842	4,443	-8%

Anzalduas International Bridge

STANDARDIZED RECOMMENDATION FORM

CITY COMMISSION _____
UTILITY BOARD _____
ANZALDUAS BRIDGE X

AGENDA ITEM 4
DATE SUBMITTED 01/30/25
MEETING DATE 02/10/25

1. **Agenda Item:** Anzalduas International Bridge Financial Statement for the period ending December 31, 2024.

2. **Party Making Request:** Juan Olaquibel, ACM/Superintendent of Bridges

3. **Nature of Request: (Brief Overview) Attachments:** X Yes No

4. **Policy Implication:** _____

5. **Budgeted:** Yes No N/A

Bid Amount: _____ Budgeted Amount: _____
Under Budget: _____ Over Budget: _____
Amount Remaining: _____

If over budget how will it be paid for: _____

6. **Alternate option/costs:** _____


7. **Routing:**

<u>NAME/TITLE</u>	<u>INITIAL</u>	<u>DATE</u>	<u>CONCURRENCE</u>	
a) _____			<u> </u> Yes	<u> </u> No
b) _____			<u> </u> Yes	<u> </u> No
c) _____			<u> </u> Yes	<u> </u> No

8. **Staff's Recommendation:** Accept

Advisory Board: Approved Disapproved None

City Attorney: Approved Disapproved None

Manager's Recommendation:  Approved Disapproved None



**ANZALDUAS INTERNATIONAL
TOLL BRIDGE**

Financial Statements
For the Period Ending December 31, 2024
Prepared By
Juan Olaguibel, Superintendent of Bridges

Executive Summary

Anzalduas International Crossing

OPERATING RESULTS

For the Month Ending December 31, 2024

Comparison with Prior Year

Net income, as reflected on page 3, for the month of December is \$448,544 or a 14.34% increase compared to last year. Toll Revenues for the month were \$603,979 or a 5% increase compared to last year. Expenses were \$207,407 or a (13%) decrease compared to last year.

Comparison with Budget

Revenues over expenses, as reflected on page 4, for the month of December are \$572,155. Revenues over expenses were \$63,472 more than budget for the month. Total operating revenues were \$622,294 for the month. These total operating revenues were \$558 less than budget for the month. December's expenses were \$83,797 or \$55,320 less than budget for the month.

ANZALDUAS INTERNATIONAL TOLL BRIDGE FUND
STATEMENT OF NET ASSETS
For the Period Ending December 31, 2024

	Anzalduas Int'l Toll Bridge Fund	Series A Debt Service Fund	Series B Debt Service Fund	Anzalduas Cap Imprv Fund	NADBANK Debt Service Fund	Anzalduas Commercial Project Fund	Total
ASSETS							
<i>Current:</i>							
Cash on hand.....	\$ 13,632	\$ -	\$ -	\$ -	\$ -	\$ -	\$ 13,632
Cash in bank.....	281,104	-	-	-	-	-	281,104
Investments.....	6,552,933	-	-	-	-	-	6,552,933
Interest receivable.....	-	-	-	-	-	-	-
Total Current Assets	6,847,668	-	-	-	-	-	6,847,668
<i>Restricted Assets:</i>							
Contingency Fund..... X	575,381	-	-	-	-	-	575,381
Debt Service Fund.....	-	-	-	-	-	-	-
Capital Improvement Fund.....	-	-	-	-	-	-	-
Investments/TextPool	-	1,191,412	677,213	3,208,420	1,992,534	78,553,447	85,623,027
Cash	-	-	-	-	-	-	-
Certificates of Deposits - McAllen.....	-	-	-	-	-	-	-
Total Restricted Assets	575,381	1,191,412	677,213	3,208,420	1,992,534	78,553,447	86,198,408
<i>Fixed Assets:</i>							
Land.....	2,922,773	-	-	-	-	-	2,922,773
Buildings.....	3,012,370	-	-	-	-	-	3,012,370
Infrastructure.....	40,475,827	-	-	-	-	-	40,475,827
Development Costs.....	7,417,617	-	-	-	7,417,617	-	7,417,617
Construction in Progress	193,392	-	-	-	-	-	193,392
Imprv - other than bldge, Machinery & Equipment.....	1,961,287	-	-	-	-	-	1,961,287
	55,983,264	-	-	-	-	-	55,983,264
Less accumulated depreciation.....	22,600,668	-	-	-	-	-	22,600,668
Total Fixed Assets	33,382,597	-	-	-	-	-	33,382,597
<i>Other Assets, Net:</i>							
Bond Issue Cost / Series 2007 A	-	-	-	-	-	-	-
Bond Issue Cost / Series 2007 B	-	-	-	-	-	-	-
Deferred Outflows	159,675	-	-	-	-	-	159,675
Total Other Assets, net	159,675	-	-	-	-	-	159,675
TOTAL ASSETS	\$ 40,965,321	\$ 1,191,412	\$ 677,213	\$ 3,208,420	\$ 1,992,534	\$ 78,553,447	\$ 126,588,347
LIABILITIES AND FUND EQUITY							
<i>Current Liabilities:</i>							
Vouchers Payable.....	\$ 12,157	\$ -	\$ -	\$ -	\$ -	\$ -	\$ 12,157
Accrued Expenses	611,407	-	-	-	-	-	611,407
Retainage Payable.....	-	-	-	-	-	-	-
Interest Payable.....	-	-	-	-	-	-	-
Noncurrent Liabilities	202,635	-	-	-	-	-	202,635
Total Current Liabilities	826,198	-	-	-	-	-	826,198
<i>Payable from Restricted Assets:</i>							
Current installments of revenue bonds.....	3,175,000	-	-	-	-	-	3,175,000
Due to McAllen International toll bridge.....	-	-	-	-	-	-	-
Interest Payable.....	-	-	-	-	-	-	-
Liabilities Payable from Restricted Assets	3,175,000	-	-	-	-	-	3,175,000
<i>Long-term Liabilities:</i>							
Revenue Bonds, excluding current installments.....	15,505,000	-	-	-	-	-	15,505,000
NADBANK Bonds, excluding current installments.....	61,685,000	-	-	-	-	-	61,685,000
Bond Premiums	949,581	-	-	-	-	-	949,581
Deferred revenues / Other	184,278	-	-	-	-	-	184,278
Board Advance from / Hidl/McAll Bridge series "A"	4,611,768	-	-	-	-	-	4,611,768
Board Advance from / Start-up fund - original cost	7,220,129	-	-	-	7,220,129	-	7,220,129
Board Advance from / Start-up fund - after original cost	11,367,905	-	-	-	-	-	11,367,905
Total long-term liabilities	101,523,661	-	-	-	-	-	101,523,661
<i>Net Assets:</i>							
Net Investment in Capital Assets.....	13,753,015	-	-	-	-	-	13,753,015
<i>Restricted:</i>							
Contingency Fund.....	575,381	-	-	-	-	-	575,381
Bond Reserve Fund..... X	-	-	-	-	-	-	-
Capital Imprpovement.....	-	-	-	3,208,420	-	-	3,208,420
Anzalduas Commercial Project.....	-	-	-	-	-	78,553,447	78,553,447
Debt Service Fund.....	-	1,191,412	677,213	-	1,992,534	-	3,861,159
City of McAllen..... X	-	-	-	-	-	-	-
Total restricted	575,381	1,191,412	677,213	3,208,420	1,992,534	78,553,447	86,198,408
Unrestricted.....	(78,887,936)	-	-	-	-	-	(78,887,936)
Total Net Assets	(64,559,539)	1,191,412	677,213	3,208,420	1,992,534	78,553,447	21,063,488
TOTAL LIABILITIES AND NET ASSETS	\$ 40,965,321	\$ 1,191,412	\$ 677,213	\$ 3,208,420	\$ 1,992,534	\$ 78,553,447	\$ 126,588,347

ANZALDUAS INTERNATIONAL TOLL BRIDGE FUND
COMPARATIVE STATEMENT OF REVENUES AND EXPENSES
 For the Period Ending December 31, 2024

	Current Year	Prior Year	Variance	Incr/(Dec)
REVENUES:				
	December 2024	December 2023		
Tolls	\$603,979	\$574,480	\$29,499	5%
Rentals	1,546	1,017	529	52%
Miscellaneous	16,769	23,715	(6,946.06)	-29%
Interest	33,657	31,020	2,636.95	9%
Total Revenues	\$ 655,951	\$630,232	\$ 25,719	4.08%
EXPENSES:				
Administration	\$48,211	\$58,004	(9,793)	-17%
Bridge Operations	30,731	51,613	(20,882)	-40%
Insurance	4,855	4,855	-	0%
Depreciation	123,611	123,465	146	0%
Total Expenses	\$207,407	\$237,937	-\$30,530	-13%
NET INCOME/(LOSS)	\$ 448,544	\$392,295	\$ 56,249	14.34%

7/31/21

Transfer In: Anzald Debt SVC Series B

December 2024	December 2023	December 2024	December 2023
0	0	0	0
\$	\$	\$	\$

ANZALDUAS INTERNATIONAL TOLL BRIDGE FUND
STATEMENT OF OPERATING REVENUES AND OPERATING EXPENSES - BUDGET BASIS
For the Period Ending December 31, 2024

	Budget	Budget-by-Mth	Actual-by-Mth	Actual Variance with Budget Positive (Negative)	% Actual to Budget-by-Mth Positive (Negative)	Budget-to-Date	Actual-to-Date	Actual Variance with Budget Positive (Negative)	% Actual to Budget-to-Date Positive (Negative)
Operating Accounts									
Tolls	\$ 7,367,646	\$ 613,970	\$ 603,979	\$ (9,991)	-1.63%	\$ 1,841,910	\$ 1,726,206	\$ (115,704)	-6.28%
Rentals	12,204	1,017	1,546	529	0.00%	3,051	3,581	530	0.00%
Miscellaneous	81,000	6,749	16,769	10,020	148.47%	20,247	46,556	26,309	129.94%
Total Operating Revenues	<u>7,460,850</u>	<u>621,736</u>	<u>622,294</u>	<u>558</u>	<u>0.09%</u>	<u>1,865,208</u>	<u>1,776,343</u>	<u>(88,865)</u>	<u>-4.76%</u>
Non-Operating Accounts:									
Interest	312,774	\$ 26,064	33,657	7,593	100.00%	78,192	101,177	22,985	100.00%
Board Advance Interest	N/A	N/A	-	N/A	N/A	N/A	-	N/A	N/A
Total Non-Operating Revenues	<u>312,774</u>	<u>26,064</u>	<u>33,657</u>	<u>7,593</u>	<u>100.00%</u>	<u>78,192</u>	<u>101,177</u>	<u>22,985</u>	<u>100.00%</u>
Operating Revenues	7,773,624	647,800	655,951	8,151	1.26%	1,943,400	1,877,520	(65,880)	-3.39%
Expenses:									
Administration									
Salaries	188,288	20,613	12,520	8,093	39.26%	51,089	37,591	13,498	26.42%
Supplies	12,200	1,016	389	627	61.70%	3,048	1,376	1,673	54.87%
Other Services	457,000	38,079	34,765	3,314	8.70%	114,237	93,714	20,523	17.97%
Maintenance/Capital Outlay	7,000	582	537	45	7.79%	1,746	892	854	0.00%
Total Administration	<u>664,488</u>	<u>60,290</u>	<u>48,211</u>	<u>12,079</u>	<u>20.04%</u>	<u>170,120</u>	<u>133,572</u>	<u>36,548</u>	<u>21.48%</u>
Operations:									
Salaries	616,582	65,883	24,667	41,216	62.56%	166,001	99,378	66,623	40.13%
Supplies	15,000	1,249	102	1,147	91.81%	3,747	1,208	2,539	67.76%
Other Services	41,010	3,416	2,099	1,317	38.56%	10,248	6,034	4,214	41.12%
Maintenance/Capital Outlay	41,094	3,424	3,863	(439)	-12.83%	10,272	13,824	(3,552)	-34.58%
Total Operations	<u>713,686</u>	<u>73,972</u>	<u>30,731</u>	<u>43,241</u>	<u>58.46%</u>	<u>190,268</u>	<u>120,444</u>	<u>69,825</u>	<u>36.70%</u>
Non-department									
Liability Insurance	250,261	4,855	4,855	-	0.00%	14,565	14,565	-	0.00%
Total Non-department	<u>250,261</u>	<u>4,855</u>	<u>4,855</u>	<u>-</u>	<u>0.00%</u>	<u>14,565</u>	<u>14,565</u>	<u>-</u>	<u>0.00%</u>
Expenses	1,628,435	139,117	83,797	55,320	39.77%	374,963	268,581	106,372	28.37%
Revenues Over(Under) Expenses*	\$ 6,145,189	\$ 508,683	\$ 572,155	\$ 63,472	12.48%	\$ 1,568,447	\$ 1,608,938	\$ 40,491	2.58%

* Depreciation expenses is not included in the statement

Anzalduas International Bridge

STANDARDIZED RECOMMENDATION FORM

CITY COMMISSION _____
UTILITY BOARD _____
ANZALDUAS BRIDGE X

AGENDA ITEM 5
DATE SUBMITTED 01/30/25
MEETING DATE 02/10/25

1. Agenda Item: Discussion and Possible Action for Toll Revenue.
2. Party Making Request: Juan Olaguibel, ACM/Superintendent of Bridges
3. Nature of Request: (Brief Overview) Attachments: X Yes No

4. Policy Implication: _____

5. Budgeted: Yes No N/A

Bid Amount: _____

Budgeted Amount: _____

Under Budget: _____

Over Budget: _____

Amount Remaining: _____

If over budget how will it be paid for: _____

6. Alternate option/costs: _____

7. Routing:

<u>NAME/TITLE</u>	<u>INITIAL</u>	<u>DATE</u>	<u>CONCURRENCE</u>	
a) _____			Yes <u> </u>	No <u> </u>
b) _____			Yes <u> </u>	No <u> </u>
c) _____			Yes <u> </u>	No <u> </u>

8. Staff's Recommendation: _____

Advisory Board: Approved Disapproved None

City Attorney: Approved Disapproved None

Manager's Recommendation:  Approved Disapproved None



MEMO

TO: ISAAC J. TAWIL, McALLEN CITY MANAGER
FROM: JUAN OLAGUIBEL, ASST. CITY MANAGER
DATE: JANUARY 29, 2025
RE: POSSIBLE TOLL INCREASE

Current Toll Revenue

<u>Southbound Vehicle Traffic</u>	<u>.50 increase</u>
\$3.50	\$4.00

Other International Bridges

Donna International Bridge	\$4.00
Pharr International Bridge	\$5.00

The last toll increase at McAllen-Hidalgo and Anzalduas International Bridge was in 2015.

Staff recommends increase of tolls.

Anzalduas International Bridge

STANDARDIZED RECOMMENDATION FORM

CITY COMMISSION _____
UTILITY BOARD _____
ANZALDUAS BRIDGE X

AGENDA ITEM 6
DATE SUBMITTED 01/30/25
MEETING DATE 02/10/25

1. **Agenda Item:** Consideration and Approval for Change Order No. 7 for the Anzalduas Bridge Infrastructure Improvements project.

2. **Party Making Request:** Juan Olaquibel, ACM/Superintendent of Bridges

3. **Nature of Request: (Brief Overview) Attachments:** X Yes No

4. **Policy Implication:** _____

5. **Budgeted:** Yes No N/A

Bid Amount: _____ Budgeted Amount: _____
Under Budget: _____ Over Budget: _____
Amount Remaining: _____

If over budget how will it be paid for: _____

6. **Alternate option/costs:** _____

7. **Routing:**

<u>NAME/TITLE</u>	<u>INITIAL</u>	<u>DATE</u>	<u>CONCURRENCE</u>	
a) _____			Yes <u> </u>	No <u> </u>
b) _____			Yes <u> </u>	No <u> </u>
c) _____			Yes <u> </u>	No <u> </u>

8. **Staff's Recommendation:** _____

Advisory Board: Approved Disapproved None

City Attorney: Approved Disapproved None

Manager's Recommendation: Approved Disapproved None



**ENGINEERING DEPARTMENT
MEMORANDUM**

To: Isaac J. Tawil, City Manager

From: Eduardo Mendoza, P.E., P.T.O.E., City Engineer

Date: February 10, 2025

**Subject: Change Order No. 7 – Anzalduas Bridge Infrastructure Improvements
Project No.: 07-22-C29-802**

Goal

Consideration and approval of Change Order No. 7 for the Anzalduas Bridge Infrastructure Improvements project.

Explanation

This item expands the current project scope at the Inbound (Northbound) facility which includes modifications to electrical switchgear components and the addition of an Automatic Throw-over (ATO) switch. The components will ensure uninterrupted electrical service vital to the Port's functions.

A brief contract summary is presented below.

	Amount	Working Days
Original Contract	\$ 81,861,364.52	320
Previous Change Orders	\$ 1,906,177.69	80
Change Order No. 7	\$ 121,479.83	0
Revised Contract	\$ 83,889,022.04	400

Detailed supporting documentation is attached for your review.

Options

- 1) Approve Change Order No. 7
- 2) Disapprove Change Order No. 7 and renegotiate fee

Recommendation

RRP Consulting Engineers, LLC., and staff recommend approval of Change Order No. 7 in the amount of **\$121,479.83** with **no additional working days** for a revised contract amount of **\$83,889,022.04** and unchanged contract time of **400-working days**, subject to a budget amendment.



01/29/2025

Isaac J. Tawil,
City of McAllen City Manager
1300 Houston Avenue
City Hall – 2nd Floor
McAllen, TX 78501

RE: Recommendation of Approval Change Order No. 7

Dear Isaac,

The purpose of this letter is to provide a recommendation for approval of the scope of work called for by ASI 42 and all change order supporting documentation. This work includes modifications to the main circuit breakers in Switchgear M1/M2/G1 to motorize. Installation and startup of the ATO, furnish and field install of ATO cabinet in Emergency Switchboard Room of the Main Building for the Azalduas Land Port of Entry.

If you have any questions, please call me or RRP at (956) 926-5000 or via e-mail at ppawelek@rrpeng.com.

Sincerely,

Phillip J. Pawelek, PE
Project Manager

Attachments

R.R.P. Consulting Engineers, L.L.C.

5400 N. 10th Street, McAllen, TX 78504 • Tel: 956-926-5000 • www.rrpeng.com



CHANGE ORDER

NO. 7

PROJECT: Anzalduas International Bridge Port of Entry Outbound Commercial Inspection Facilities

DATE OF ISSUANCE: 01/15/25

OWNER: City of McAllen
ADDRESS: P.O. Box 220
McAllen, TX 78505-0220

CONTRACTOR: D Wilson
ADDRESS: P.O. Box 3455
McAllen, Texas 78502

OWNER'S PROJECT NO. 07-22-C23-802

CONTRACT FOR:

TXDOT'S PROJECT NO. INBOUND CSJ# 0921-02-379

You are directed to make the following changes in the Contract Documents.

Description: Scope of work called for by ASI 42 and all change order supporting documentation. This work includes modifications to motorize the main circuit breakers in Switchgear. Install and startup of the ATO, furnish & field install Cabinet.
Purpose of Change Order: Automatic Throwover (ATO) added into the system with the new Switchgear

Attachments: (List documents supporting change): PLAN SHEETS E003,E402,E403,AND E404

Table with 2 columns: CHANGE IN CONTRACT PRICE and CHANGE IN CONTRACT TIME. Rows include Original Contract Price, Previous Change Orders No 1 thru 6, Contract Price prior to this Change Order, Net Increase of this Change Order, and Contract Price with all approved Change Orders.

APPROVED: by Isaac J. Tawil, City Manager

APPROVED: by Josue Reyes, President & CEO

ACKNOWLEDGED: by Gerardo Noriega, Director of Purchasing and Contracting

RECOMMENDED: by Eduardo Mendoza, P.E.P.T.O.E., City Engineer

CONSTRUCTION CONTRACT CHANGE ORDER NUMBER: 7

1. CONTRACTOR: D. WILSON CONSTRUCTION COMPANY
2. Change Order Work Limits: Sta. _____ to Sta. _____
3. Type of Change (on federal-aid non-exempt projects): Minor (Major/Minor)
4. Describe the change and the reason for the change order. When necessary, include exceptions to this agreement.

scope of work called for by ASI 42 and all change order supporting documentation. This work includes modifications to motorize the main circuit breakers in Switchgear. Install and startup of the ATO, furnish & field install Cabinet.

CCSJ: 0921-02-379

Project: Anzalduas LPOE

Highway: Anzalduas Int'l Brid

County: Hidalgo

District: Pharr

Contract Number: 07-22-C29-802

5. New or revised plan sheet(s) are attached and numbered: PLAN SHEETS E003,E402,E403,AND E404

Each signatory hereby warrants that each has the authority to execute this Change Order.

<p>By signing this change order, the contractor agrees to waive any and all claims for additional compensation due to any and all other expenses; additional changes for time, overhead and profit; or loss of compensation as a result of this change. Further, the contractor agrees that this agreement is made in accordance with Item 4 and the Contract. Exceptions should be noted in the response for #5 above.</p>	<p>The following information must be provided</p> <p>Time Ext. #: _____ Days added on this C.O.: _____</p> <p>Amt. added by this change order: <u>\$ 121,479.83</u></p>
<p>D Wilson Constructruction Company Date <u>1/29/25</u></p> <p>By <u>Josue Reyes</u></p> <p>Typed/Printed Name <u>Josue Reyes</u></p> <p>Typed/Printed Title <u>President & CEO</u></p>	<p>For TxDOT use only:</p> <p>Days participating: _____</p> <p>Amount participating: _____</p> <p>Signature _____ Date _____</p> <p>Name/Title _____</p>

RRP CONSULTING ENGINEERS, LLC

Guillermo Arratia , P.E.
PRINTED NAME AND TITLE

Guillermo Arratia, P.E. 01/29/25
SIGNATURE DATE

City of McAllen - Owner

Isaac J. Tawil, City Manager
PRINTED NAME AND TITLE

SIGNATURE DATE

Director of Purchasing & Contracting, City of McAllen

Gerardo Noriega
PRINTED NAME AND TITLE

SIGNATURE DATE

City Engineer - City of McAllen

Eduardo J. Mendoza, PE, PTOE
PRINTED NAME AND TITLE

SIGNATURE DATE

Superintendent of Bridges, City of McAllen

Juan Olaguibel
PRINTED NAME AND TITLE

SIGNATURE DATE



PCO #052

D. Wilson Construction
 PO Box 3455
 McAllen, Texas 78502
 Phone: (956) 686-9573
 Fax: (956) 686-3270

Project: 22-192 - McAllen Anzalduas LPOE Expansion
 5911 S Stewart Rd
 Mission, Texas 78572-1500

Prime Contract Potential Change Order #052: ASI 42 - Switchgear ATO Add

TO:	City of McAllen PO Box 220 McAllen, Texas 78505	FROM:	D Wilson Construction Company PO Box 3455 McAllen, Texas 78502
PCO NUMBER/REVISION:	052 / 1	CONTRACT:	22-192 - McAllen Anzalduas LPOE Expansion
REQUEST RECEIVED FROM:		CREATED BY:	William Northcutt (D Wilson Construction Company)
STATUS:	Pending - In Review	CREATED DATE:	12/18/2024
REFERENCE:		PRIME CONTRACT CHANGE ORDER:	None
EXECUTED:	No	SIGNED CHANGE ORDER RECEIVED DATE:	
SCHEDULE IMPACT:	128 days	TOTAL AMOUNT:	\$121,479.83

POTENTIAL CHANGE ORDER TITLE: ASI 42 - Switchgear ATO Add

CHANGE REASON: Design Development

POTENTIAL CHANGE ORDER DESCRIPTION: *(The Contract Is Changed As Follows)*

CE #172 - ASI 42 - Switchgear Modifications (ATO)

Design changes per ASI 42 attached. Includes modifications to the main circuit breakers in Switchgear M1/M2/G1.

Lead time for the ATO Cabinet is 12 weeks.

Lead time for Circuit breaker parts is 16 weeks.

Upon approval, a time impact analysis in accordance with Item 8, Prosecution and Progress, Article 5.5.4. Time Impact Analysis. D. Wilson Construction Company reserves rights for additional compensation in accordance with Item 4L, Scope of Work, Article 6.2 Project Overhead.

ATTACHMENTS:

[ASI 42 - ATO Provisions \(SJPA 10-24-24\)R.pdf](#) , [CPR #30.pdf](#)

#	Budget Code	Description	Amount
1	129.16-100.S	ASI 42 - ATO added to Switchgear	\$115,695.08
2	BF-997.OVH	DWCC - Contractor Overhead	\$5,784.75
Grand Total:			\$121,479.83


RRP Consulting Engineers
 5408 N. 10th. Street
 McAllen, Texas 78504

City of McAllen
 PO Box 220
 McAllen, Texas 78505

D Wilson Construction Company
 PO Box 3455
 McAllen, Texas 78502

 01/29/2025
 SIGNATURE DATE

 SIGNATURE DATE

 1/17/2025
 SIGNATURE DATE



METRO ELECTRIC, INC.

TECL # 17140

MAIN OFFICE

1901 INDUSTRIAL DRIVE
McALLEN, TX 78504-4015
(956) 686-2323

BRANCH OFFICE

5255 COMMERCIAL DRIVE
BROWNSVILLE, TX 78521-5260
(956) 831-7801

HARLINGEN, TX 78550
(956) 421-2600

WWW.METROELECTRIC-RGV.COM

November 20, 2024

D. Wilson Construction Co.
PO Box 3455
McAllen, TX 78501

Attn: William Northcutt
Ref: Anzalduas LPOE Expansion – McAllen, TX
(Metro CPR #30)

Please add ~~\$122,282.00~~ to our base contract amount for the following changes.

\$115,695.08

WRN

SCOPE OF WORK

The scope of work for this CPR includes changes called for by ASI 42. This includes modifications to the main circuit breakers in Switchgear M1/M2/G1 to motorize them. The ATO cabinet and start-up is included as indicated in the attached quote from Square D. The lead time on the ATO cabinet is 12 weeks. The lead time for the circuit breaker parts is 16 weeks. Once the parts have arrived, the work to install the ATO and modify the circuit breakers will take up to five workdays.

Any concrete or asphalt cutting or patch back is not included.

Temporary power is not included in this CPR.

This proposal is valid for 10 days.

Metro Electric, Inc. will place the purchase order upon receipt of the signed authorization for this change order. Lead times are from the time when the purchase order is placed.

Should you have any questions, please advise.

Sincerely,
Metro Electric, Inc.

Matthew P. Diehl
Estimator

File C.O. #03567
CC: Sergio Lerma
Cesar Cantu
Armando Cid

COMMERCIAL • INDUSTRIAL

Regulated by The Texas Department of Licensing and Regulation, P.O. Box 12157, Austin, Texas 78711,
1-800-803-9202, 512-463-6599; website: www.tdlr.texas.gov/complaints

Change Price Request Cost Analysis

PROJECT: Anzalduas LPOE Expansion - McAllen, TX
 CONTRACTOR: D. Wilson Construction

DESCRIPTION OF CHANGE:
Changes called for by ASI 42

Metro Electric, Inc - CPR# 30, Page 1 of 3

Description	Quan. Reqd.	Material Cost	Unit	Material Total	Labor Total
				\$ -	\$ -
3/4" EMT CONDUIT	300.00	\$ 238.41	C	\$ 715.23	\$ 925.31
3/4" EMT CONN	10.00	\$ 219.88	C	\$ 21.99	\$ 277.59
3/4" EMT COUP	40.00	\$ 246.26	C	\$ 98.50	\$ 518.18
3/4" EMT CLAMP	40.00	\$ 277.68	C	\$ 111.07	\$ 111.04
1" EMT CONDUIT	50.00	\$ 393.48	C	\$ 196.74	\$ 252.92
1" EMT CONN	4.00	\$ 381.03	C	\$ 15.24	\$ 128.31
1" EMT COUP	7.00	\$ 368.87	C	\$ 25.82	\$ 103.64
1" EMT CLAMP	7.00	\$ 308.38	C	\$ 21.59	\$ 19.43
1" GRC	55.00	\$ 491.00	C	\$ 270.05	\$ 356.25
1" GRC COUP	6.00	\$ 420.00	C	\$ 25.20	\$ 38.86
1" GRC ELBOW	4.00	\$ 32.86	E	\$ 131.44	\$ 185.06
1" GRC LB CONDULET	3.00	\$ 126.29	E	\$ 378.87	\$ 222.08
1" GRC LOCKNUT	8.00	\$ 35.27	C	\$ 2.82	\$ 98.70
1" GRC CLAMP	6.00	\$ 308.38	C	\$ 18.50	\$ 16.66
1 1/2" GRC	55.00	\$ 658.62	C	\$ 362.24	\$ 458.03
1 1/2" GRC COUP	6.00	\$ 441.00	C	\$ 26.46	\$ 49.97
1 1/2" GRC ELBOW	4.00	\$ 51.13	E	\$ 204.52	\$ 276.36
1 1/2" GRC LB CONDULET	3.00	\$ 234.69	E	\$ 704.07	\$ 416.39
1 1/2" GRC LOCKNUT	8.00	\$ 70.84	C	\$ 5.67	\$ 148.05
1 1/2" GRC CLAMP	6.00	\$ 364.66	C	\$ 21.88	\$ 22.21
				\$ -	\$ -
Subtotals				\$ 3,357.90	\$ 4,625.02

Change Price Request Cost Analysis

PROJECT: Anzalduas LPOE Expansion - McAllen, TX
 CONTRACTOR: D. Wilson Construction

DESCRIPTION OF CHANGE:
Changes called for by ASI 42

Description	Quan. Reqd.	Material Cost	Unit	Material Total	Labor Total
				\$ -	\$ -
1" PVC 80	94.00	\$ 111.52	C	\$ 104.83	\$ 458.09
1" PVC FEM ADPT	2.00	\$ 266.72	C	\$ 5.33	\$ 33.31
1" PLASTIC BUSH	4.00	\$ 0.25	E	\$ 1.00	\$ 49.35
1 1/2" PVC 80	94.00	\$ 174.66	C	\$ 164.18	\$ 608.86
1 1/2" PVC FEM ADPT	2.00	\$ 424.06	C	\$ 8.48	\$ 45.65
1 1/2" PLASTIC BUSH	4.00	\$ 0.43	E	\$ 1.72	\$ 74.03
1" CORE & SLEEVE	1.00	\$ 27.98	E	\$ 27.98	\$ 92.53
1 1/2" CORE & SLEEVE	1.00	\$ 31.66	E	\$ 31.66	\$ 107.95
CONDUIT SCOTCHWRAP	3.00	\$ 18.51	E	\$ 55.53	\$ 370.13
FEEDER DITCH	55.00	\$ -	X	\$ -	\$ 678.56
DETECTABLE WARNING TAPE	168.00	\$ 136.84	M	\$ 22.99	\$ 124.36
RS485 CABLE	664.00	\$ 496.86	M	\$ 329.92	\$ 737.29
18/2 CBLE	756.00	\$ 179.58	M	\$ 135.76	\$ 746.17
ATO CABINET	1.00	\$ -	Q	\$ -	\$ 2,714.25
				\$ -	\$ -
				\$ -	\$ -
				\$ -	\$ -
				\$ -	\$ -
				\$ -	\$ -
				\$ -	\$ -
				\$ -	\$ -
Subtotals				\$ 889.38	\$ 6,840.53

Change Price Request Cost Analysis

PROJECT: Anzalduas LPOE Expansion - McAllen, TX
 CONTRACTOR: D. Wilson Construction

DESCRIPTION OF CHANGE:
 Changes called for by ASI 42

Metro Electric, Inc - CPR#30, Page 3 of 3

Description	Quan. Reqd.	Material Cost	Unit	Material Total	Equipment Cost	Unit	Equipment Total	Labor Total
****QUOTE****	1.00	\$ 74,100.00		\$ 74,100.00				
SQUARE D QUOTE -- INCLUDES		\$ 80,494.00			WRN			
ATO CABINET AND PLC								
FIELD SERVICE FOR THE FOLLOWING								
CHANGE MAIN CIRCUIT BREAKERS TO								
MOTORIZED CIRCUIT BREAKERS								
REMOVE KIRK KEYS								
STARTUP FOR THE ATO								
****EQUIPMENT****								
BACKHOE	16.00				\$ 71,445.66	E	\$ 1,066.00	\$ 1,143.12 WRN
TAMPER	16.00				\$ 15,151.40	E	\$ 224.00	\$ 242.48 WRN
SUMMARY OF CPR #30								
TOTALS FROM PAGE 1	1.00	\$ 3,357.90		\$ 3,357.90				4,625.02
TOTALS FROM PAGE 2	1.00	\$ 889.38		\$ 889.38				6,840.53
SAFETY COORDINATION	1.00							343.97
Subtotals				\$ 84,741.29		WRN	\$ 1,385.60	\$ 11,809.51

5% for subcontracting

WRN

WRN

WRN

Schneider Subtotal: \$6,395.00
 Plus 5% Contracting: 319.75
 Total: \$6,714.75 WRN

\$74,100.00
 \$18,525.00 WRN
 \$92,625.00

\$1.15, 695.08 WRN

Subtotal Material	\$ 64,741.29
Plus 25% Material	\$ 21,165.92
Total Material	\$ 495,926.64
Subtotal Equipment and Tax	\$ 1,385.60
Plus 15% Equipment	\$ 207.84
Total Equipment	\$ 1,593.44
Subtotal Labor	\$ 11,809.51
Plus 25% Labor	\$ 2,952.38
Total Labor	\$ 14,761.89
Subtotal Material, Labor & Equipment	\$ 122,261.94

Prepared By:
Sharon Coons
Schneider Electric USA, Inc
Specialist, Customer Project
sharon.coons@se.com

Order Number: 0050591131
Proposal Name: Anzalduas Bridge Infrastructure
Change Quote Name: ATO Cabinet

Order Number: 0050591131
Proposal Number: P-220412-2976344
PO Number: 4437-JS94264OD
Change Quote Number: Q-5463969
Quote Date: 11/04/2024
Through Addenda Number: 0
Sales Representative: Greg Braddy

Conditions of Sale

This Quotation is subject to Coordinated Project Terms. See <https://www.se.com/us/en/download/document/0100PL0043/>

Quoted price in currencies other than U.S. Dollars is per the annual Schneider Electric exchange guidance.
Quote is valid for 30 days. Quoted lead times are approximate and subject to change.

Schneider Electric reserves the right to amend, withdraw or otherwise alter this submission without penalty or charge as a result of any event beyond its control arising from or due to the current Covid-19 epidemic or events subsequent to this epidemic / pandemic including changes in laws, regulations, by laws or direction from a competent authority.

Pricing

Total Authorized Equipment	\$74,100.00
Total Authorized Services	\$6,395.00
Total AUTHORIZED	\$80,494.00

This Change Order includes the following Warranty/FOB additions and will be reflected in the project total once applied:

Total Warranty	\$0.00
Total FOB	\$0.00

Seq #	Qty	Product Description
1	1	Designation : DES CONTROLS - ATO Product Details :ATO -DESC-ATO -DESC-MTGM Open Transition ATO Cabinet

Seq #	Qty	Product Description
2	1	Designation : DES CONTROLS-MTGM STARTUP Product Details :ATO STARTUP - DESC-ATO STARTUP - DESC-MTGM On-Site ATO Startup

Seq #	Qty	Product Description
3	1	Designation : ATO Product Details :SRVODSOTHLVMLABOR-SRVODSOTHLVMLABOR-SERVICES FIELD WORK ATO



September 22, 2024

ANZALDUAS BRIDGE MTGM ATO – MCALLEN, TX
QUOTE # DCS092224A

SCHNEIDER ELECTRIC DATA CENTER SOLUTIONS (SE DCS) PROPOSAL

Schneider Electric Data Center Solutions (SE DCS) is pleased to provide you with this proposal for the Main-Tie-Gen-Main ATO for Switchgear.

SCOPE OF WORK

- Schneider Electric Data Center Solutions (SE DCS) will provide a stand-alone enclosure NEMA1 (estimated 32" wide) to control two utility fed main breakers, one tie breaker, and a generator fed main breaker. The following features are included:
 - Open Transition ATO Between All Sources, Utilities & Generator
 - Schneider Electric M340 PLC
 - 120VAC CPT Transfer Scheme & UPS
 - Basler ES Series 27/47, 59, & 81 Source Detection Relays
 - Accessories for NW Breakers to Enable ATO Operation include: Replacement Covers After Kirk Keys are Removed, 120VAC Charging Motors, 120VAC Shunt Trip Coil, 120VAC Shunt Close Coil for MTGM (4) breakers.

DELIVERABLES

- ATO Submittal including Drawings & Field Interconnect Drawings, BOM, & Sequence of Operation
- On-Site ATO Startup During Normal Business Hours in McAllen, TX (1 Day/Visit)

CLARIFICATIONS

- Schneider Electric Services will be required on-site prior to the ATO Startup to remove the 4 NW Breaker kirk keys and install replacement covers as well as install 4 NW drawout type charging motors, shunt trip and shunt close coils. Services will also install qty 3 3 pole fuse switches for remote ATO source detection. Two of those switches will be installed in the SE meter compartment sharing the utility meter PT inputs. The generator fuse switch will need to be installed in cubicle 4D and wired to cubicle 4BC where Services will need to tap the line side of the generator breaker.
- Field Raceways, wire, & terminations between ATO Cabinet to the switchgear and generator will be the **responsibility of the electrical contractor**.

- SE DCS assumes the site and equipment will be ready and available for work related to SE DCS scope of work. Delays or redeployment requirements beyond our control will be billed in addition to the costs in this proposal.

TERMS AND CONDITIONS

The work described in this proposal will be performed in accordance with Schneider Electric Terms and Conditions of Supply and Performance, which are attached to this proposal. Unless agreed to in writing, no other terms and conditions shall apply and any preprinted terms and conditions on customer's purchase order are specifically rejected.

INVOICING

Work shall be invoiced monthly based on percentage of completion. Payment is due net 30 days from receipt of invoice.

ARCHITECTURAL SUPPLEMENTAL INSTRUCTION

PROJECT NAME: *Anzalduas Full Commercial Project*

PROJECT NO: *20-0002-000*

DATE: October 24, 2024

ASI NO.: *ASI No. 42*

This architectural supplemental instruction shall be carried out in accordance with the following supplemental instructions issued in accordance with the Contract Documents without change in Contract Sum or Contract Time. Proceeding with the Work in accordance with these instructions indicates your acknowledgment that there will be no change in the Contract Sum or Contract Time. All other provisions of the documents remain unchanged.

CHANGES TO DOCUMENTS ARE AS FOLLOWS:

General: The documents contained within this Architectural Supplemental Instruction (ASI) summarize the modifications required for the following Scope of Work (SOW). The work has been bubbled and identified as Delta Mark 7. The respective sheet revision notes are noted as ASI #43.

1. *ATO Provisions*
 - a. *Additional conduit and electrical equipment provided.*
 - b. *Additional annotations provided*
 - c. *New drawing details provided.*

SPECIFICATION – NO WORK

GENERAL – NO WORK

CIVIL (C) SHEETS – NO WORK

ARCHITECTURAL (A) SHEETS – NO WORK

STRUCTURAL (S) SHEETS – NO WORK

PLUMBING (P) SHEETS – NO WORK

MECHANICAL (M) SHEETS – NO WORK

ELECTRICAL (E) SHEETS

1. *SHEET E003 – ELECTRICAL SITE POWER PLAN – ATO Provisions*
 - a. *Revised drawing*
 - i. *Detail 2: Added location information related to the installation of an ATO Cabinet and Remote Load Bank Control Panel. Both are to be installed in the*

Emergency Switchboard Room of the Main Building. The ATO Cabinet shall be installed in the space now occupied by to-be-demolished Switchboard "EPS".

- ii. Detail 2: Conduit between the outdoor Switchgear "M1 / M2" and the indoor ATO Cabinet has been added.*

2. SHEET E402 – ONE LINE DIAGRAM – NEW SWITCHBOARD – ATO Provisions

a. Revised drawing

- i. General: In response to RFI 140 (1/2/2024), automatic throwover (ATO) functions are being removed in existing Switchboards "MSB-L" and "MSB-R" to avoid creation of a parallel path of the grounded conductor ("neutral"). These ATO functions need to be added back into the system within new Switchgear "M1 / M2". Revisions to this sheet direct Contractor to changes necessary to allow ATO functions to be field-installed into new outdoor Switchgear "M1 / M2" and within the adjacent Emergency Switchboard Room of the Main Building.*
- ii. Hatched the ATO function in existing Switchboard "MSG-L" and "MSG-R" and tie circuit breaker to be deleted as described in RFI 140 (1/2/2024).*
- iii. Furnish and field-install spring-charged motor kits in the indicated four main circuit breakers in outdoor Switchgear "M1 / M2" in accordance with Square D requirements.*
- iv. Remove the four existing key interlocks with Switchgear "M1 / M2" and patch openings.*
- v. Furnish and field-install indoor ATO Cabinet (with integral programmable logic controller, human-machine interface, uninterruptable power supply). Install ATO Cabinet in Emergency Switchboard Room of the Main Building in accordance with Square D requirements.*
- vi. Provide conduit and wiring between ATO Cabinet and each of the four spring-charged motor kits in accordance with Square D requirements. Provide programming for circuit breaker sequencing as described in Detail 6 of Sheet E404.*
- vii. Provide conduit and wiring between ATO Cabinet and the existing Generac PM-SC generator controller located in the same room as directed by both Square D and Generac.*

- viii. Provide 3/4" C with Modbus TCP/IP signal cable to BAS cabinet for alarm monitoring.
- ix. Add conduit and Modbus RS-485 connection between the existing Generac PM-SC and the building automation system (BAS). Provide mapping and programming of Generac data into BAS.
- x. Other indicated revisions related to the items described above.

3. SHEET E403 – NEW ONE-LINE DIAGRAM – ATO Provisions

a. Revised drawing

- i. Revised to show that the ATO function in existing Switchboard "MSG-L" and "MSG-R" and tie circuit breaker were removed as part of demolition work shown on Sheet E402.
- ii. Added conduit and wiring from the meter in the cabinet of the 300 kW UPS to BAS.

4. SHEET E404 – GROUNDING DIAGRAMS AND MISCELLANEOUS ELECTRICAL DETAILS – ATO Provisions

a. Revised Drawing


- i. Revised the sheet title to be "Grounding Diagrams and Miscellaneous Electrical Details".
- ii. Add Detail 6 (SEQUENCING OF MOTORIZED CIRCUIT BREAKERS IN SWITCHGEAR "M1" AND "M2").

TY SHEETS – NO WORK

END OF ASI #42



ISSUED BY THE ARCHITECT


Signature

Steve J. Patmon, AIA

10/24/24

Printed Name and Title

ASI No. 42 –ATO Provisions (updated)

Project: Anzalduas U.S. Land Port of Entry
Project No. 190559
Date: 10/17/2024

The information provided herein is intended to supplement and/or clarify the Contract Documents without a change in the Contract Sum or Contract Time.

This supplemental instruction includes **a 2 page narrative, zero attachments and 4 revised drawing sheets**. All other provisions of the Construction Documents remain unchanged.



10/17/2024

Description

Electrical

1. Sheet E003 – Electrical Site Plan Power (see attached revised sheet)
 - a. Detail 2: Added location information related to the installation of an ATO Cabinet and Remote Load Bank Control Panel. Both are to be installed in the Emergency Switchboard Room of the Main Building. The ATO Cabinet shall be installed in the space now occupied by to-be-demolished Switchboard "EPS".
 - b. Detail 2: Conduit between the outdoor Switchgear "M1 / M2" and the indoor ATO Cabinet has been added.
2. Sheet E402 – One-Line Diagram – New Switchboard (see attached revised sheet)
 - a. General: In response to RFI 140 (1/2/2024), automatic throwover (ATO) functions are being removed in existing Switchboards "MSB-L" and "MSB-R" to avoid creation of a parallel path of the grounded conductor ("neutral"). These ATO functions need to be added back into the system within new Switchgear "M1 / M2". Revisions to this sheet direct Contractor to changes necessary to allow ATO functions to be field-installed into new outdoor Switchgear "M1 / M2" and within the adjacent Emergency Switchboard Room of the Main Building.
 - b. Hatched the ATO function in existing Switchboard "MSG-L" and "MSG-R" and tie circuit breaker to be deleted as described in RFI 140 (1/2/2024).
 - c. Furnish and field-install spring-charged motor kits in the indicated four main circuit breakers in outdoor Switchgear "M1 / M2" in accordance with Square D requirements.
 - d. Remove the four existing key interlocks with Switchgear "M1 / M2" and patch openings.
 - e. Furnish and field-install indoor ATO Cabinet (with integral programmable logic controller, human-machine interface, uninterruptable power supply). Install ATO Cabinet in Emergency Switchboard Room of the Main Building in accordance with Square D requirements.
 - f. Provide conduit and wiring between ATO Cabinet and each of the four spring-charged motor kits in accordance with Square D requirements. Provide programming for circuit breaker sequencing as described in Detail 6 of Sheet E404.
 - g. Provide conduit and wiring between ATO Cabinet and the existing Generac PM-SC generator controller located in the same room as directed by both Square D and Generac.
 - h. Provide 3/4" C with Modbus TCP/IP signal cable to BAS cabinet for alarm monitoring.

-
- i. Add conduit and Modbus RS-485 connection between the existing Generac PM-SC and the building automation system (BAS). Provide mapping and programming of Generac data into BAS.
 - j. Other indicated revisions related to the items described, above.
 3. Sheet E403 – New One-Line Diagram (see attached revised sheet)
 - a. Revised to show that the ATO function in existing Switchboard “MSG-L” and “MSG-R” and tie circuit breaker were removed as part of demolition work shown on Sheet E402.
 - b. Added conduit and wiring from the meter in the cabinet of the 300 kW UPS to BAS.
 4. Sheet E404 – Grounding Diagrams and Miscellaneous Electrical Details (see attached revised sheet)
 - a. Revised the sheet title to be “Grounding Diagrams and Miscellaneous Electrical Details”.
 - b. Add Detail 6 (SEQUENCING OF MOTORIZED CIRCUIT BREAKERS IN SWITCHGEAR “M1” AND “M2”).

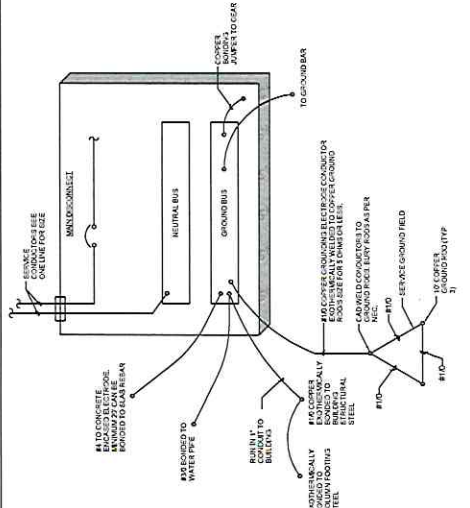


CERTIFICATIONS
KEEP IN MIND
DATE: 11/17/2024

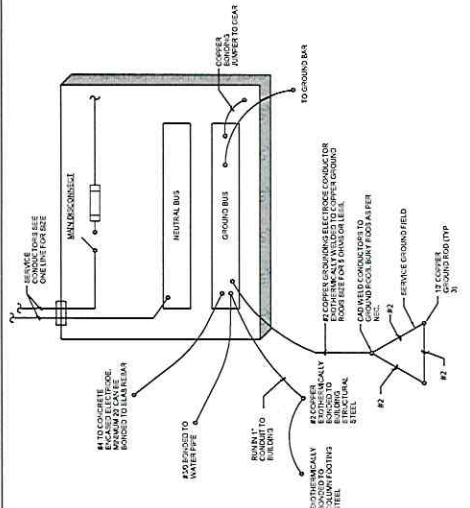
MARK	DATE	DESCRIPTION
1		ISSUED FOR CONSTRUCTION
2		
3		
4		
5		
6		

REV	NO.	DATE	DESCRIPTION
1	1	11/17/2024	ISSUED FOR CONSTRUCTION
2	2		
3	3		
4	4		
5	5		
6	6		

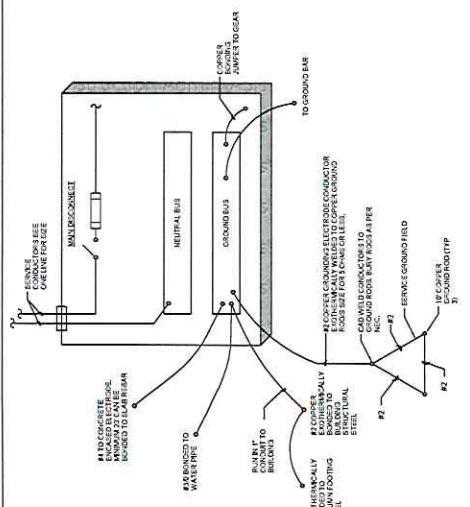
NO.	DATE	DESCRIPTION
1		ISSUED FOR CONSTRUCTION
2		
3		
4		
5		
6		



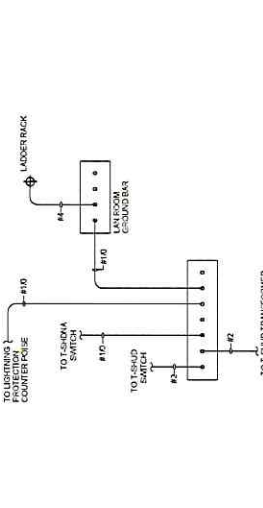
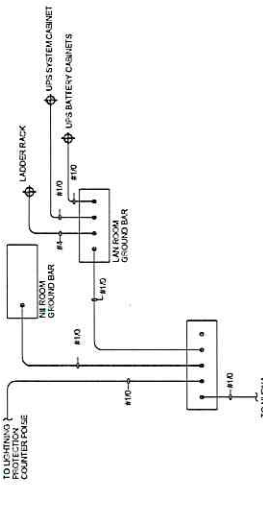
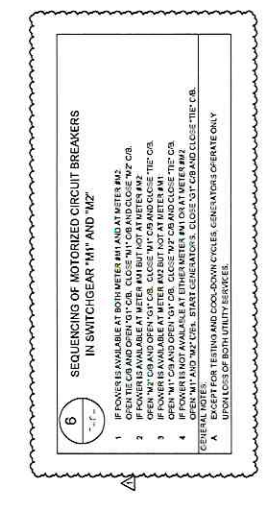
1 SHDMA SWITCH
GROUNDING AND BONDING DETAIL
SCALE: N.T.S.
EQU



2 T-SHUT SWITCH
GROUNDING AND BONDING DETAIL
SCALE: N.T.S.
EQU



3 PANEL NHDNA
GROUNDING AND BONDING DETAIL
SCALE: N.T.S.
EQU



4 OUTBOUND GROUND DETAIL
SCALE: N.T.S.
EQU

5 INBOUND GROUND DETAIL
SCALE: N.T.S.
EQU

CLEARY ZIMMERMANN ENGINEERS
Firm No. FJ331 | Clear@zimmmann.com

Anzalduas International Bridge

STANDARDIZED RECOMMENDATION FORM

CITY COMMISSION _____
UTILITY BOARD _____
ANZALDUAS BRIDGE _____ X _____

AGENDA ITEM 7
DATE SUBMITTED 01/30/25
MEETING DATE 02/10/25

1. **Agenda Item:** Consideration and Approval for Change Order No. 8 for the Anzalduas Bridge Infrastructure Improvements project.

2. **Party Making Request:** Juan Olaguibel, ACM/Superintendent of Bridges

3. **Nature of Request: (Brief Overview) Attachments:** X Yes ___ No

4. **Policy Implication:** _____

5. **Budgeted:** ___ Yes ___ No ___ N/A

Bid Amount: _____

Budgeted Amount: _____

Under Budget: _____

Over Budget: _____

Amount Remaining: _____

If over budget how will it be paid for: _____

6. **Alternate option/costs:** _____

7. **Routing:**

<u>NAME/TITLE</u>	<u>INITIAL</u>	<u>DATE</u>	<u>CONCURRENCE</u>	
a) _____			Yes ___	No ___
b) _____			Yes ___	No ___
c) _____			Yes ___	No ___

8. **Staff's Recommendation:** _____

Advisory Board: ___ Approved ___ Disapproved ___ None

City Attorney: ___ Approved ___ Disapproved ___ None

Manager's Recommendation: ___ Approved ___ Disapproved ___ None



**ENGINEERING DEPARTMENT
MEMORANDUM**

To: Isaac J. Tawil, City Manager

From: Eduardo Mendoza, P.E., P.T.O.E., City Engineer

Date: February 10, 2025

**Subject: Change Order No. 8 – Anzalduas Bridge Infrastructure Improvements
Project No.: 07-22-C29-802**

Goal

Consideration and approval of Change Order No. 8 for the Anzalduas Bridge Infrastructure Improvements project.

Explanation

This item expands the current project scope related to U.S. Customs and Border Protection (CBP) initiated changes at the Inbound (Northbound) inspection area. The work includes modifications to electrical, data, and finish for Non-intrusive Inspection (NII) infrastructure. The Anzalduas International Bridge Department will recover funds from CBP.

A brief contract summary is presented below.

	Amount	Working Days
Original Contract	\$ 81,861,364.52	320
Previous Change Orders	\$ 2,027,657.52	80
Change Order No. 8	\$ 86,711.00	0
Revised Contract	\$ 83,975,733.04	400

Detailed supporting documentation is attached for your review.

Options

- 1) Approve Change Order No. 8
- 2) Disapprove Change Order No. 8 and renegotiate fee

Recommendation

RRP Consulting Engineers, LLC., and staff recommend approval of Change Order No. 8 in the amount of **\$86,711** with **no additional working days** for a revised contract amount of **\$83,975,733.04** and unchanged contract time of **400-working days**.



PCO #049

D. Wilson Construction
 PO Box 3455
 McAllen, Texas 78502
 Phone: (956) 686-9573
 Fax: (956) 686-3270

Project: 22-192 - McAllen Anzalduas LPOE Expansion
 5911 S Stewart Rd
 Mission, Texas 78572-1500

Prime Contract Potential Change Order #049: ASI 35 - Analyst Romm MODS

TO:	City of McAllen PO Box 220 McAllen, Texas 78505	FROM:	D Wilson Construction Company PO Box 3455 McAllen, Texas 78502
PCO NUMBER/REVISION:	049 / 0	CONTRACT:	22-192 - McAllen Anzalduas LPOE Expansion
REQUEST RECEIVED FROM:		CREATED BY:	William Northcutt (D Wilson Construction Company)
STATUS:	Pending - In Review	CREATED DATE:	10/22/2024
REFERENCE:		PRIME CONTRACT CHANGE ORDER:	None
EXECUTED:	No	SIGNED CHANGE ORDER RECEIVED DATE:	
SCHEDULE IMPACT:	20 days	TOTAL AMOUNT:	\$86,711.00

POTENTIAL CHANGE ORDER TITLE: ASI 35 - Analyst Romm MODS

CHANGE REASON: Design Development

POTENTIAL CHANGE ORDER DESCRIPTION: *(The Contract Is Changed As Follows)*

CE #155 - Analyst Operations Rm. 249 - NII

Revised drawings for MEP and room layout for NII equipment in association with Rm. 249 - Analyst Operations Rm.

Price is valid for 15 days from initial receipt of PCO.

An expected 20 working days added to the contract schedule, from date of approved Change Order. Additional time for unforeseen issues encountered will be requested through a time impact analysis per contract.

ATTACHMENTS:

[CPR #25R.pdf](#) , [ANZ FCP - Analyst Operations Station POW DAT - 10.07.2024.pdf](#) , [20241010092019230.pdf](#)

#	Budget Code	Description	Amount
1	124.16-100.S	ASI 35 - Analyst Room 249 Electrical & Data	\$78,757.00
2	124.09-900.S	ASI 35 - Analyst Room 249 - Tape/Float (HALF)	\$825.00
3	124.09-100.S	ASI 35 - Analyst Room 249 - Drwall Demo & Replace (HALF)	\$3,000.00
4	BF-997.OVH	DWCC - Profit & Overhead	\$4,129.00
Grand Total:			\$86,711.00

RRP Consulting Engineers
 5408 N. 10th. Street
 McAllen, Texas 78504

City of McAllen
 PO Box 220
 McAllen, Texas 78505

D Wilson Construction Company
 PO Box 3455
 McAllen, Texas 78502

SIGNATURE _____ DATE _____ SIGNATURE _____ DATE _____ SIGNATURE _____ DATE _____

ASI 35 - Electrical Updates (SJPA 08-21-24) - S2 Comments

09-16-2024.pdf Markup Summary

Sticky Note (14)



Subject: Sticky Note
Page Label: 7
Author: sparol
Date: 9/16/2024 1:07:15 PM
Status:
Color: ■
Layer:
Space:

(9) Image Analyst Workstations

(1) quad power and (1) quad data outlet at all (9) Image Analyst workstations.
(2) Data lines per data outlet go to NII LAN Rm 231.
(2) Data lines per data outlet go to LAN/TelCo Rm 236.



Subject: Sticky Note
Page Label: 7
Author: sparol
Date: 9/16/2024 4:53:16 PM
Status:
Color: ■
Layer:
Space:

MEP Operator Station #1

(1) quad power outlet, (1) quad data outlet, and (3) HDMI at each MEP Operator workstation.
Each station will have (1) OpCon cable. Need brush plate space to support, whether alongside (3) HDMI or separate.
All data lines will go to NII LAN Rm 231.



Subject: Sticky Note
Page Label: 7
Author: sparol
Date: 9/16/2024 1:20:14 PM
Status:
Color: ■
Layer:
Space:

Printer Station

(1) duplex power and (1) quad data outlet for each of the (2) printers.
(2) data lines per outlet go to NII LAN Rm 231.
(2) data lines per outlet go to LAN/TelCo Rm 236.



Subject: Sticky Note
Page Label: 7
Author: sparol
Date: 10/1/2024 4:15:00 PM
Status:
Color: ■
Layer:
Space:

MEP Operator Wall-Mounted Monitor #2

(1) duplex power outlet, (1) duplex data outlet, and (1) HDMI.
Outlets should be concealed behind monitor.
All cables/data lines to NII LAN Rm 231.



Subject: Sticky Note
Page Label: 7
Author: sparol
Date: 9/16/2024 1:19:17 PM
Status:
Color: ■
Layer:
Space:

(6) Situational Wall Monitors (2X3)

(1) duplex power outlet, (1) duplex data outlet and (1) HDMI for all (6) wall-mounted monitors.
(1) data line per data outlet to NII LAN Rm 231 and (1) data line per data outlet to LAN/Telco RM 236.
HDMI for first (4) monitors looking from left to right go to NII LAN Rm 231.
HDMI for last (2) monitors looking from left to right go to LAN Tel/Co Rm 236.
All outlets should be concealed behind monitors.



Subject: Sticky Note
Page Label: 7
Author: sparol
Date: 9/16/2024 4:45:04 PM
Status:
Color: ■
Layer:
Space:

HDMI From NII Control Center Rm 249

All HDMI from Rm 249 should be labeled, coiled and hung with enough slack (15'-20') to reach and install in any rack position.



Subject: Sticky Note
Page Label: 7
Author: sparol
Date: 9/16/2024 1:12:34 PM
Status:
Color: ■
Layer:
Space:

RPM Operator

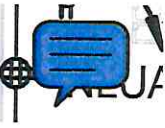
(1) quad power, (1) quad data, and (1) HDMI
All cables/data lines to LAN/TelCo Rm 236.



Subject: Sticky Note
Page Label: 7
Author: sparol
Date: 9/16/2024 4:53:05 PM
Status:
Color: ■
Layer:
Space:

MEP Operator Station #2

(1) quad power outlet, (1) quad data outlet, and (3) HDMI at each MEP Operator workstation.
Each station will have (1) OpCon cable. Need brush plate space to support, whether alongside (3) HDMI or separate.
All data lines will go to NII LAN Rm 231.



Subject: Sticky Note
Page Label: 7
Author: sparol
Date: 9/16/2024 1:07:26 PM
Status:
Color: ■
Layer:
Space:

Supervisor Corner

(2) quad power and (2) quad data outlets in supervisor corner.
All data lines go to LAN TelCo Rm 236.



Subject: Sticky Note
Page Label: 7
Author: sparol
Date: 9/16/2024 1:14:54 PM
Status:
Color: ■
Layer:
Space:

MEP Server Rack #1

Requires (2) L5-30R outlets on independent circuits.
These can either be wall mounted or dropped from the ceiling, roughly 5-6' from the floor.



Subject: Sticky Note
Page Label: 7
Author: sparol
Date: 9/16/2024 1:14:47 PM
Status:
Color: ■
Layer:
Space:

MEP Server Rack #2

Requires (2) L5-30R outlets on independent circuits.
These can either be wall mounted or dropped from the ceiling, roughly 5-6' from the floor.



Subject: Sticky Note
Page Label: 7
Author: sparol
Date: 9/16/2024 1:15:10 PM
Status:
Color: ■
Layer:
Space:

CertScan Server Rack

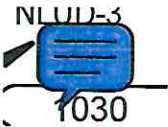
Requires (2) L6-30R outlets on independent circuits.
These can either be wall mounted or dropped from the ceiling, roughly 5-6' from the floor.



Subject: Sticky Note
Page Label: 7
Author: sparol
Date: 9/16/2024 4:53:12 PM
Status:
Color: ■
Layer:
Space:

MEP Operator Wall-Mounted Monitor #1

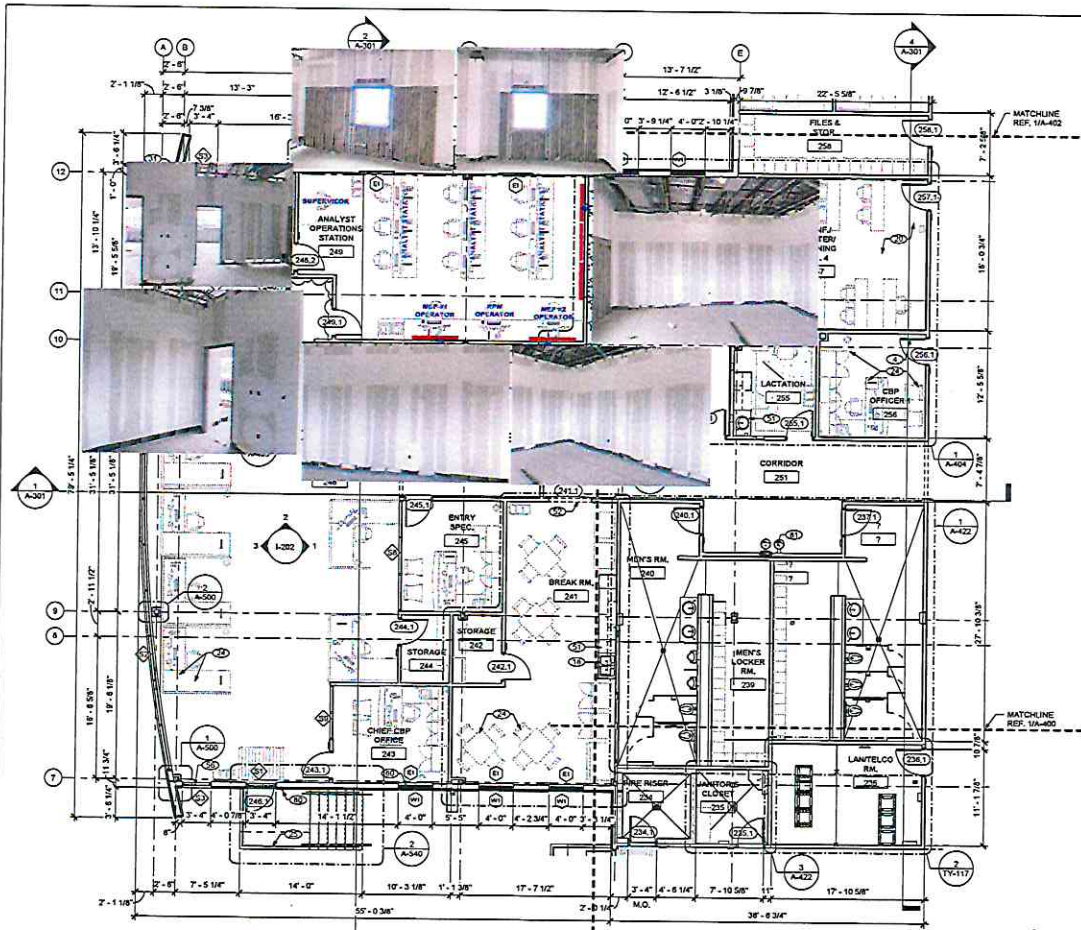
(1) duplex power outlet, (1) duplex data outlet, and (1) HDMI.
Outlets should be concealed behind monitor.
All cables/data lines to NII LAN Rm 231.



Subject: Sticky Note
Page Label: 7
Author: sparol
Date: 9/16/2024 4:52:34 PM
Status:
Color: ■
Layer:
Space:

Originally Planned Equipment

Request install of (1) rack frame as intended in original plan.
All Cat 6 from NII Control Center Rm 249 should be labeled and terminated into a Cat 6 patch panel in this rack.

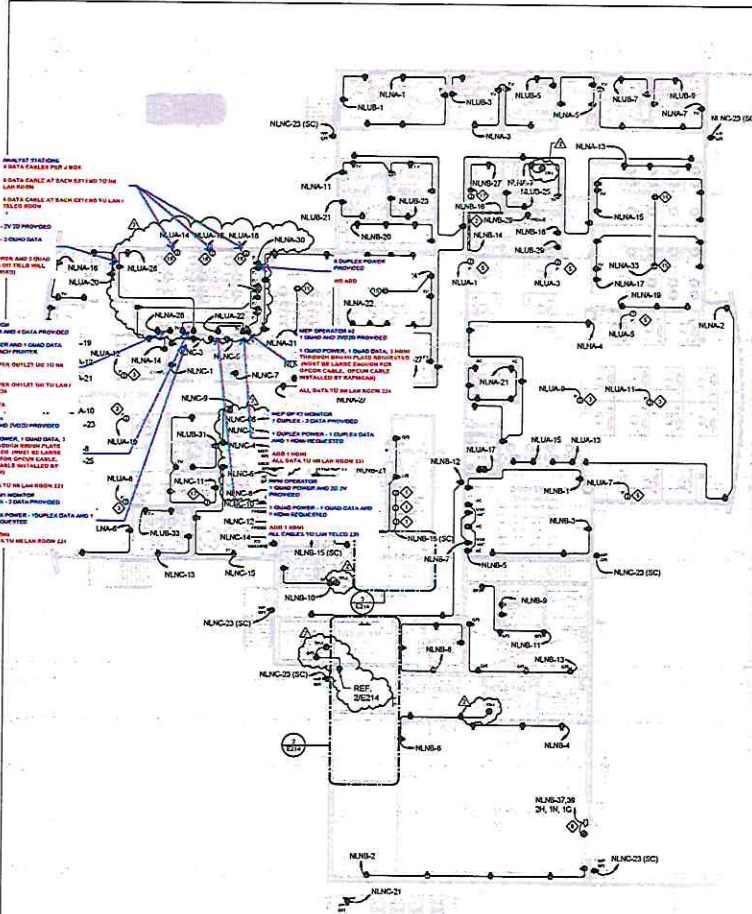


1 ENLARGED FLOOR PLAN - IMPORT BUILDING
 3/16" = 1'-0"

PROPERTY OF THE UNITED STATES GOVERNMENT - FOR OFFICIAL USE ONLY. Do not remove this notice. Properly destroy documents when no longer needed.

SHEET KEYNOTES	
NO.	NOTE
4	DOOR (TYP) REF. SCHED. AND SPEC.
7	CONC. SPLASH BLOCK (TYP) REF. SPEC.
18	SINK (TYP) REF. REF.
20	FLOOR FINISH (TYP) REF. FINISH SCHED. AND SPEC.
24	FURNITURE/EQUIPMENT (TYP) REF. FURNITURE PLANS, SCHED. AND SPEC.
28	1-1/2" DIA. STL PIPE GUARDRAIL (TYP)(PTD) REF. SPEC.
31	STEEL COLUMN EXPOSED COLUMN CONDITIONS SHALL BE (PTD)(TYP) REF. STRUCT. DWGS.
51	COUNTERTOP W/IRAGE CABINETS REF. INTERIOR ELEVATIONS AND SPEC.
52	CASED OPENING (TYP) REF. DOOR SCHED.
56	METAL FRAMED GLAZING SYSTEM (TYP) REF. WINDOW SCHED. AND SPEC.
66	METAL FRAMED WINDOW (TYP) REF. WINDOW SCHED. AND SPEC.
79	RECESSED FIRE EXTINGUISHER CABINET (TYP) REF. LIFE SAFETY DWGS. AND SPEC.
80	DISPENSE (TYP) REF. SIGNAGE DWGS. AND SPEC.
81	DRINKING FOUNTAIN REF. MEP AND SPEC.

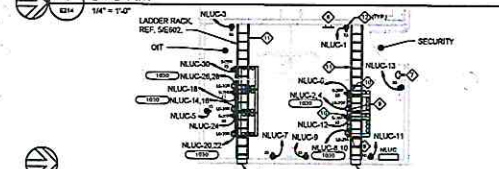
General Services Administration Anzalduas U.S. Land Port of Entry Full Commercial Project Mission, Texas	
DATE: 02/26/24	
MARK	DATE DESCRIPTION
17	REVISION: 04/11
SCALE: 3/16" = 1'-0" 	
PROJECT: ANZALDUAS PTY-18 DAP - FULL COMMERCIAL PROJECT PROJECT: FULL COMMERCIAL PROJECT SHEET: ENLARGED FLOOR PLAN - IMPORT BUILDING SHEET NO: A-401	



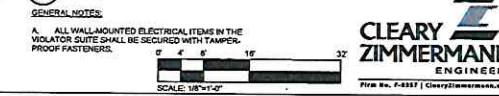
1 INBOUND COMMERCIAL FACILITY POWER PLAN
3/22" = 1'-0"

- KEY NOTES:**
- ◆ FURNISH VALVE CONNECTION.
 - ◆ PROVIDE PLUG MOLD 6" ABOVE COUNTER, LENGTH OF COUNTER, ALL RECEPTACLE ARE GPI.
 - ◆ FURNITURE POWER WHIP FROM FLOOR BOX.
 - ◆ PROVIDE NAMEPLATE READING: "SERVED FROM GPI CIRCUIT BREAKER".
 - ◆ FURNITURE POWER WHIP FROM WALL.
 - ◆ GROUND BAR, (REF. 1E601)
 - ◆ PROVIDE EPD SWITCH SAFETY TECH (DIN PART NO. SC22090-01) (700 HE EQUIPMENT) AND COVER SAFETY TECHNOLOGY # 78399 PART NO. ST1-30000, WITH CUSTOM SHIELDLINE, FACTORY LABEL READING, "FIRE DEPT. USE ONLY", REF. 6E602.
 - ◆ ROLL UP DOOR POWER.
 - ◆ 208 VAC J-BOXES SHALL BE MOUNTED TO UNLUSTRIT ABOVE THE EQUIPMENT RACKS AND BE PROVIDED WITH A SEVEN-FOOT "SO TYPE" CORD WITH A NEMA 5-20R AND 14-FOOT E END.
 - ◆ 120 VAC J-BOXES SHALL BE MOUNTED TO UNLUSTRIT ABOVE THE EQUIPMENT RACKS AND BE PROVIDED WITH A SEVEN-FOOT "SO TYPE" CORD WITH A NEMA 5-20R AND 14-FOOT E END.
 - ◆ LADDER RACK, (REF. 5A602).
 - ◆ ISOLATED GROUND RECEPTACLES SH BE PROVIDED WITH EQUAL COORDINATE LOCATION WITH LADDER RACK LOCATION.
 - ◆ PROVIDE THREE FIRE RATED PATHWAY, E2 PATH #20P4452 OR EQUAL, COORDINATE LOCATION WITH LADDER RACK LOCATION.
 - ◆ PROVIDE ONE FIRE RATED PATHWAY, E2 PATH #20P4452 OR EQUAL, COORDINATE LOCATION WITH LADDER RACK LOCATION WITH ARCHITECT, REF. E312 FOR COMMUNICATIONS INFORMATION.
 - ◆ PROVIDE DUAL, REC. FOR ELECTROCHROMIC GLASS EQUIPMENT (COMPUTER, P.O.E. SWITCH, AND FIREWALL). COORDINATE RECEPTACLE LOCATION WITH E-GLASS EQUIPMENT MANUFACTURER'S REQUIREMENTS PRIOR TO ROUGH-IN. 2P12, #12XND, 1/2" TO SPARE 20A, 1P CIRCUIT BREAKER INDICATED.
 - ◆ PROVIDE CONNECTION FOR ELECTROCHROMIC GLASS EQUIPMENT (CONTROL PANEL), COORDINATE LOCATION WITH E-GLASS EQUIPMENT MANUFACTURER'S REQUIREMENTS PRIOR TO ROUGH-IN. 2P12, #12XND, 1/2" TO EXISTING CIRCUIT BREAKER INDICATED.
 - ◆ PROVIDE RECESSED J-BOX WITH BLANK COVERPLATE AND 1/2" LIQUIDTIGHT FLEXIBLE METAL CONDUIT WHEN OF SUITABLE LENGTH, LOCATE ADJACENT TO OWNER-PROVIDED LOW WALL. COORDINATE WALL LOCATION WITH OWNER. OWNERS SHALL PROVIDE RECEPTACLES AND FINAL TERMINATIONS. REF. 1A312 FOR DATA.

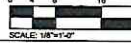
2 INBOUND COMMERCIAL FACILITY ENLARGED ELEC & UPS RM



3 INBOUND COMMERCIAL FACILITY ENLARGED TELCO RM



- GENERAL NOTES:**
- A. ALL WALL-MOUNTED ELECTRICAL ITEMS IN THE INDICATED SUITE SHALL BE SECURED WITH TAMPER-PROOF FASTENERS.



CLEARY ZIMMERMANN ENGINEERS
Firm No. 2-8937 | clearyzimmernan.com

GSA
S J F
General Services Administration
Anzalduas
U.S. Land Port of Entry
Full Commercial Project
Mission, Texas

DATE: 08/20/2024

MARK	DATE	DESCRIPTION
1		ISSUE FOR BIDDING
2		ISSUE FOR BIDDING

REVISION	DATE	DESCRIPTION
1		ISSUE FOR BIDDING
2		ISSUE FOR BIDDING

PROJECT	ANZALDUAS FULL COMMERCIAL PROJECT
CLIENT	U.S. LAND PORT OF ENTRY
LOCATION	MISSION, TEXAS 78470
DATE	08/20/2024
SCALE	AS SHOWN
DESIGNER	CLEARY ZIMMERMANN ENGINEERS
CHECKED	SAVED CONNECTION
APPROVED	ISSUED FOR CONSTRUCTION
PROJECT NO.	2-8937
DATE	08/20/2024
SCALE	AS SHOWN
PROJECT	ANZALDUAS FULL COMMERCIAL PROJECT
CLIENT	U.S. LAND PORT OF ENTRY
LOCATION	MISSION, TEXAS 78470
DATE	08/20/2024
SCALE	AS SHOWN
DESIGNER	CLEARY ZIMMERMANN ENGINEERS
CHECKED	SAVED CONNECTION
APPROVED	ISSUED FOR CONSTRUCTION
PROJECT NO.	2-8937
DATE	08/20/2024
SCALE	AS SHOWN
PROJECT	ANZALDUAS FULL COMMERCIAL PROJECT
CLIENT	U.S. LAND PORT OF ENTRY
LOCATION	MISSION, TEXAS 78470
DATE	08/20/2024
SCALE	AS SHOWN
DESIGNER	CLEARY ZIMMERMANN ENGINEERS
CHECKED	SAVED CONNECTION
APPROVED	ISSUED FOR CONSTRUCTION
PROJECT NO.	2-8937
DATE	08/20/2024
SCALE	AS SHOWN



METRO ELECTRIC, INC.

TECL # 17140

MAIN OFFICE
1901 INDUSTRIAL DRIVE
McALLEN, TX 78504-4015
(956) 686-2323

BRANCH OFFICE
5255 COMMERCIAL DRIVE
BROWNSVILLE, TX 78521-5260
(956) 831-7801

HARLINGEN, TX 78550
(956) 421-2600

WWW.METROELECTRIC-RGV.COM

December 11, 2024

D. Wilson Construction Co.
PO Box 3455
McAllen, TX 78501

Attn: William Northcutt
Ref: Anzalduas LPOE Expansion – McAllen, TX
(Metro CPR #25R)

Please add \$78,757.00 to our base contract amount for the following changes.

SCOPE OF WORK

All electrical, data, and HDMI work along with any panel modifications needed to accommodate the work called for in Room 249 per ASI 35 is included. Opcon cabling is not included.

We request 10 additional business days be added to the construction schedule for this work. Upon receipt of your written change order, we will proceed with ordering the material and this work.

This pricing assumes that existing sheetrock on interior walls of room 249 will be removed prior to this work being performed. Sheetrock cutting, removal, and reinstallation are not included. Other work on this ASI not directly related to Room 249 and that was previously priced with other RFI's is not included.

This proposal is valid for 10 days.
Should you have any questions, please advise.

Sincerely,
Metro Electric, Inc.


Matthew P. Diehl
Estimator

File C.O. #03567
CC: Sergio Lerma
Cesar Cantu
Armando Cid

COMMERCIAL • INDUSTRIAL

Regulated by The Texas Department of Licensing and Regulation, P.O. Box 12157, Austin, Texas 78711,
1-800-803-9202, 512-463-6599; website: www.tdlr.texas.gov/complaints



METRO ELECTRIC, INC.

TECL # 17140

MAIN OFFICE

1901 INDUSTRIAL DRIVE
McALLEN, TX 78504-4015
(956) 686-2323

BRANCH OFFICE

5255 COMMERCIAL DRIVE
BROWNSVILLE, TX 78521-5260
(956) 831-7801

HARLINGEN, TX 78550
(956) 421-2600

WWW.METROELECTRIC-RGV.COM

January 21, 2025

D. Wilson Construction Co.
PO Box 3455
McAllen, TX 78501

Attn: William Northcutt
Ref: Anzalduas LPOE Expansion – McAllen, TX
(Metro CPR #25R) Breakdown of CPR #25R

Please add \$78,757.00 to our base contract amount for the following changes.

SCOPE OF WORK

All electrical, data, and HDMI work along with any panel modifications needed to accommodate the work called for in Room 249 per ASI 35 is included. Opcon cabling is not included.

Materials		\$ 14,700.95
Labor		\$ 30,007.26
Equipment		\$ -
Safety Coordination		\$ 900.22
Sub Materials		\$ 19,889.10
Sub Labor		\$ 13,259.40
Total		\$ 78,756.93

We request 10 additional business days be added to the construction schedule for this work. Upon receipt of your written change order, we will proceed with ordering the material and this work.

COMMERCIAL • INDUSTRIAL

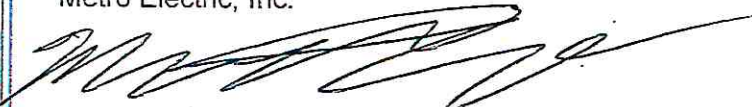
Regulated by The Texas Department of Licensing and Regulation, P.O. Box 12157, Austin, Texas 78711,
1-800-803-9202, 512-463-6599; website: www.tdlr.texas.gov/complaints

METRO ELECTRIC, INC.

This pricing assumes that existing sheetrock on interior walls of room 249 will be removed prior to this work being performed. Sheetrock cutting, removal, and reinstallation are not included. Other work on this ASI not directly related to Room 249 and that was previously priced with other RFI's is not included.

This proposal is valid for 10 days.
Should you have any questions, please advise.

Sincerely,
Metro Electric, Inc.



Matthew P. Diehl
Estimator

File C.O. #03567

COMMERCIAL • INDUSTRIAL

Change Price Request Cost Analysis

PROJECT: Anzalduas LPOE Expansion - McAllen, TX
 CONTRACTOR: D. Wilson Construction

DESCRIPTION OF CHANGE:

All electrical, data, and HDMI work called for in Room 249 per ASI 35.

Metro Electric, Inc - CPR# 25R, Page 1 of 3

Description	Quan. Reqd.	Material Cost	Unit	Material Total	Labor Total
				\$ -	\$ -
#12 CU WIRE	1,875.00	\$ 222.10	M	\$ 416.44	\$ 1,040.98
#10 CU WIRE	2,284.00	\$ 357.20	M	\$ 815.84	\$ 1,479.39
10/2 SO CABLE SET	4.00	\$ 54.47	E	\$ 217.88	\$ 286.23
10/3 SO CABLE SET	1.00	\$ 57.99	E	\$ 57.99	\$ 72.79
3/4 EMT CONDUIT	950.00	\$ 238.41	C	\$ 2,264.90	\$ 2,930.16
3/4 EMT CONN	75.00	\$ 219.88	C	\$ 164.91	\$ 1,387.97
3/4 EMT COUP	105.00	\$ 246.26	C	\$ 258.57	\$ 906.81
3/4 EMT CLAMP	105.00	\$ 242.76	C	\$ 254.90	\$ 291.47
1 1/4 EMT CONDUIT	340.00	\$ 565.62	C	\$ 1,923.11	\$ 1,950.56
1 1/4 EMT 90D ELBOW	34.00	\$ 1,020.14	C	\$ 346.85	\$ 1,006.74
1 1/4 EMT CONN	34.00	\$ 747.59	C	\$ 254.18	\$ 1,258.43
1 1/4 EMT COUP	34.00	\$ 677.23	C	\$ 230.26	\$ 629.21
1 1/4 EMT CLAMP	68.00	\$ 670.85	C	\$ 456.18	\$ 251.69
1 1/4 SLIP ON BUSHING	34.00	\$ 32.60	C	\$ 11.08	\$ 524.34
WIRE NUTS	90.00	\$ 196.01	M	\$ 17.64	\$ 499.67
SGB BOX SUPPORT	56.00	\$ 660.88	C	\$ 370.09	\$ 310.91
4S BOX	27.00	\$ 614.47	C	\$ 165.91	\$ 666.23
4S 1G MUDRING	8.00	\$ 504.50	C	\$ 40.36	\$ 123.38
4S 2G MUDRING	14.00	\$ 665.54	C	\$ 93.18	\$ 215.91
4S RAISED COVER	5.00	\$ 408.70	C	\$ 20.44	\$ 30.84
				\$ -	\$ -

Change Price Request Cost Analysis

PROJECT: Anzalduas LPOE Expansion - McAllen, TX
 CONTRACTOR: D. Wilson Construction

DESCRIPTION OF CHANGE:

All electrical, data, and HDMI work called for in Room 249 per ASI 35.

Metro Electric, Inc - CPR# 25R, Page 2 of 3

Description	Quan. Reqd.	Material Cost	Unit	Material Total	Labor Total
				\$ -	\$ -
4 11/16 BOX	34.00	\$ 957.86	C	\$ 325.67	\$ 838.95
4 11/16 1G MUDRING	34.00	\$ 682.99	C	\$ 232.22	\$ 524.34
DPLX 5-20R	35.00	\$ 26.24	E	\$ 918.40	\$ 971.58
DPLX 5-20R GFCI	1.00	\$ 41.82	E	\$ 41.82	\$ 27.76
L5-30 OUTLET	4.00	\$ 77.60	E	\$ 310.40	\$ 148.05
L6-30 OUTLET	1.00	\$ 84.60	E	\$ 84.60	\$ 37.01
L5-30 CORD CAP	4.00	\$ 43.44	E	\$ 173.76	\$ 222.08
L6-30 CORD CAP	1.00	\$ 50.35	E	\$ 50.35	\$ 55.52
2G DPLX RCPT PLATE	14.00	\$ 491.63	C	\$ 68.83	\$ 155.45
1G DPLX RCPT PLATE	8.00	\$ 345.09	C	\$ 27.61	\$ 74.03
1/2 LT FURNITURE OUTLET	3.00	\$ 11.92	E	\$ 35.76	\$ 462.66
1 LT FURNITURE OUTLET	3.00	\$ 25.63	E	\$ 76.89	\$ 555.19
GROUND SCREW/PIGTAIL	27.00	\$ 84.73	C	\$ 22.88	\$ 149.90
DEVICE LABELS	27.00	\$ 0.10	E	\$ 2.70	\$ 33.31
FIELD MODIFY PANELS	4.00	\$ -	X	\$ -	\$ 1,233.75
DEMO 20/1P/120 CB	1.00	\$ -	X	\$ -	\$ 61.69
ADD 20/1P/120 CB	5.00	\$ 63.15	E	\$ 315.75	\$ 308.44
ADD 20/1P/120 GFCI CB	2.00	\$ 204.35	E	\$ 408.70	\$ 123.38
ADD 30/1P/120 CB	1.00	\$ 91.03	E	\$ 91.03	\$ 61.69
				\$ -	\$ -
				\$ -	\$ -

Change Price Request Cost Analysis

PROJECT: Anzalduas LPOE Expansion - McAllen, TX
 CONTRACTOR: D. Wilson Construction

DESCRIPTION OF CHANGE:

RFI 256
 Receptacle and extend circuitry for Trap Primer 120v.

Description	Quan. Reqd.	Material Cost	Unit	Material Total	Sub Contractor Total	Labor Total
				\$ -	\$ -	\$ -
ADD 30/2P/240V CB	1.00	\$ 192.70	E	\$ 192.70	\$ -	\$ 123.38
DEMO EXISTING WORK	1.00	\$ -	X	\$ -	\$ -	\$ 1,974.00
				\$ -	\$ -	\$ -
QUOTE FOR DATA CABLING	1.00			\$ -	\$ 31,570.00	\$ -
				\$ -	\$ -	\$ -
				\$ -	\$ -	\$ -
SUMMARY OF CPR 25				\$ -	\$ -	\$ -
TOTALS FROM PAGE 1	1.00	\$ 8,380.70		\$ 8,380.70	\$ -	\$ 15,863.68
TOTALS FROM PAGE 2	1.00	\$ 3,187.36		\$ 3,187.36	\$ -	\$ 6,044.76
SAFETY COORDINATION	1.00			\$ -	\$ -	\$ 720.17
				\$ -	\$ -	\$ -
				\$ -	\$ -	\$ -
				\$ -	\$ -	\$ -
				\$ -	\$ -	\$ -
				\$ -	\$ -	\$ -
				\$ -	\$ -	\$ -
				\$ -	\$ -	\$ -
Subtotals				\$ 11,760.76	\$ 31,570.00	\$ 24,725.99

Sales Tax

Subtotal Material	\$ 11,760.76
Plus 25% Material	\$ 2,940.19
Total Material	\$ 14,700.95
Subtotal Sub-Contractor Work	\$ 31,570.00
Plus 5% Labor	\$ 1,578.50
Total Sub-Contractor Work	\$ 33,148.50
Subtotal Equipment and Tax	\$ -
Plus 15% Equipment	\$ -
Total Equipment	\$ -
Subtotal Labor	\$ 24,725.99
Plus 25% Labor	\$ 6,181.50
Total Labor	\$ 30,907.49
Subtotal Material, Labor & Equipment	\$ 78,756.93



Ph/Fax (956) 685-5329

P. O. Box 4347
McAllen, TX 78502

ESTIMATE

PANDUIT[®] BELDEN

AXIS[®] COMMUNICATIONS **COMMSCOPE[®]**

Account Name Metro Electric
Bill To 1901 Industrial Drive
McAllen, TX 78504
United States

Created Date 12/5/2024
Quote Number 00001013
Opportunity Name Metro. GSA Anzalduas LPOE Full Commercial

Contact Name Matthew Diehl

Quantity	Product	Sales Price	Total Price
1.00	Technical Services	\$31,570.00	\$31,570.00

<p>Notes</p> <p>ASI 35</p> <p>SCOPE OF WORK:</p> <p>1) Provide and install data cables (82) per ASI 35 Summary.</p> <p>MATERIALS: \$15,498 LABOR: \$10,332 TOTAL: \$25,830</p> <p>2) Provide and install HDMI cables (13) per ASI 35 Summary.</p> <p>MATERIALS: \$2,184 LABOR: \$1,456 TOTAL: \$3,640</p> <p>3) Provide and install HDMI cables with brush plate space (6) per ASI 35 Summary.</p> <p>MATERIALS: \$1,260 LABOR: \$840 TOTAL: \$2,100</p> <p>REMARKS:</p> <p>a) Rough ins, conduits, and backboxes by others. b) Sales tax not included.</p>	<p>Subtotal \$31,570.00</p> <p>Total Price \$31,570.00</p> <p>Discount 0.00%</p> <p>Tax \$0.00</p> <p>Shipping and Handling \$0.00</p> <p>Grand Total \$31,570.00</p>
---	---

FOB MCALLEN, TX
Abryl Rodriguez, RCDD
abrylr@supernovastore.com
www.supernovastore.com

NETWORK DIVISION
*Structured Cabling. Telephone Systems. Audio/Video.
Intecom/Paging Systems. Information Technology. Design
Services*

Customer Acceptance

ARCHITECTURAL SUPPLEMENTAL INSTRUCTION

PROJECT NAME: *Anzalduas Full Commercial Project*

PROJECT NO: *20-0002-000*

DATE: August 21, 2024

ASI NO.: *ASI No. 35*

This architectural supplemental instruction shall be carried out in accordance with the following supplemental instructions issued in accordance with the Contract Documents without change in Contract Sum or Contract Time. Proceeding with the Work in accordance with these instructions indicates your acknowledgment that there will be no change in the Contract Sum or Contract Time. All other provisions of the documents remain unchanged.

CHANGES TO DOCUMENTS ARE AS FOLLOWS:

General: The documents contained within this Architectural Supplemental Instruction (ASI) summarize the modifications required for the following Scope of Work (SOW). The work has been bubbled and identified as Delta Mark 35. The respective sheet revision notes are noted as ASI #35.

1. Electrical Updates

- a. Several keyed notes removed.*
- b. Several keyed notes added.*
- c. Revised power conduit layout at bi-parting gate.*
- d. Deleted power at north gate.*
- e. Revised communications conduit layout at bi-parting gate and north gate.*
- f. Added receptacle and circuit for equipment items at Breakroom 241.*
- g. Revised power and data layout for furniture/equipment items at Analyst Operations Rm. 249.*
- h. Added connections to trap primers.*
- i. Updates to NLNA, NLNC, and NLUA panels (added and revised circuits).*

SPECIFICATION – NO WORK

GENERAL – NO WORK

CIVIL – NO WORK

ARCHITECTURAL (A) SHEETS – NO WORK

STRUCTURAL (S) SHEETS – NO WORK

PLUMBING (P) SHEETS – NO WORK

ELECTRICAL (E) SHEETS

1. Sheet E003 – ELECTRICAL SITE PLAN - POWER - *Electrical Updates*
 - a. Deleted Keyed Note 31 thru 35.
 - b. Revised bi-parting gate power conduit layout.
 - c. Revised bi-parting gate controller identification numbers.
 - d. Deleted North gate power.
2. Sheet E004 – ELECTRICAL SITE PLAN - COMM - *Electrical Updates*
 - a. Added Keyed Notes 5 thru 9 inclusive.
 - b. Revised bi-parting gate communications conduit layout.
 - c. Revised North gate communications conduit layout
3. Sheet E214 – INBOUND COMMERCIAL FACILITY POWER PLAN - *Electrical Updates*
 - a. Revised receptacle layout and circuiting for workstations, printers, and monitors in Analyst Operations Room 249.
 - b. Added Keyed Note 18.
 - c. Added receptacle and circuit for vending machine and coffee pot, and switch for disposal in Breakroom 241.
 - d. Added connections to trap primers in indicated areas.
4. Sheet E312 – INBOUND COMMERCIAL FACILITY SPECIAL SYSTEMS PLAN - *Electrical Updates*
 - a. Revised data drop layout for workstations, printers, and monitors in Analyst Operations Room 249.
 - b. Added Keyed Note 7.
5. Sheet E505 – ELECTRICAL PANEL SCHEDULES - *Electrical Updates*
 - a. In Panels NLNA and NLNC, added and revised circuits in previously described areas.
6. Sheet E506 – ELECTRICAL PANEL SCHEDULES - *Electrical Updates*
 - a. In Panel NLUA, added and revised circuits in previously described areas.

TY SECURITY (TY) SHEETS – NO WORK


Anzalduas Full Commercial Project
ASI No. 35
August 21, 2024
Page 3 of 3



END OF ASI #35



ISSUED BY THE ARCHITECT


Signature

Steve J. Patmon, AIA

08/21/24

Printed Name and Title

ASI No. 35

Project: Anzalduas U.S. Land Port of Entry
Project No. 190559
Date: 8/20/2024

The information provided herein is intended to supplement and/or clarify the Contract Documents without a change in the Contract Sum or Contract Time.

This supplemental instruction includes a **1 page narrative, zero attachment(s) and six (6) revised drawing sheets**. All other provisions of the Construction Documents remain unchanged.



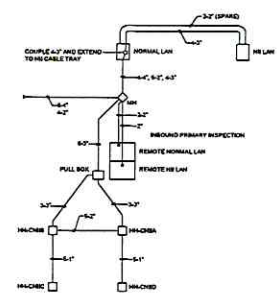
08/20/2024

Description

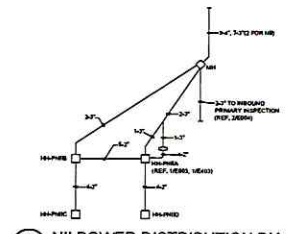
Electrical

1. Sheet E003 – ELECTRICAL SITE PLAN - POWER
 - a. Deleted Keyed Note 31 thru 35.
 - b. Revised bi-parting gate power conduit layout.
 - c. Revised bi-parting gate controller identification numbers.
 - d. Deleted North gate power.
2. Sheet E004 – ELECTRICAL SITE PLAN - COMM
 - a. Added Keyed Notes 5 thru 9 inclusive.
 - b. Revised bi-parting gate communications conduit layout.
 - c. Revised North gate communications conduit layout
3. Sheet E214 – INBOUND COMMERCIAL FACILITY POWER PLAN
 - a. Revised power layout for workstations, printers, and monitors in Analyst Operations Room 249.
 - b. Added Keyed Note 18.
 - c. Added receptacle and circuit for vending machine and coffee pot, and switch for disposal in Breakroom 241.
 - d. Added connections to trap primers in indicated areas.
4. Sheet E312 – INBOUND COMMERCIAL FACILITY SPECIAL SYSTEMS PLAN
 - a. Revised data layout for workstations, printers, and monitors in Analyst Operations Room 249.
 - b. Added Keyed Note 7.
5. Sheet E505 – ELECTRICAL PANEL SCHEDULES
 - a. In Panels NLNA and NLNC, added and revised circuits in previously described areas.
6. Sheet E506 – ELECTRICAL PANEL SCHEDULES
 - a. In Panel NLUA, added and revised circuits in previously described areas.

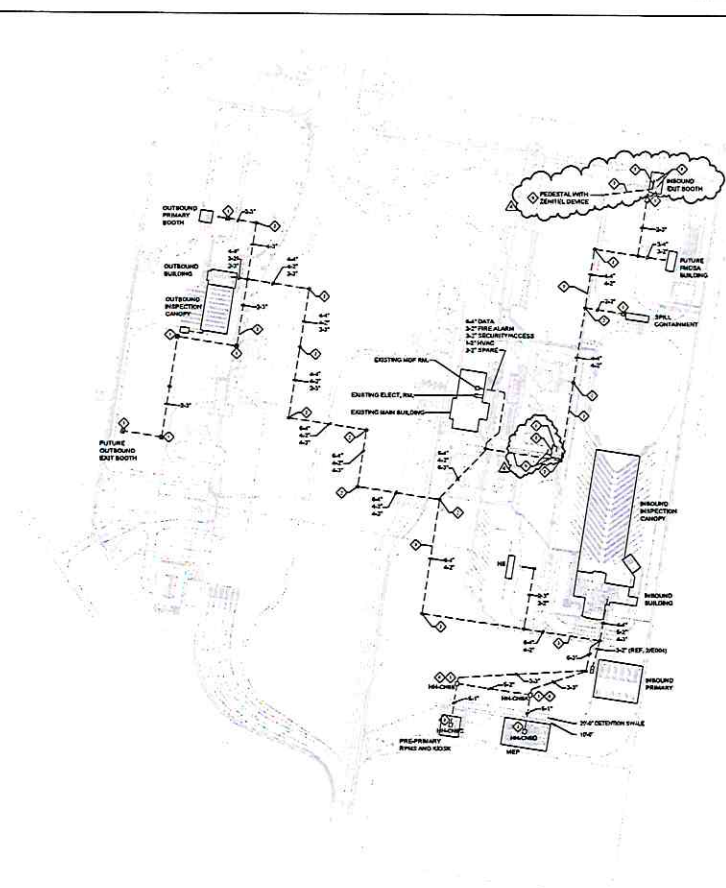
- KEY NOTES:**
- ◇ IN GRADE PULL BOX SEE DETAIL.
 - ◇ COMMUNICATIONS MANHOLE (TYP.).
 - ◇ LOCATE EACH RESPECTIVE DUCT BANK WITHIN 6" OF FROM CURB.
 - ◇ COORDINATE PULLBOX LOCATION TO BE 1" NORTH OF DETENTION SWALE.
 - ◇ 3" PVC CONTROL DUCT BANKS FOR U.S. USE, STRANDED COPPER.
 - ◇ 1" C WITH MANUFACTURER'S COMMUNICATION CONNECTIONS, COORDINATE TERMINATION POINT WITH DATA BACK IN RESPECTIVE BOOTHS AND CONDUCTOR IDENTIFICATION WITH ZENITEL EQUIPMENT.
 - ◇ FIELD COORDINATE WITH OWNER FOR LOCATION OF ZENITEL PEDESTAL.
 - ◇ FIELD COORDINATE WITH OWNER FOR LOCATION OF ZENITEL PEDESTAL.



2 NII COMM. DISTRIBUTION DIAGRAM
E004 N.T.S.



3 NII POWER DISTRIBUTION DIAGRAM
E004 N.T.S.



SCALE: 1"=150'-0"

1 ELECTRICAL SITE PLAN COMM
E004 1"=150'-0"

GSA
S J F
GENERAL SERVICES ADMINISTRATION
ANZALDIUS
U.S. LAND PORT OF ENTRY
MISSION, TEXAS

MARK DATE DESCRIPTION
 1 10/20/2011 REVISED
 2 10/20/2011 REVISED
 3 10/20/2011 REVISED
 4 10/20/2011 REVISED

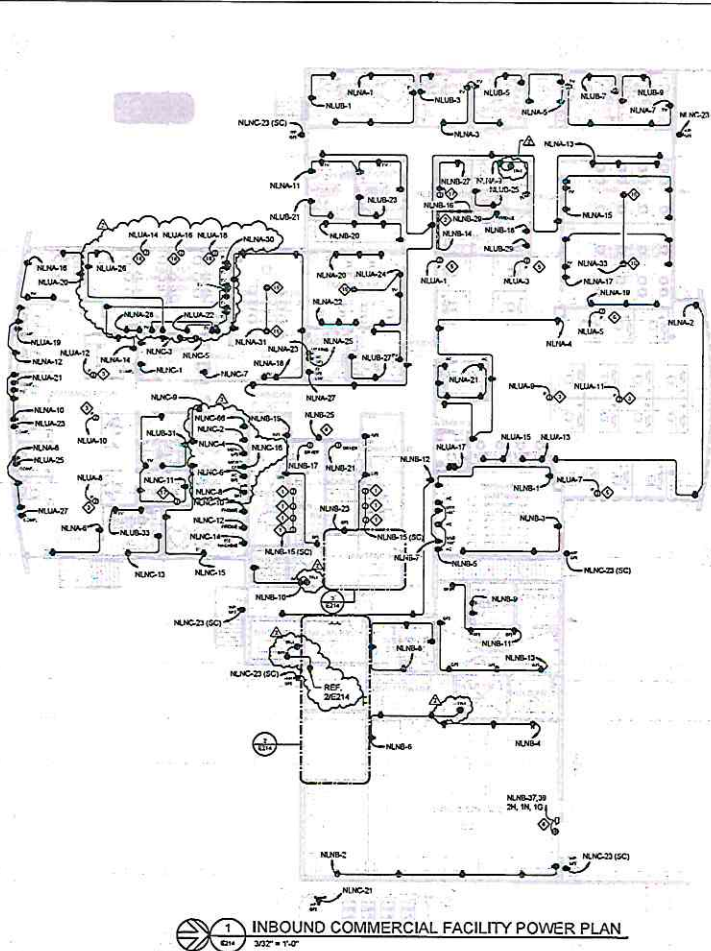
REVISIONS

PROJECT: ANZALDIUS PVS/VEE SUPP
 PROJECT: FULL COMMERCIAL PROJECT
 CONTRACT NO.: 48000003
 DRAWING NO.: E004
 DRAWING TITLE: ELECTRICAL SITE PLAN COMM

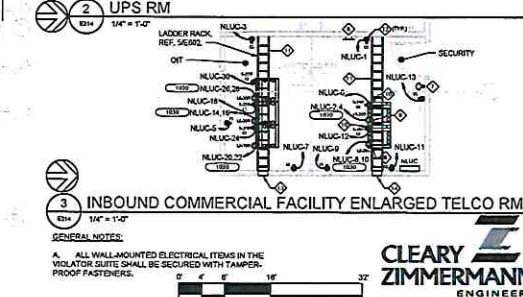
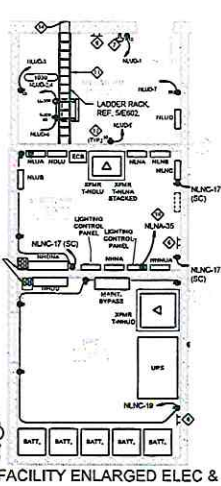
DATE: 10/20/2011
 DRAWN BY: [Name]
 CHECKED BY: [Name]
 APPROVED BY: [Name]

PROPERTY OF THE UNITED STATES GOVERNMENT - FOR OFFICIAL USE ONLY. Do not remove this notice. Properly destroy documents when no longer needed.

CLEARY ZIMMERMANN ENGINEERS
 Firm No. F-8987 | ClearyZimmermann.com



- REVISED NOTES:**
- FLUSH VALVE CONNECTION.
 - PROVIDE PLUG MOLD 6" ABOVE COUNTER LENGTH OF COUNTER. ALL RECEPTACLE ARE GFI.
 - FURNITURE POWER WHP FROM FLOOR BOX.
 - PROVIDE NAMEPLATE READING: "SERVED FROM GFI CIRCUIT BREAKER".
 - FURNITURE POWER WHP FROM WALL.
 - GROUND BAR. (REF. 1A501.)
 - PROVIDE EPD SWITCH SAFETY TECHNOLOGY INTERNATIONAL (STI) PART NO. S32209P-2B (TWO 400V CONTACT BLOCKS) AND COVER. SAFETY TECHNOLOGY INTERNATIONAL (STI) PART NO. ST-H3000V, WITH CUSTOM, SINGLELINE, FACTORY LABEL READING. FIRE DEPT. USE ONLY. REF. 50002.
 - ROLL UP DOOR POWER.
 - 208 VAC JBOXES SHALL BE MOUNTED TO UN-STRUT ABOVE THE EQUIPMENT RACKS AND BE PROVIDED WITH A SEVEN-FOOT "50 TYPE" CORD WITH A NEMA L6-30R RECEPTACLE AT THE END. FEEDER TYPE 1002.
 - 120 VAC JBOXES SHALL BE MOUNTED TO UN-STRUT ABOVE THE EQUIPMENT RACKS AND BE PROVIDED WITH A SEVEN-FOOT "50 TYPE" CORD WITH A NEMA 5-20R RECEPTACLE AT THE END.
 - LADDER RACK. (REF. 56902).
 - ISOLATED GROUND RECEPTACLES SHALL BE PROVIDED AN ADDITIONAL GROUNDING CONDUCTOR.
 - PROVIDE THREE FIRE RATED PATHWAYS, E2 PATH #22DPA452 OR EQUAL. COORDINATE LOCATION WITH LADDER RACK LOCATION.
 - PROVIDE ONE FIRE RATED PATHWAY, E2 PATH #22DPA452 OR EQUAL. COORDINATE LOCATION WITH LADDER RACK LOCATION.
 - PROVIDE DUAL SERVICE FLOORBOX. COORDINATE EXACT LOCATION WITH ARCHITECT. REF. E312 FOR COMMUNICATIONS INFORMATIONAL.
 - PROVIDE GFI, REC. FOR ELECTROCHROMIC GLASS EQUIPMENT (COMPUTER, P.O.E. SWITCH, AND FIREWALL). COORDINATE RECEPTACLE LOCATION WITH E-GLASS EQUIPMENT MANUFACTURER'S REQUIREMENTS PRIOR TO ROUGH-IN. 3P12, #125ND, 1/2" C TO EXISTING CIRCUIT INDICATED.
 - PROVIDE CONNECTION FOR ELECTROCHROMIC GLASS EQUIPMENT (CONTROL PANEL). COORDINATE LOCATION WITH E-GLASS EQUIPMENT MANUFACTURER'S REQUIREMENTS PRIOR TO ROUGH-IN. 3P12, #125ND, 1/2" C TO EXISTING CIRCUIT INDICATED.
 - PROVIDE RECESSED JBOX WITH BLANK COVERPLATE AND 1/2" LIQUIDTIGHT FLEXIBLE METAL CONDUIT WHP OF SUFFICIENT LENGTH. LOCATE ADJACENT TO OWNER-PROVIDED LOW WALL. COORDINATE WALL LOCATION WITH OWNER. OWNER SHALL PROVIDE RECEPTACLES AND FINAL TERMINATIONS. REF. 1A512 FOR DATA.



GSA

S J T

General Services Administration
Anzalduas
U.S. Land Port of Entry
Full Commercial Project
Mission, Texas

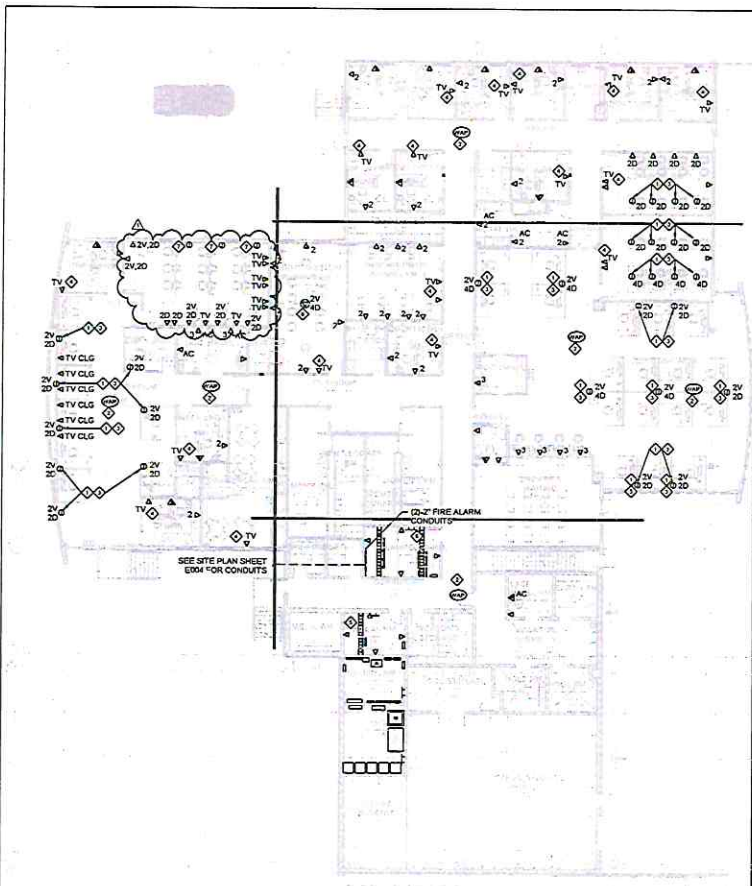
TELECOMMUNICATIONS
ELECTRICAL

MARK	DATE	DESCRIPTION
1	08/01/14	ISSUED FOR PERMIT
2	08/01/14	ISSUED FOR PERMIT

NO.	DATE	DESCRIPTION
1	08/01/14	ISSUED FOR PERMIT
2	08/01/14	ISSUED FOR PERMIT

PROJECT: INBOUND COMMERCIAL FACILITY
 CLIENT: U.S. LAND PORT OF ENTRY
 ADDRESS: 1015 S. STEWART RD
 MISSION, TEXAS 79701
 DRAWING NO: E214
 SCALE: 1/8" = 1'-0"

CLEARY ZIMMERMANN ENGINEERS
 Firm No. F-9357 | ClearyZimmern.com



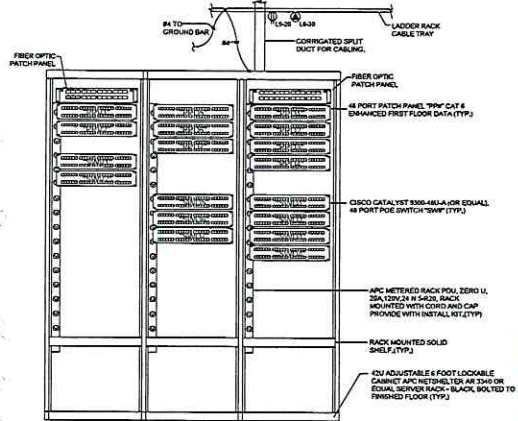
INBOUND COMMERCIAL FACILITY SPECIAL SYSTEMS PLAN
 3/32" = 1'-0"

GENERAL NOTES:

A. ALL WALL-MOUNTED ELECTRICAL ITEMS IN THE VIOLATOR SUITE SHALL BE SECURED WITH TAMPER-PROOF FASTENERS.

KEYED NOTES:

- ◇ 1 1/4" FOR DATA.
- ◇ CEILING MOUNTED WIRELESS ACCESS POINT.
- ◇ FLOOR MOUNTED PEDESTAL J-BOX FOR POWERED FURNITURE. PROVIDE CAT 6 CABLES AS SHOWN. PROVIDE 1 VOICE & 4 CABLES.
- ◇ COORDINATE ROUGH-IN HEIGHT WITH ARCHITECTURAL ELEVATION.
- ◇ GROUND BAR.
- ◇ REFER TO SHEET E214 FOR LOCATIONS OF TWO-COMPARTMENT PEDESTAL.
- ◇ PROVIDE RECESSED J-BOX WITH BLANK COVERPLATE FOR DATA. PROVIDE 1" LIQUIDTIGHT FLEXIBLE METAL CONDUIT W/SP-WT PULL TAPE OF SUITABLE LENGTH. LOCATE ADJACENT TO OWNER-PROVIDED LOW WALL. COORDINATE WALL LOCATION WITH OWNER. OWNER SHALL PROVIDE DEVICE TELEPHONE AND DATA PORTS AND FINAL TERMINATIONS.



2 DATA RACK ELEVATION
 E312 NOT TO SCALE



CLEARY ZIMMERMANN ENGINEERS
 Firm No. E-312 | ClearyZimm.com

General Services Administration
Anzalduas
U.S. Land Port of Entry
Full Commercial Project
Mission, Texas

E312

NO.	DATE	DESCRIPTION
1	10/20/2024	ISSUED FOR PERMITS

PROJECT: INBOUND COMMERCIAL FACILITY SPECIAL SYSTEMS PLAN

CLIENT: U.S. LAND PORT OF ENTRY

LOCATION: MISSION, TEXAS

DATE: 10/20/2024

SCALE: 3/32" = 1'-0"

PROJECT NO.: E312

DESIGNER: CLEARY ZIMMERMANN ENGINEERS

CHECKED BY: [Signature]

DATE: 10/20/2024

PROPERTY OF THE UNITED STATES GOVERNMENT - FOR OFFICIAL USE ONLY. Do not remove this notice. Properly destroy documents when no longer needed.

PANEL NHUPS
LOCATION: PRIMARY CANOPY
MOUNTING: SURFACE
ENCLOSURE: NEMA 3R
BKR MFD: BOLT-ON
BREAKERS: SERIES RATED, 75 DEGREE TERMINALS

PANEL NNHUA
LOCATION: ROOM
MOUNTING: SURFACE
ENCLOSURE: NEMA 1
BKR MFD: BOLT-ON
BREAKERS: SERIES RATED, 75 DEGREE TERMINALS

PANEL NDLU
LOCATION: ROOM
MOUNTING: SURFACE
ENCLOSURE: NEMA 1
BKR MFD: BOLT-ON
BREAKERS: SERIES RATED, 75 DEGREE TERMINALS

PANEL NLUA
LOCATION: ROOM
MOUNTING: SURFACE
ENCLOSURE: NEMA 1
BKR MFD: BOLT-ON
BREAKERS: SERIES RATED, 75 DEGREE TERMINALS

PANEL NLUPS
LOCATION: PRIMARY CANOPY LAM ROOM
MOUNTING: SURFACE
ENCLOSURE: NEMA 1
BKR MFD: BOLT-ON
BREAKERS: SERIES RATED, 75 DEGREE TERMINALS

GSA
S J M
General Services Administration
Anzaldus Port of Entry
U.S. Land Port of Entry
Full Commercial Project
Mission, Texas



REVISION TABLE
NO. 1
NO. 2
NO. 3

REVISION TABLE
NO. 4
NO. 5
NO. 6

REVISION TABLE
NO. 7
NO. 8
NO. 9



File No. F-997 | ClearyZimmermann.com

PROPERTY OF THE UNITED STATES GOVERNMENT - FOR OFFICIAL USE ONLY. Do not remove this notice. Properly destroy documents when no longer needed.

Anzalduas International Bridge

STANDARDIZED RECOMMENDATION FORM

CITY COMMISSION _____
UTILITY BOARD _____
ANZALDUAS BRIDGE X

AGENDA ITEM 8
DATE SUBMITTED 01/30/25
MEETING DATE 02/10/25

1. **Agenda Item:** Chairman's, City Manager's, Superintendent of Bridges', Customs and Border Protection Report.

2. **Party Making Request:** Juan Olaguibel, ACM/Superintendent of Bridges

3. **Nature of Request: (Brief Overview) Attachments:** Yes X No

4. **Policy Implication:** _____

5. **Budgeted:** Yes No N/A

Bid Amount: _____ Budgeted Amount: _____
Under Budget: _____ Over Budget: _____
Amount Remaining: _____

If over budget how will it be paid for: _____

6. **Alternate option/costs:** _____


7. **Routing:**

<u>NAME/TITLE</u>	<u>INITIAL</u>	<u>DATE</u>	<u>CONCURRENCE</u>	
a) _____			<u> </u> Yes	<u> </u> No
b) _____			<u> </u> Yes	<u> </u> No
c) _____			<u> </u> Yes	<u> </u> No

8. **Staff's Recommendation:** Report Only

Advisory Board: Approved Disapproved None

City Attorney: Approved Disapproved None

Manager's Recommendation:  Approved Disapproved None

Anzalduas International Bridge

STANDARDIZED RECOMMENDATION FORM

CITY COMMISSION _____
UTILITY BOARD _____
ANZALDUAS BRIDGE X

AGENDA ITEM 9
DATE SUBMITTED 01/30/25
MEETING DATE 02/10/25

1. Agenda Item: Engineering Report
2. Party Making Request: Juan Olaguibel, ACM/Superintendent of Bridges
3. Nature of Request: (Brief Overview) Attachments: Yes X No

4. Policy Implication: _____

5. Budgeted: Yes No N/A

Bid Amount: _____ Budgeted Amount: _____
Under Budget: _____ Over Budget: _____
Amount Remaining: _____

If over budget how will it be paid for: _____

6. Alternate option/costs: _____


7. Routing:

<u>NAME/TITLE</u>	<u>INITIAL</u>	<u>DATE</u>	<u>CONCURRENCE</u>	
a) _____			<u> </u> Yes	<u> </u> No
b) _____			<u> </u> Yes	<u> </u> No
c) _____			<u> </u> Yes	<u> </u> No

8. Staff's Recommendation: Report Only

Advisory Board: Approved Disapproved None

City Attorney: Approved Disapproved None

Manager's Recommendation:  Approved Disapproved None

Anzalduas International Bridge

STANDARDIZED RECOMMENDATION FORM

CITY COMMISSION _____
UTILITY BOARD _____
ANZALDUAS BRIDGE X

AGENDA ITEM 10
DATE SUBMITTED 01/30/25
MEETING DATE 02/10/25

1. **Agenda Item:** Consultation with City Attorney regarding economic development (T.G.C.551.087).

2. **Party Making Request:** Juan Olaguibel, ACM/Superintendent of Bridges

3. **Nature of Request: (Brief Overview) Attachments:** Yes X No

4. **Policy Implication:** _____

5. **Budgeted:** Yes No N/A

Bid Amount: _____ Budgeted Amount: _____
Under Budget: _____ Over Budget: _____
Amount Remaining: _____

If over budget how will it be paid for: _____

6. **Alternate option/costs:** _____

7. **Routing:**

<u>NAME/TITLE</u>	<u>INITIAL</u>	<u>DATE</u>	<u>CONCURRENCE</u>
a) _____			<u> </u> Yes <u> </u> No
b) _____			<u> </u> Yes <u> </u> No
c) _____			<u> </u> Yes <u> </u> No

8. **Staff's Recommendation:** Seek Direction

Advisory Board: Approved Disapproved None

City Attorney: Approved Disapproved None

Manager's Recommendation: Approved Disapproved None