



City of McAllen Crime Report

McAllen Police Department



Crime In McAllen 2012

Crime in McAllen 2012



McAllen Police Department

**Victor Rodriguez
Chief of Police**

**Lt. Joel Morales
Director
Information Systems Bureau**

**Sgt. Marco Castaneda
Crime Records Office**

**Irma L. Gutierrez
Crime Statistician**

Acknowledgements

This report was compiled from data submitted to the Crime Records Office by members of the McAllen Police Department and from data generated from calls for service. This report is modeled after the Texas Department of Public Safety Annual Crime in Texas report.



TABLE OF CONTENTS

Executive Summary from Chief of Police	7
Introduction of Uniform Crime Reporting	8
I. Chapter One: City of McAllen Crime Analysis	9
Crime In McAllen Table	10
Crime Trends and Analysis	11
UCR Crime Index	12
Annual Crime Trends Volume & Rate	13
McAllen Index Crime Clock	14
McAllen Crime Facts at a Glance	15
II. Chapter Two: Index Crime Analysis	16
Criminal Homicide-Murder	17
Volume & Rate	18
Analysis by Month & Day of the Week	19
Location of Crime & Time of Day	19
Victims, Age, Gender, Ethnicity	20
Offenders, Age, Gender, Ethnicity	21
Relationship/Circumstance /Type of Weapon Used	22
Forcible Rape	23
Volume & Rate	24
Victims, Age, Gender, Ethnicity	25
Offenders, Age, Gender, Ethnicity	26
Location of Crime/Relations to Victim/Offender	27
Robbery	28
Volume & Rate	29
Robbery Analysis	30
Property Losses	30
Property Losses by Monetary Value	30
Losses by Location	30
Persons Arrested	31
Weapons Used	31



TABLE OF CONTENTS

Aggravated Assault	32
Volume & Rate	33
Analysis	34
Weapon Used	34
Persons Arrested by Age Group	34
Burglary-Analysis	35
Volume & Rate	36
Analysis	37
Property Losses	37
By Location	37
Method of Entry	37
Persons Arrested	37
Larceny-Theft	38
Volume & Rate	39
Analysis	40
Monthly Property Loss Values	40
Property Stolen by Classification	40
Value of Stolen Property by Classification	40
Larceny Categories	41
Losses by Monetary Value Stolen/Recovered	41
Losses by Index Crime	41
Persons Arrested by Age	41
Motor Vehicle Theft	42
Volume & Rate	43
Analysis	44
Type of Vehicle Stolen	44
Persons Arrested by Age	44
Loss by Index Crime	44



TABLE OF CONTENTS

III. Chapter Three: Selected Non-Index Crimes	45
Categories	46
D.U.I Arrests	47
Monthly Arrestees	47
Persons Arrested by Age	47
Drug Abuse Arrests	48
Monthly Arrestees	48
Drug Type	48
Persons Arrested by Age & Gender	48
Drug Seizure	49
Drug Type & Quantity	49
Weapons Arrests	50
Monthly	50
Persons Arrested by Age Group	50
IV. Chapter Four: Family Violence	51
Analysis	52
Victim Category, Relationship	53
Family Violence Data	53
Type of Injury, Type of Offense, Type of Weapon	54
VI. Chapter Five: Calls for Service	55
Calls for Service by Description	56
Calls for Service by Hour	57
VII. Chapter Six: Law Enforcement Personnel	58
Commissioned Personnel/Civilian Personnel	59
Employee Ethnicity	59
VIII. Chapter Seven: McAllen Arrest Data	60
Appendices	65
Glossary of Terms	66



EXECUTIVE SUMMARY

The 2012 Annual Crime in McAllen offers a comprehensive analysis of crimes reported by the McAllen Police Department to the Federal Bureau of Investigations Uniform Crime Reporting (UCR) Program.

Crime in McAllen provides an overview of Uniform Crime Reporting (UCR) by the McAllen Police Department. This report examines offenses and total volume of UCR offenses that occurred in 2012.

The McAllen Police Department continues to use statistical resources by collecting, analyzing crime trends, carefully planning strategic operations, and administrative operational functions of the Department, that are used for preventing and suppressing criminal activities.

In addition, effective strategies helped our department pinpoint crime issues, which enabled us to address problems and to direct resources where needed the most.

In closing, I express my thanks to all the members of our community and members of the McAllen Police Department for their continued commitment and dedication to our community by continuing to display the principals of community oriented policing, as well as high visibility, strict enforcement of the law, professionalism.

Sincerely,

Victor Rodriguez
Chief of Police

INTRODUCTION

The City of McAllen Police Department participates in the Uniform Crime Reporting (UCR) Program. Uniform Crime Reporting is part of a nationwide, cooperative statistical effort administered by the Federal Bureau of Investigation.

History of UCR

In the 1920s, the International Association of Chiefs of Police (IACP) recognized the potential value in tracking national crime statistics. The Committee on Uniform Crime Records of the IACP developed and initiated this voluntary national data collection effort in 1930. Also, in 1930 the IACP was instrumental in gaining congressional approval which authorized the FBI to serve as the national clearinghouse for statistical information on crime. In June 1966, the National Sheriffs' Association (NSA) established a Committee on Uniform Crime Reporting to serve in an advisory capacity and to encourage sheriffs throughout the country to fully participate in the Program. Since 1930, through the UCR Program, the FBI has collected and compiled data to use in law enforcement administration, operation, management, and to indicate fluctuations in the level of crime in America.

To best depict total crime and to provide the most meaningful data to police administrators, the UCR Program collects data on known offenses and persons arrested by law enforcement agencies. The UCR Program does not record the findings of a court, coroner, jury, or the decision of a prosecutor.

UCR collects reports of seven index crimes. The crimes in this group are all serious, either by their nature or because of the frequency with which they occur. These seven index crimes are:

- ❖ Murder
- ❖ Forcible rape
- ❖ Robbery
- ❖ Aggravated Assaults
- ❖ Burglary
- ❖ Larceny (theft)
- ❖ Motor Vehicle Theft

Chapter One

City of McAllen Crime Analysis

CRIME IN McALLEN

Year	Pop	Index	Murder	Rape	Robbery	Aggravated Assault	Burglary	Larceny/Theft	Motor Vehicle Theft	Total
2011	132,741	Volume	4	27	72	143	511	5184	179	6120
		Rate	3.0	20.3	54.2	107.7	385.0	3905.3	134.8	4610.5
2012	135,667	Volume	1	3	56	106	503	4751	211	5631
		Rate	0.7	2.2	41.3	78.1	370.8	3502.0	155.5	4150.6

Summary Index Crimes 2012

The above chart lists the Crime Volume and Crime Rate for the City of McAllen. The “rate” reflects the number of crimes reported per 100,000 residents.

* Crime rates for 2011 are based on US Census 2010 population estimates.

CRIME TRENDS & ANALYSIS

- ❑ *Crime trends are analyzed using two methods, Crime Volume and Crime Rates.*
- ❑ *Crimes are also categorized according to: violent Crimes and Property Crimes.*

CRIME VOLUME:

Volume is the collective sum of the seven index crimes. By comparing the volume of index crimes from year to year; trends can be evaluated.

CRIME RATES:

Crime rates, on the other hand, are compiled to compensate for the changes in population and show the number of people affected by crime in a given population. Crime rates are usually expressed in the number of crimes per 100,000 residents.

VIOLENT CRIMES:

Involve the element of personal confrontation between the perpetrator and the victim. This category is comprised of Homicide, Forcible Rape, Robbery, and Aggravated Assault.

PROPERTY CRIMES:

Involve only the taking of money or property. This category is comprised of Burglary, Theft, and Motor Vehicle Theft.

McAllen Crime Volume –Table: 2				
Violent Crimes	Offense	2012	2011	% Change
	Murder	1	4	-75.0%
	Rape	3	27	-88.9%
	Robbery	56	72	-22.2%
	Aggravated Assault	106	143	-25.9%
	Violent Crime Total	166	246	-32.5%
Property Crimes	Burglary	503	511	-1.6%
	Theft	4751	5184	-8.4%
	Motor Vehicle Theft	211	179	17.9%
	Property Crime Total	5465	5874	-7.0%
	Index Crime Total	5631	6120	-8.0%

McAllen Crime Rate- Table: 3				
Violent Crimes	Offense	2012	2011	% Change
	Murder	0.7	3.0	-75.5%
	Rape	2.2	20.3	-89.1%
	Robbery	41.3	54.2	-23.9%
	Aggravated Assault	78.1	107.7	-27.5%
	Violent Crime Total	122.4	185.3	-34.0%
Property Crimes	Burglary	370.8	385	-3.7%
	Theft	3502.0	3905.3	-10.3%
	Motor Vehicle Theft	155.5	134.8	15.3%
	Property Crime Total	4028.2	4425.2	-9.0%
	Index Crime Total	4150.6	4610.5	-10.0%

- ◆ During the calendar year 2012, there were a total 5631 index offenses in the City of McAllen. The index decreased 8 percent when compared to 2011.
- ◆ During the calendar year 2012, McAllen's crime rate was 4150.6 crimes per 100,000 persons. The crime rate decreased 10 percent.

CRIME IN McALLEN

UCR INDEX CRIMES 2012

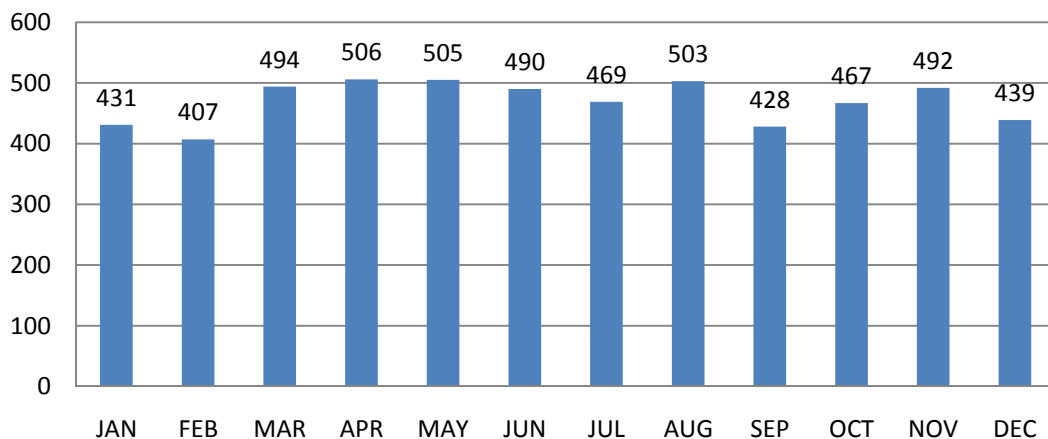
INDEX CRIME VOLUME

- ❖ The average monthly crime volume is 470.
- ❖ The highest monthly crime volume recorded was April with 506 offenses reported.
- ❖ 2012 experienced a 8% decrease compared to 2011.
- ❖ Murder experienced a 75% decrease in 2012 when compared to 2011.
- ❖ February was the lowest month with a crime volume of 407 offenses recorded.
- ❖ Reductions were recorded in six of the seven index crimes during 2012.

INDEX CRIME RATE

- ❖ The average monthly crime rate is 346.
- ❖ Rape experienced a 89.1 % crime rate decrease when compared to 2011.
- ❖ Motor Vehicle Theft rate experienced a increase of 15.3% compared to 2011.
- ❖ Robbery experienced a 23.9% rate decrease in 2012 when compared to 2011.
- ❖ Murder had the lowest crime rate for 2012 with 0.7.
- ❖ Violent Crimes recorded 34 percent rate reduction compared to 2011.

Index Crime by Month
Crime in McAllen 2012

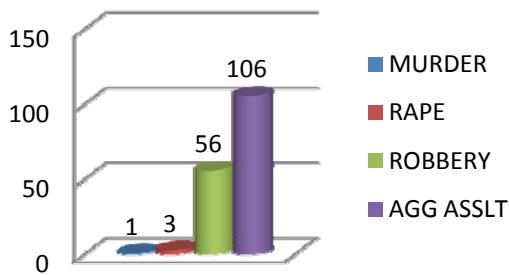


ANNUAL CRIME TRENDS

VIOLENT CRIMES

Violent Crimes involve the element of personal confrontation between the perpetrator and the victim. Because of nature, violent crimes are considered to be more serious than property crimes. An estimated 166 violent crimes occurred during 2012. A 32.5% decrease from 2011.

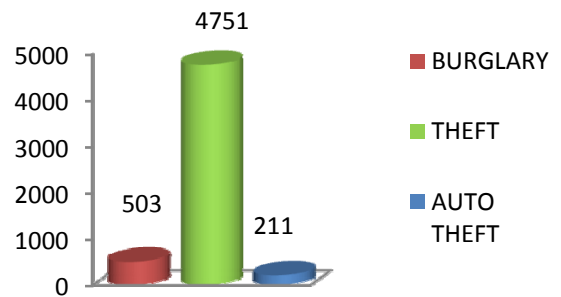
**Violent Crime by Offense
Crime In McAllen 2012
Figure:1**



PROPERTY CRIMES

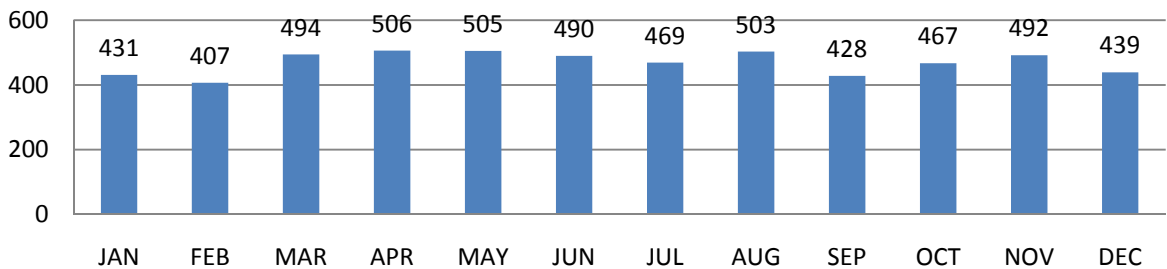
The number of property crimes occurring during 2012 was estimated at 5465. Property crimes decreased by 7 percent. Theft accounted for 87 percent compared to motor vehicle theft with 4 percent. The property crime rate was 4028.2 for 2012.

**Property Crimes by Offense
Crime In McAllen 2012
Figure:2**

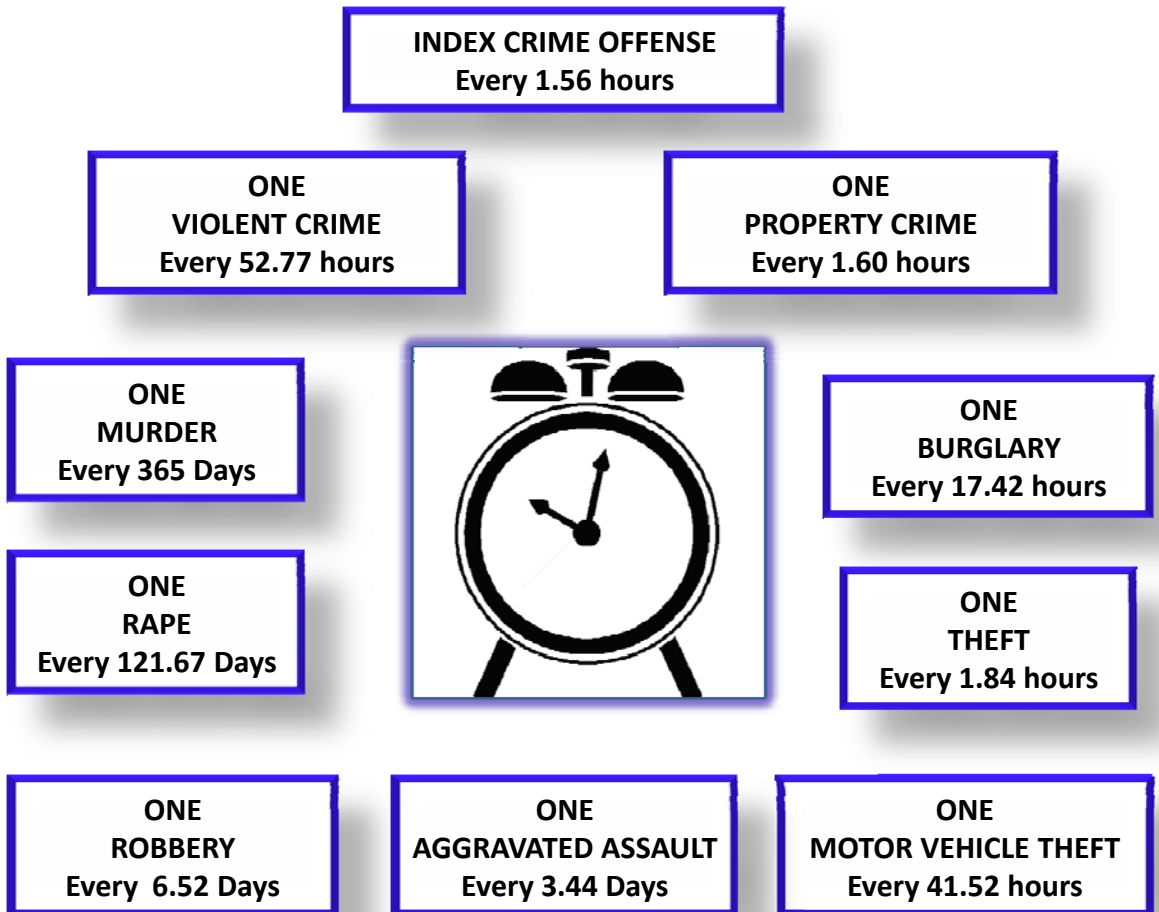


Monthly crime variations show that in general crime occurrences peaked in the month of April with a total of 506 crimes reported. The lowest month of reported crime for 2012 was in February with 407 Part 1 crimes reported. (See figure: 3)

**Monthly Index Totals
Crime in McAllen 2012
Figure:3**



McAllen Index Crime Clock 2012



This mode of display represents the annual ratio of crime to fixed time intervals.

This is an aggregate representation of UCR data, it is designed to convey the annual reported crime experience by showing the relative frequency of occurrence of the Index Offenses.

McAllen

Crime Facts at a Glance

2012

- There were an estimated 5631 index offenses. The Crime rate for the City of McAllen was 4150.6 index offenses per 100,000 habitants.
- During 2012, McAllen Police made 7540 arrests. Of those arrested, 1,225 were 17 years of age or younger.
- The value of stolen property totaled \$7,894,146.
- There was an estimated 106 Aggravated assaults. Of these, 25 percent were committed with the use of firearms.
- Residential burglaries accounted for 64% of all burglaries reported.
- The estimated number of motor vehicle thefts were 211, for a total dollar loss \$ 2,664,724.
- In 2012, larceny/theft victims suffered losses totaling \$3,323,189.

Chapter Two

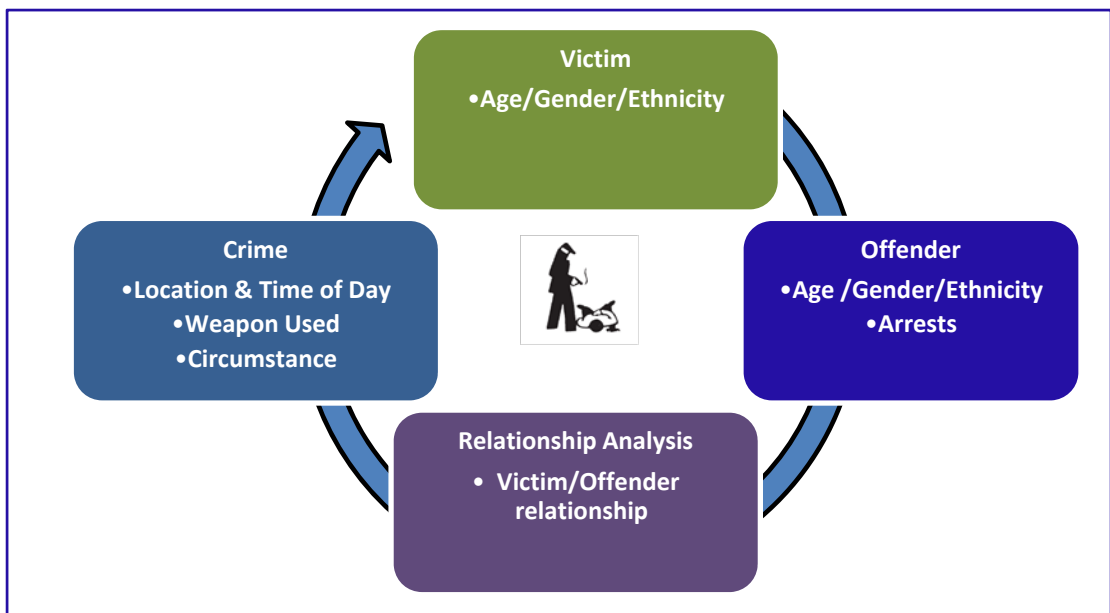
Index Crime Analysis

CRIMINAL HOMICIDE

MURDER /NON-NEGLIGENT MANSLAUGHTER

DEFINITION

Murder and non-negligent manslaughter, as defined in the UCR program, is the willful killing of one human being by another. This offense category includes any death resulting from a fight, argument, quarrel, assault or commission of a crime. Attempted murder and assaults with the intent to kill are not counted as murder, but are included in UCR as aggravated assaults. Suicides, accidental deaths, and justifiable homicides are also excluded from the murder classification.



The McAllen Police Department participates in UCR providing additional information so that an in-depth analysis of murder is possible. Through Supplement Homicide Reporting System, information is provided that identifies the age, sex, race, and ethnic origin of both victim and offender; the murder weapon; and the circumstance of the offense.

VOLUME

There was 1 murder reported during 2012.

The murder occurred in the month of September. (See figure: 4)

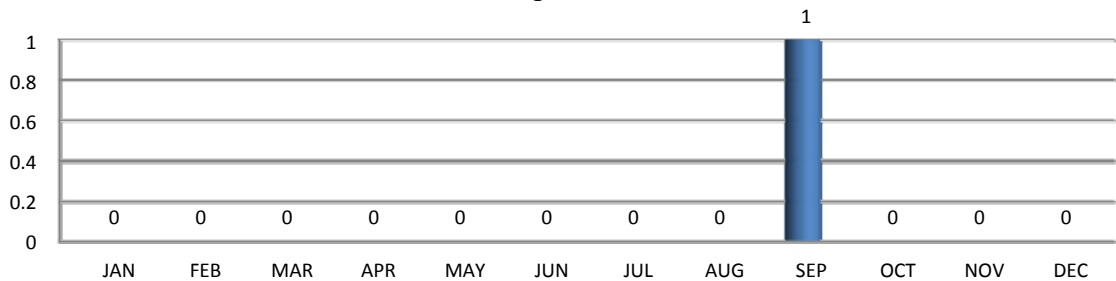
During 2012 the murder volume was approximately 75.0% less than in 2011.

RATE

The murder rate for McAllen in 2012 was 0.7 murders committed for every 100,000 persons.

The murder rate decreased by 75.5% from 2011.

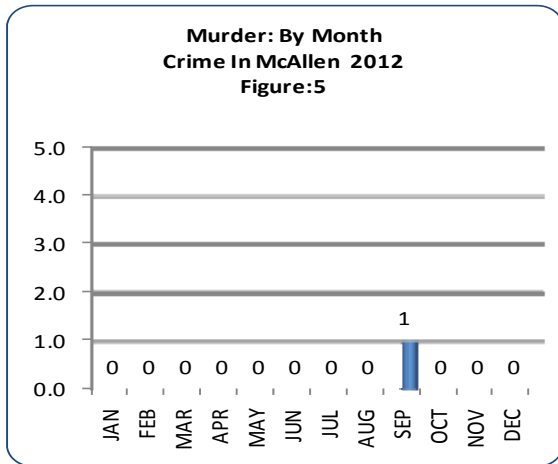
**Murder Monthly Index Totals
Crime In McAllen 2012
Figure: 4**



OFFENSES BY MONTH

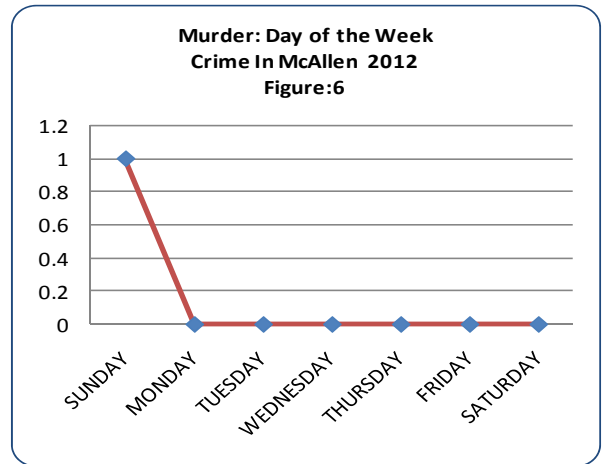
During 2012, the month of September recorded the only murder. (See figure:5)

Note: Pathology determination: Homicide



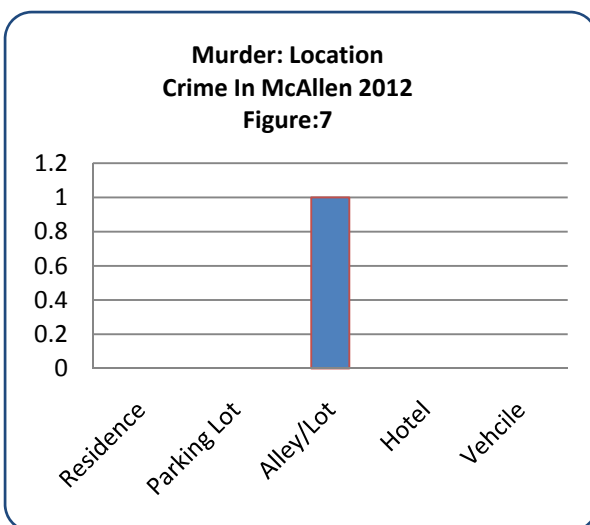
OFFENSES BY DAY OF WEEK

During 2012, the day of the week being Sunday recorded the only number of murder with 1 reported. (See figure:6)



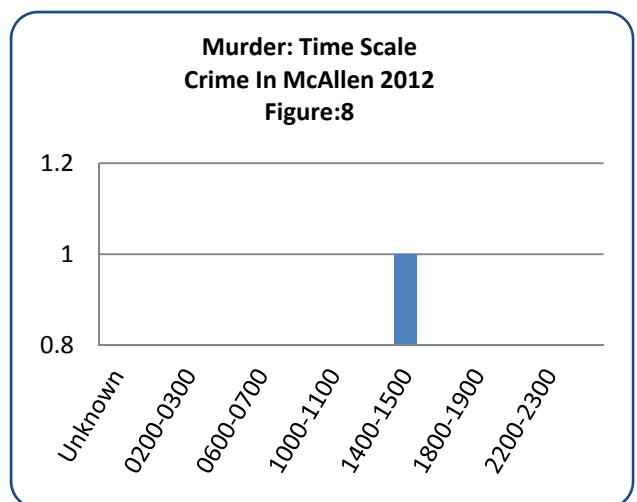
LOCATIONS

Based on data compiled, the murder occurred in ally/open field (See figure:7)



TIME SCALE

Murder occurred between the hours of 1400-1500 . (See figure:8)



MURDER VICTIMS

In 2012 murder victim's age was 55-59 years of age.

VICTIM'S ETHNICITY

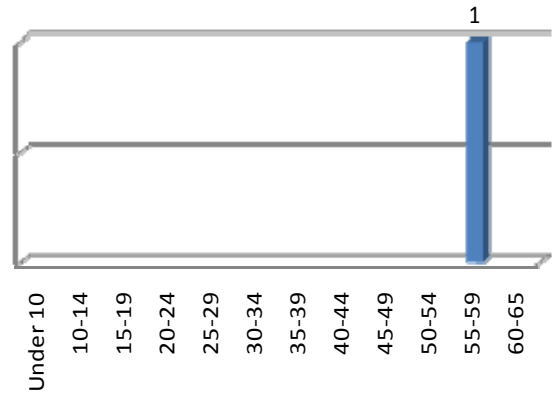
Victim's ethnicity was Hispanic. (See figure:10)

VICTIM'S GENDER

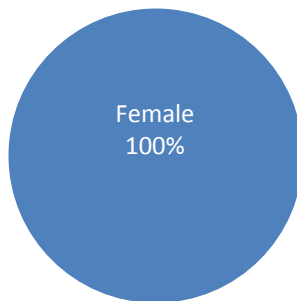
Murder victim was comprised 100% female. (See figure: 11)

**Murder: Victims by Age Category
Crime In McAllen 2012**

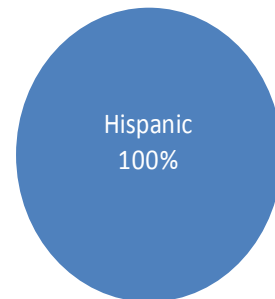
Figure: 9



**Murder: Victims by Gender
Crime in McAllen 2012**
Figure: 11



**Murder: Victims by Ethnicity
Crime in McAllen 2012**
Figure: 10



OFFENDERS

For Uniform Crime Reporting purposes, an offense is cleared only when law enforcement agency has identified the offender, enough evidence exists to press charges, and the subject is actually taken into custody.

The arrests of one person can clear several crimes or several persons maybe arrested in the process of clearing one offense. Law enforcement agencies may also clear a crime by exceptional means when some element beyond law enforcement control precludes the placing of formal charges against the offender.

OFFENDER'S AGE

Offender's age range was unknown.
(See figure: 12)

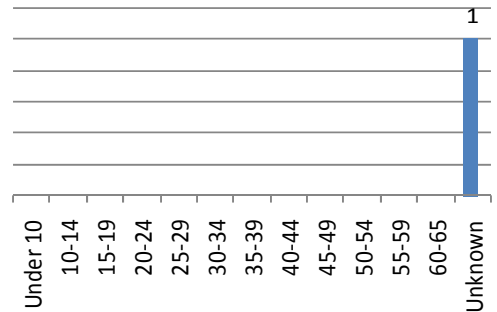
OFFENDER'S GENDER

Based on the information relating to murder offender it can be determined that 100 percent of offender in 2012 was unknown. (See figure:13).

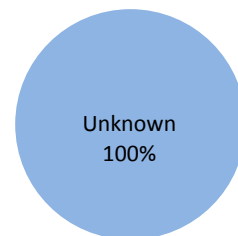
OFFENDER'S ETHNICITY

Offender's ethnicity accounted for 100 percent unknown. (See figure: 14).

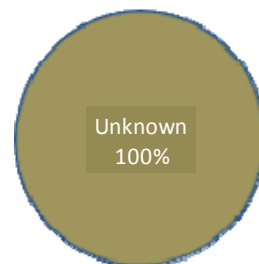
**Murder: Offenders by Age Category
Crime in McAllen 2012
Figure: 12**



**Murder: Offenders by Gender
Crime in McAllen 2012
Figure: 13**



**Murder: Offenders by Ethnicity
Crime in McAllen 2012
Figure: 14**



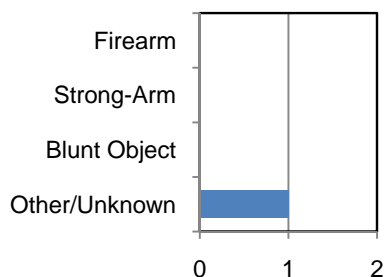
RELATIONSHIP

In addition, it can be inferred from the data compiled, that the relationship of victim to offender, could not be determined.

WEAPON

The weapon used in the murder was other/unknown accounted for 100 percent. (See figure: 16).

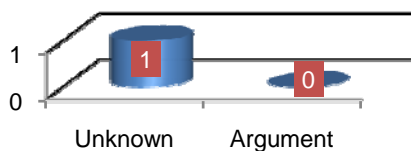
**Murder: Type of Weapon
Crime In McAllen 2012
Figure: 16**



CIRCUMSTANCES

The data shows that the circumstance for murder being committed, were unknown (See figure: 15).

**Murder: Circumstance
Crime In McAllen 2012
Figure: 15**



FORCIBLE RAPE

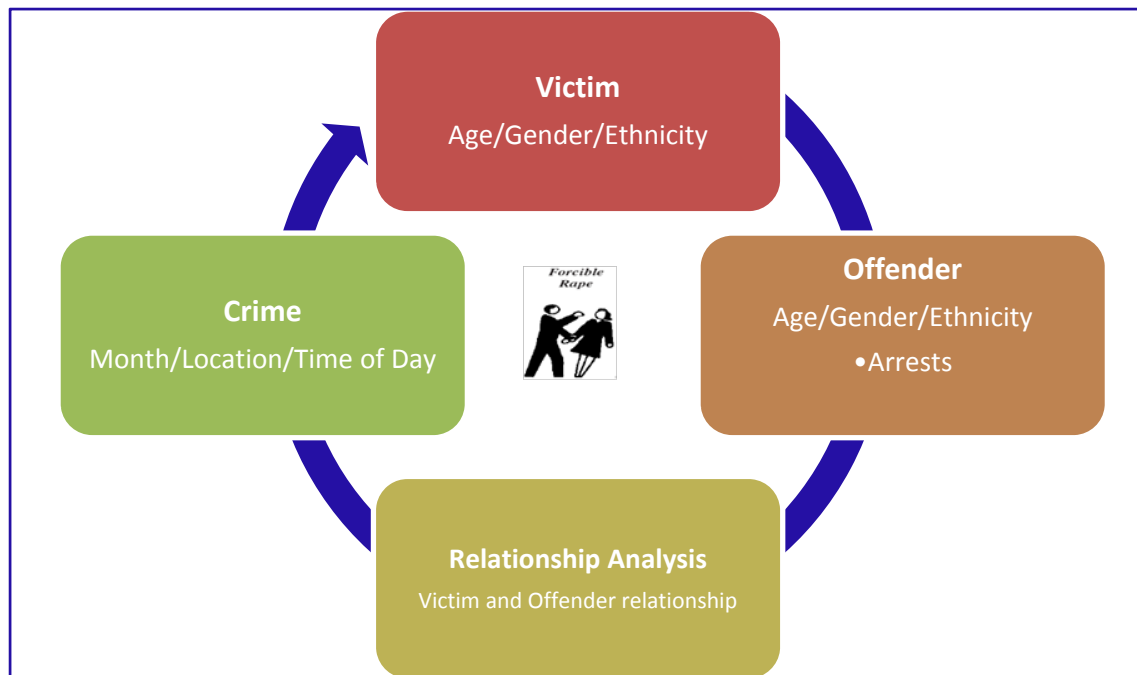
DEFINITION

Rape, as defined in the Uniform Crime Reporting Program, is the carnal knowledge of a female forcibly and against her will. Carnal knowledge is defined by Black's Law Dictionary (9thed) as, "the act of a man having sexual bodily connections with a woman; sexual intercourse".

"Against her will" include instances in which victim is incapable of giving consent because of her temporary or permanent mental or physical incapacity (or because of her youth). The ability of the victim to give consent must be a professional determination by the law enforcement agency.

Reporting agencies must classify rapes or attempted rape, accomplished by force or threat of force, as forcible regardless of the age of the female victim.

Statistics reported in this crime category include assaults to commit forcible rape, however, statutory rape (rape against a female under the age of consent) and sexual assaults on males are excluded.



VOLUME

There were 3 rapes reported during 2012. This represents a decrease of 88.9 percent when compared to 2011.

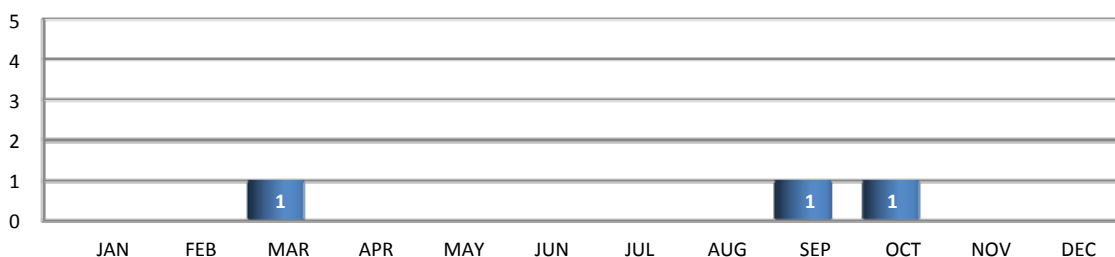
Rapes occurred in March, September and October. (Please see figure: 17)

RATE

The rape rate for McAllen was 2.2 rapes per 100,000 persons.

The rape rate decreased by 89.1 percent when compared to 2011.

**Summary of Index Crime: Forcible Rape
Crime In McAllen 2012
Figure: 17**



VICTIMOLOGY

Forcible Rape differs from other violent crimes because, in many cases, the victims is hesitant to report the offense to the police. The rigors of court procedures, embarrassment, and fear of any accompanying stigma exert a deterrent effect upon the victim's willingness to contact the police. As attitudes towards the reporting of rape change, trends in the number of reported offenses can be expected to change accordingly.

Data compiled during 2012 shows that there were 3 victims.

VICTIMS BY AGE GROUP

Rape victims range from all age groups. Within these age groups, the age group that were reported the highest incidents was the 10-14 age group, with 2 incidents. (See figure:18)

The lowest number of victims reported was the 15-19 age group with 1 .

VICTIMS BY AGE TYPE

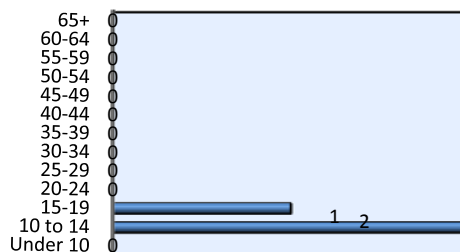
Of the 3 rapes reported in 2012, 100% were juveniles. (See figure: 19)

It can be determined that there are more juvenile victims than adult arrested for rape.

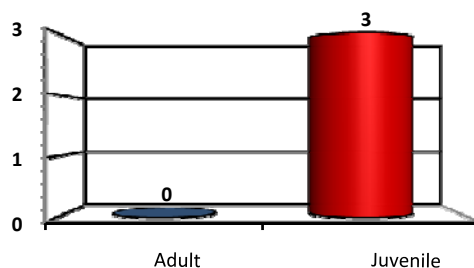
VICTIMS BY ETHNICITY

All victims of rape demonstrated to be Hispanic . (See figure:20)

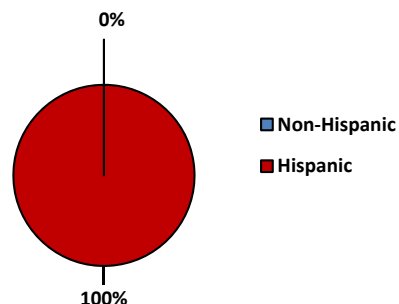
**Forcible Rape: Victims by Age Group
Crime In McAllen 2012
Figure: 18**



**Forcible Rape: Victims by Age Type
Crime In McAllen 2012
Figure: 19**



**Forcible Rape: Victims by Ethnicity
Crime In McAllen 2012
Figure: 20**



OFFENDERS

PERSONS ARRESTED

During 2012 a total of 3 offenders were reported for rape. Of the 3 offenders a total of 1 perpetrators were arrested for rape.

OFFENDER BY AGE GROUP

Offenders range from all age groups. Within these age groups, the age group that reported the highest number of offenders was the 10-14 age group, with 2 incidents. The adult age group was the 40-44. (See figure: 21)

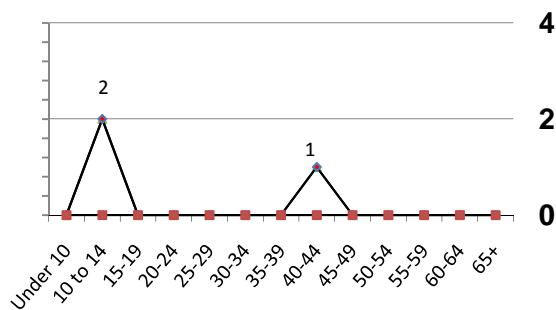
OFFENDER BY AGE TYPE

Offenders reported for rape were 1 adult and 2 juveniles. (See figure: 22)

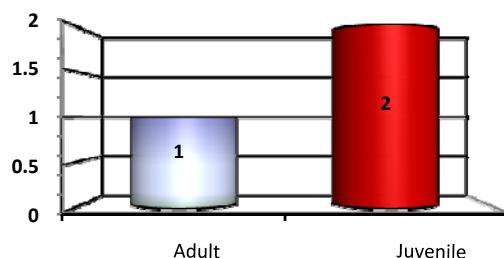
OFFENDER BY ETHNICITY

The offenders for the rape category also demonstrated to be 100% Hispanic. (See figure: 23)

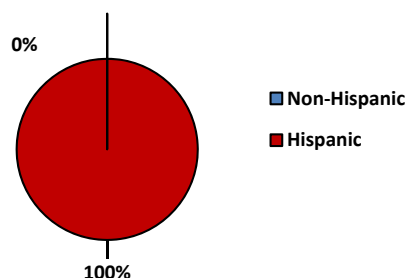
**Forcible Rape: Offender by Age Group
Crime In McAllen 2012
Figure: 21**



**Forcible Rape: Offender by Age Type
Crime In McAllen 2012
Figure: 22**



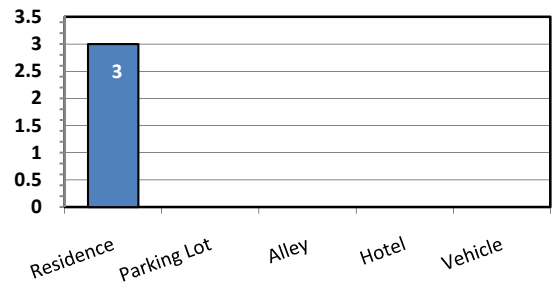
**Forcible Rape: Offender Ethnicity
Crime In McAllen 2012
Figure: 23**



LOCATION OF CRIME

During 2012 period, the most common location where a rape occurred was in a residence, with a total of 3 of the accounted rapes. (See figure: 24)

**Forcible Rape: Location of Crime
Crime In McAllen 2012
Figure: 24**



RELATIONSHIP

Based on the rape analysis it can be determine that the relationship of victim to offender resulted in percent being 33 percent family member and 67 percent accounted for non family members. (See table: 2)

Relationship of Victim To Offender			
Table: 2			
Relationship Type	Group Percentage	Victim's Relationship	Number
FAMILY	33%	Husband	
		Ex-Husband	
		Father	
		Step-Father	1
		Brother	
		Step- Brother	
		Brother -in-Law	
		Uncle	
		Grandfather	
		Cousin	
		Total	1
NON FAMILY	67%	Acquaintance	1
		Boyfriend	1
		Ex-Boyfriend	
		Stranger	
		Total	2

ROBBERY

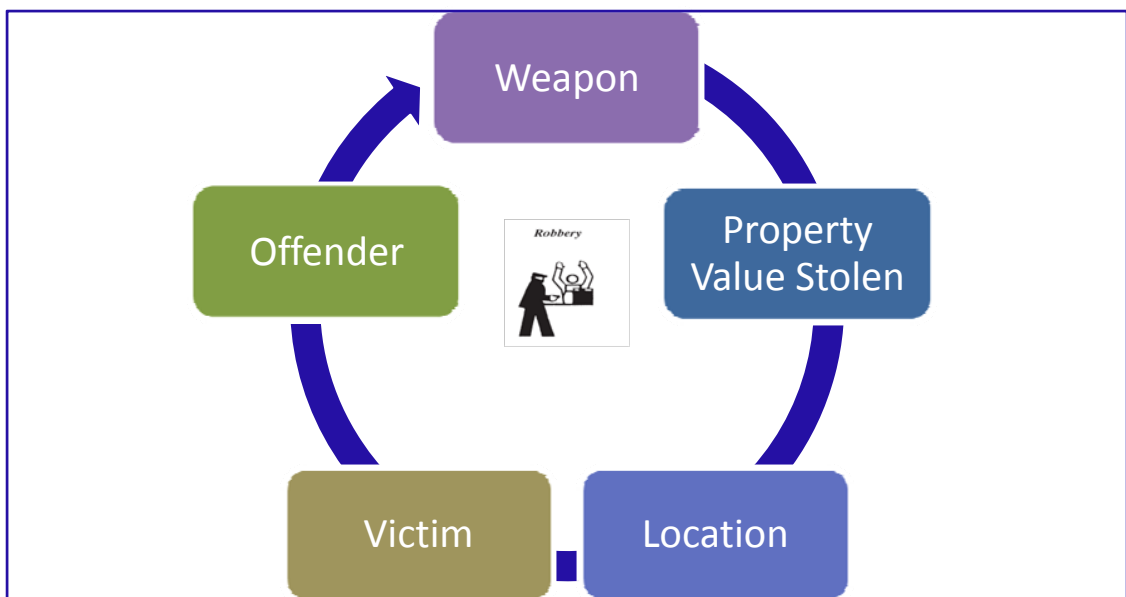
DEFINITION

Robbery is the taking or attempting to take anything of value from the care, custody or control of a person or persons by force or threat of force or violence and/or by putting the victim in fear.

Robbery is a vicious type of theft in that it is committed in the presence of the victim. The victim, who usually is the owner or person having custody of the property, is directly confronted by the perpetrator and is threatened with force or is put in fear that force will be used. Robbery involves a theft or larceny but is aggravated by the element of force or threat of force.

Injury to the victim during the commission of this violent crime is frequent.

The following figure illustrates the data collection for the nature and extent of the Robbery Category.



VOLUME

The total number of robberies reported during 2012, was 56 .

The month of August reported the highest number of robberies, with 8 reported.

During 2012 the robbery volume was 56 approximately 22.2% less than in 2011.

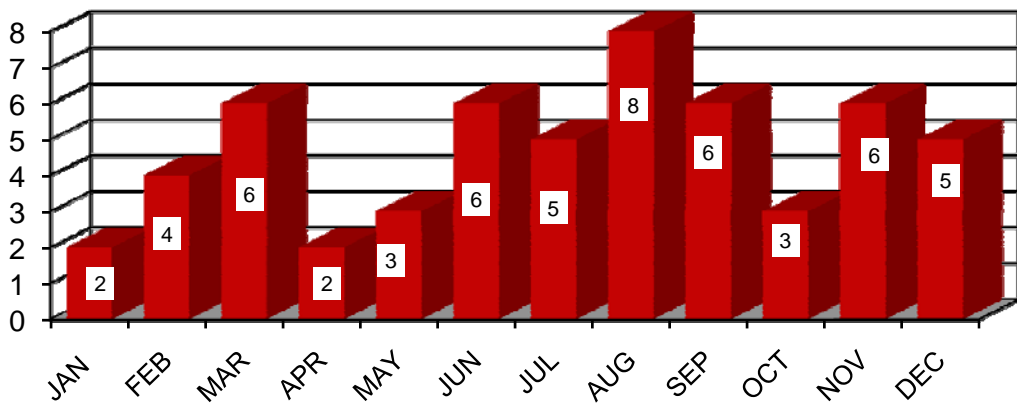
The **lowest** months with robberies was in January and April with only 2 robberies reported.

RATE

The robbery rate McAllen in 2012 was 41.3 robberies for every 100,000 persons.

The change in the rate of robbery from 2011 was a decrease of 23.9%.

**Summary of Index Crime: Robbery
Crime In McAllen 2012**



ANALYSIS

NATURE

During 2012, property loss during the commission of robberies amounted to \$102,750. (See table: 3)

The month with the highest property loss reported was in November with a reported \$34,434.

The month with the lowest loss was January with \$6 of losses being reported from the commission of a robbery.

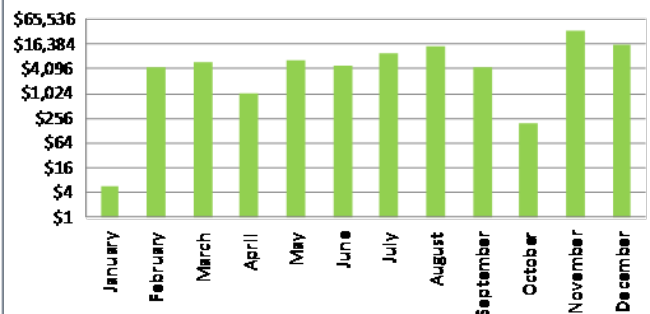
LOCATION

Of all reported robberies in 2012 "Highway" and "Commercial" accounted for 25 percent and 18 percent at "Other" of the offenses in this category.

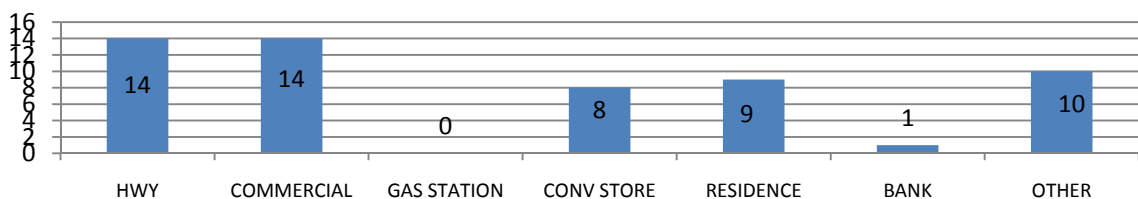
According to the data compiled, robbery at "Convenience Stores" accounted for 14 % of incidents reported.

Robbery: Property Loss Values	
January-December 2012	
Table:3	
Month	TOTAL
January	\$6
February	\$4,500
March	\$6,105
April	\$1,000
May	\$6,440
June	\$4,749
July	\$10,120
August	\$14,245
September	\$4,492
October	\$189
November	\$34,434
December	\$16,470
Total	\$102,750

Robbery: Property Losses
Crime In McAllen 2012
Figure: 25



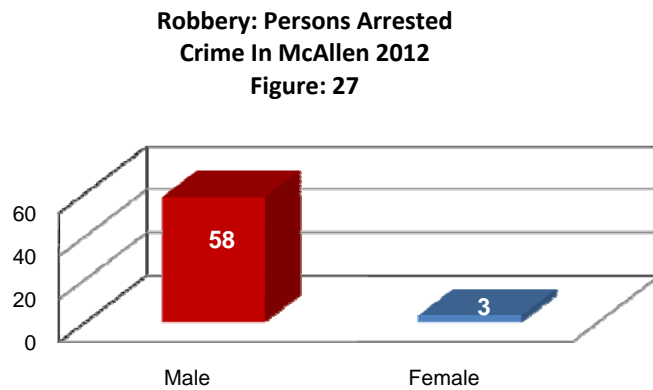
Robbery: By Location
Crime In McAllen 2012
Figure:26



PERSONS ARRESTED

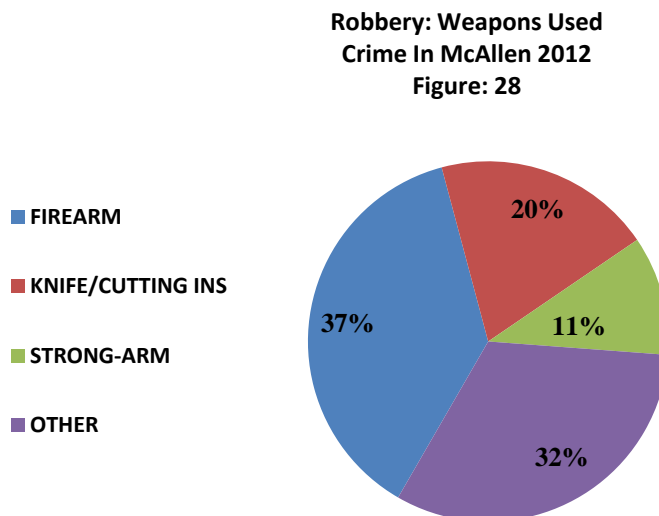
During 2012, a total of 61 persons were arrested for robbery.

Of the persons arrested for robbery, 95% were male and 5% were female.
(See figure: 27)



TYPE OF WEAPON

The weapon most frequently used to commit a robbery was the use of firearm which accounted for 37% of incidents while the other category was used 32% and knife/cutting instrument accounted for 20%. (See figure:28)



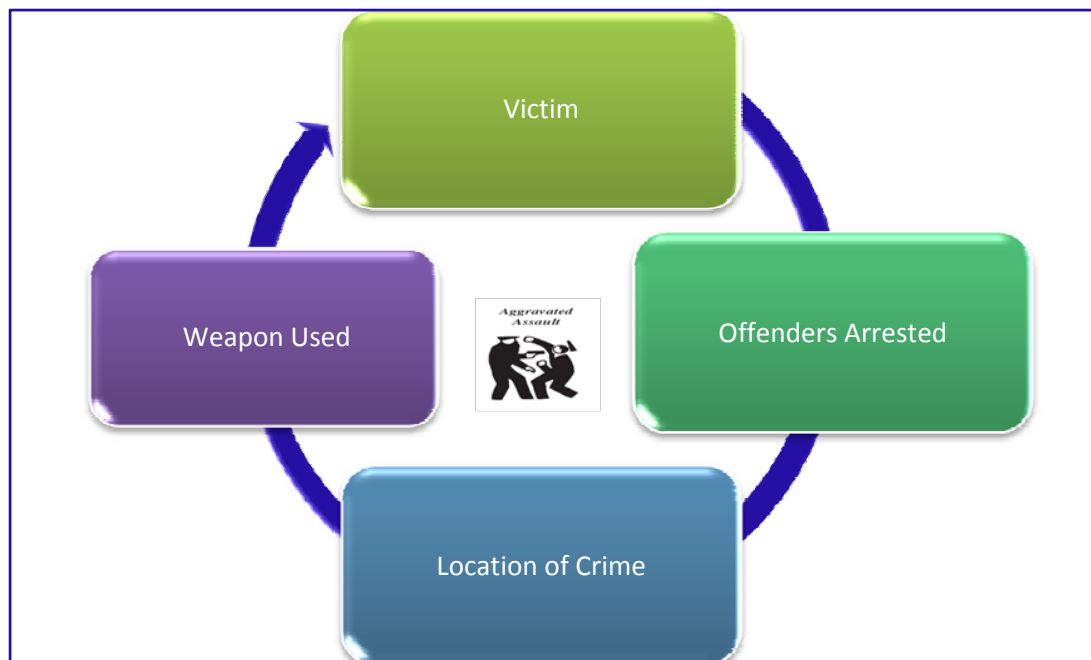
AGGRAVATED ASSAULT

DEFINITION

Aggravated assault, as per the Uniform Crime Reporting Program is an unlawful attack by one person upon another for the purpose of inflicting severe or aggravated bodily injury. This type of assault usually is accompanied by the use of a weapon or by means likely to produce death or great bodily harm.

Aggravated assaults are classified into four different categories:

- (1) Assault with firearm
- (2) Assault with knife or cutting instrument
- (3) Assault with other dangerous weapon
- (4) Assault using strong-arm tactics



VOLUME

During 2012 a total of 106 aggravated assaults were reported.

The average monthly volume for aggravated assaults was 9.

The highest month recorded on aggravated assaults was April with 13 offenses reported.

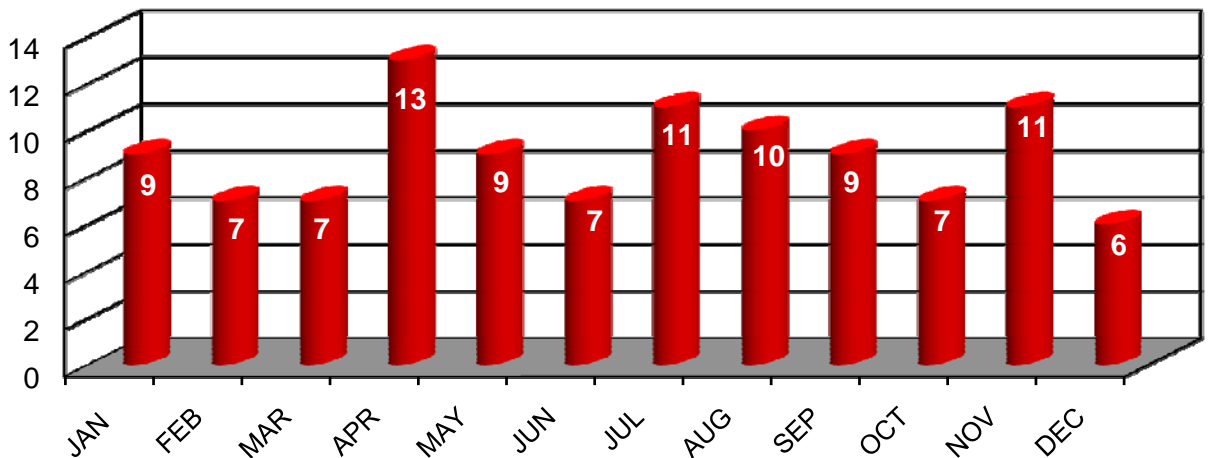
The lowest aggravated assault volume was recorded in December with 6 offenses.

The number of aggravated assaults committed in 2012 were 106. This represents a 25.9% decrease from 2011.

RATE

The aggravated assault rate for McAllen in 2012 was 78.1 per 100,000 persons. The rate decreased 27.5 percent from 2011.

**Summary of Index Crime: Aggravated Assaults
Crime In McAllen 2012**



ANALYSIS

NATURE

During 2012 a total of 106 aggravated assaults were reported . A significant decrease compared to 143 reported in 2011.

WEAPON USED

Aggravated assaults are classified into four different categories: (1) Assault with firearm, (2) Assault with knife or cutting instrument, (3) Assault with other dangerous weapon, and (4) Assault using strong-arm tactics.

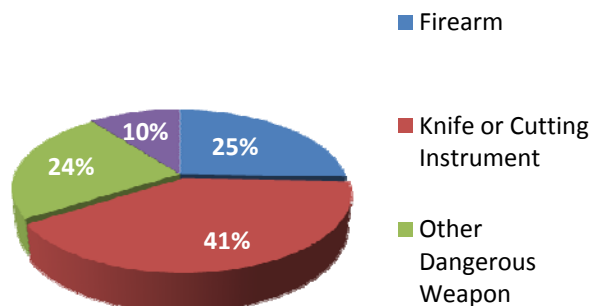
During 2012 the most frequently used weapon in the commission of an aggravated assault was in “knife or cutting instrument” category with 41% reported. Firearm category with 25% and the Other dangerous weapon with 24% this category includes, but is not limited to: clubs, bricks, tire irons, bottles, or other blunt objects.
(See figure: 29)

The use or attempted use of a dangerous weapon in an assault or the serious injury inflicted by hands, fists, or feet is what separates this index offense from the assault categorized as “simple assaults”.

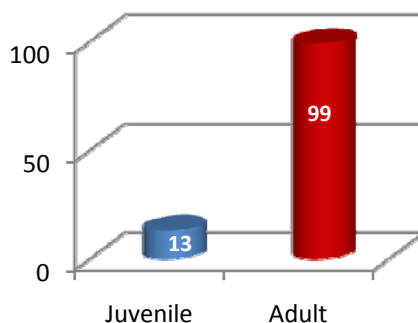
PERSONS ARRESTED

McAllen Law Enforcement Officers arrested 112 people for aggravated assaults in 2012. Of the 112 persons arrested of the perpetrators were 99 were adults and 13 were juveniles.
(See figure: 30)

**Aggravated Assault: Weapon Used
Crime in McAllen 2012
Figure:29**



**Aggravated Assault: Arrestee By Age
Crime in McAllen 2012
Figure: 30**



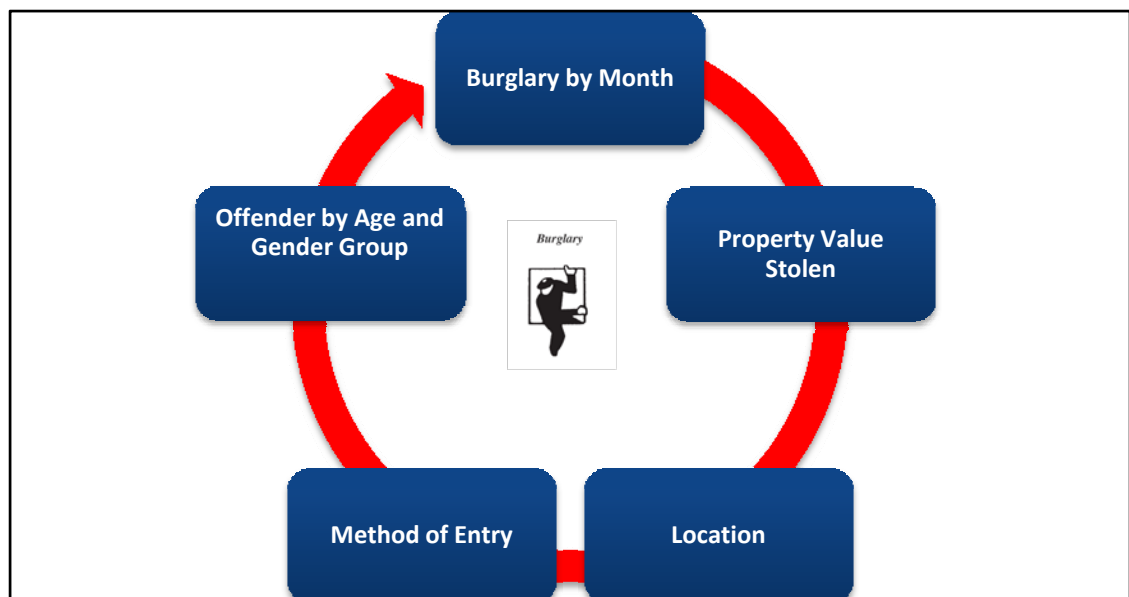
BURGLARY

DEFINITION

Burglary for Uniform Crime Reporting purposes is the unlawful entry of a structure to commit a felony or theft. Burglary can be classified as forcible entry, unlawful entry (no force) or attempted forcible entry. While the use of force to gain entry is not required to classify an offense as burglary, attempted forcible entries to commit burglary are counted in this crime's statistics.

The Uniform Crime Reporting program's definition of structure includes, but is not limited, to an apartment, barn, cabin, church, condominium, dwelling house, factory, garage, house trailer, office, school, railroad car and other buildings.

Additionally, any house trailer or other mobile unit that is permanently fixed as an office, residence, or storehouse is considered a structure.



VOLUME

During 2012 there were 503 burglaries reported in the City of McAllen. The average monthly volume for 2012 is 42.

This represents a 1.6% decrease when compared to 511 burglaries reported in 2011.

The highest volume reported was in May with 52 burglaries reported.

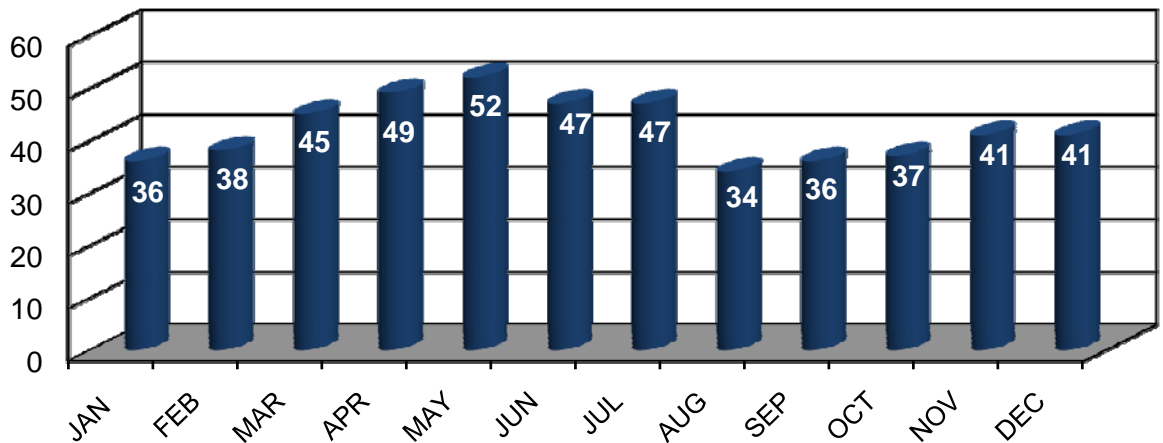
The lowest volume reported was in the month of August with 34 burglaries reported.

RATE

The 2012 burglary rate was 370.8 burglaries for every 100,000 persons.

The change in the burglary rate from 2011, shows a decrease of 3.7%.

**Summary of Index Crime: Burglary
Crime In McAllen 2012**



ANALYSIS

The most common entry for burglary was forcible entry, which accounted for 63 percent and non-forcible accounted for 37 percent. Of the number of burglaries 320 were residential and 183 were non-residential.

Total property loss reported for burglary was \$ 1,906,233. (See table 4)

Offenders age ranged from 10-61+ years of age. Of the 503 burglaries, 148 were cleared by arrest.

Adult males accounted for 69% of arrestees. (See figure: 33)

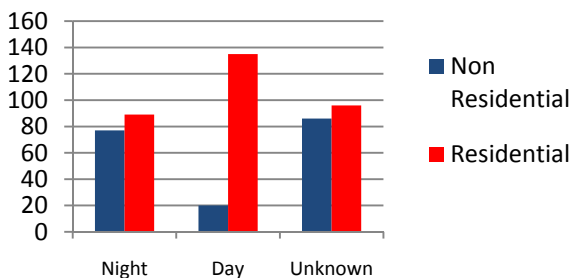
Burglary: Property Loss Values

January - December 2012

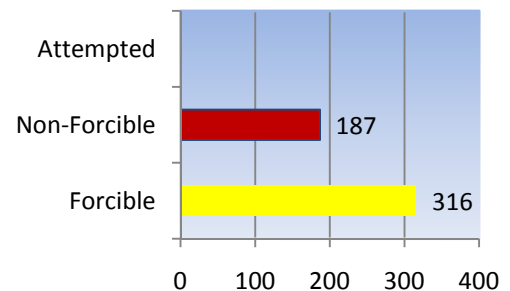
Table: 4

Month	Total
January	\$55,713.00
February	\$123,700.00
March	\$219,824.00
April	\$133,158.00
May	\$115,256.00
June	\$182,880.00
July	\$203,692.00
August	\$50,094.00
September	\$355,182.00
October	\$137,421.00
November	\$200,982.00
December	\$128,331.00
Total	\$1,906,233.00

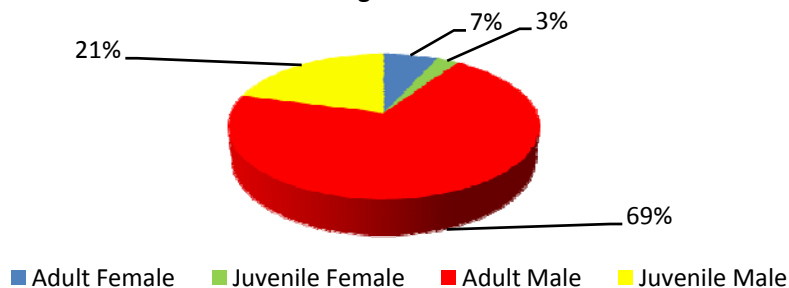
**Burglary: By Location
Crime in McAllen 2012
Figure: 31**



**Burglary: By Method of Entry
Crime in McAllen 2012
Figure: 32**



**Burglary: By Persons Arrested
Crime in McAllen 2012
Figure: 33**



LARCENY (THEFT)

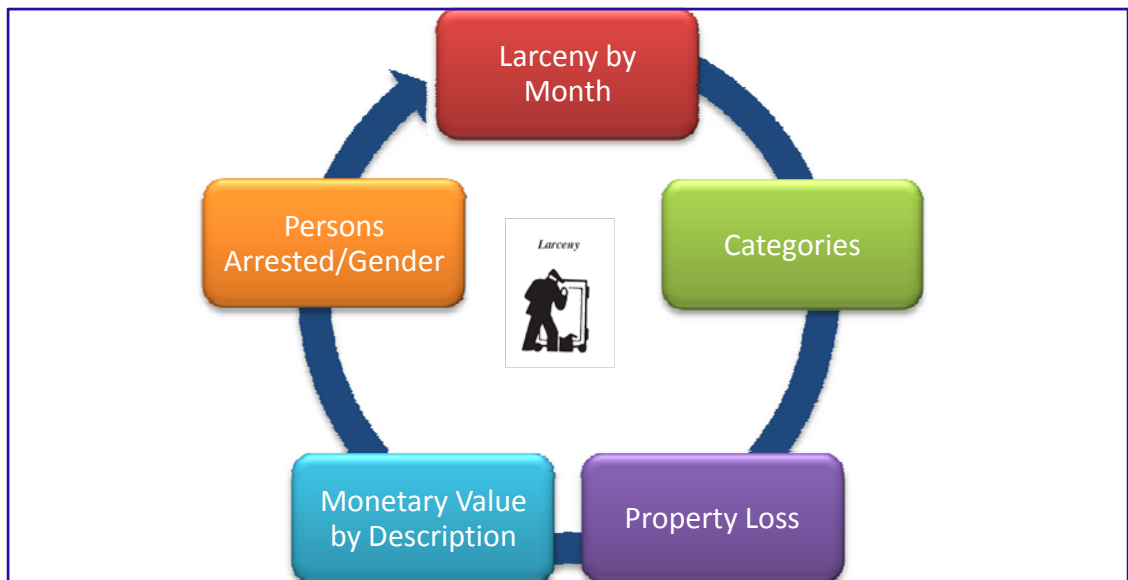
DEFINITION

Larceny/Theft, in the Uniform Crime Reporting program, is the unlawful taking, carrying, leading, or riding away of property from the possession or constructive possession of another. Larceny/Theft includes crimes such as shoplifting, pocket-picking, purse snatching, thefts from motor vehicles, theft of motor vehicle parts and accessories, bicycle thefts, and other things of value in which no use of force, violence or fraud occurs.

In the UCR program, this crime classification does not include embezzlement, “con” games, forgery, and the passing of worthless checks. Motor vehicle theft is not included in this category as it is a separate index crime offense.

Larceny can be sub-classified into 9 different categories:

- ❖ Pocket Picking
- ❖ Purse Snatching
- ❖ Shoplifting
- ❖ Theft from Motor Vehicle
- ❖ Theft from Vehicle Parts
- ❖ Theft of Bicycles
- ❖ Theft of Building
- ❖ Theft of Coin-Operated Machines
- ❖ All Other Thefts



VOLUME

The number of thefts committed in McAllen in 2012 was 4751, making this the largest crime category of the Index Crimes. The volume of theft decreased by 8.4 percent when compared to 2011.

More thefts were committed in April and August than any other month. The fewest thefts occurred in February.

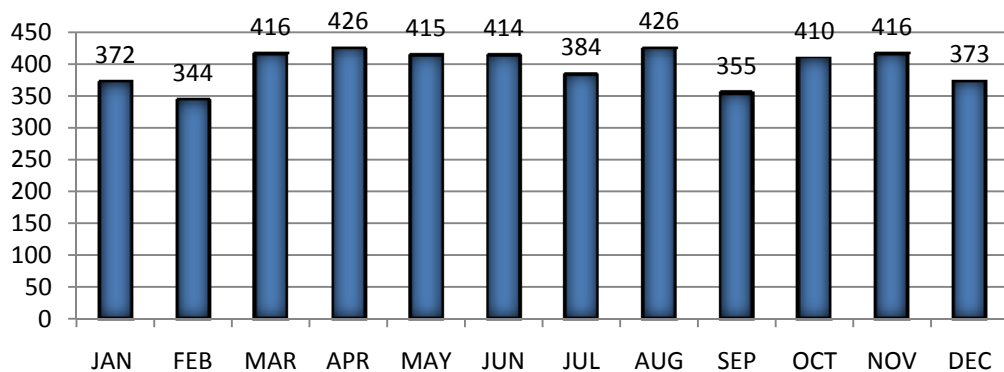
RATE

The 2012 Larceny rate was 3502.0 thefts per 100,000 persons.

The change in theft rate from 2011 was a decrease of 10.3%.

It is reasonable to expect that many offenses in this category, particularly where the value of goods stolen is small, are never reported to police agencies.

**Larceny: By Month
Crime in McAllen 2012**



ANALYSIS

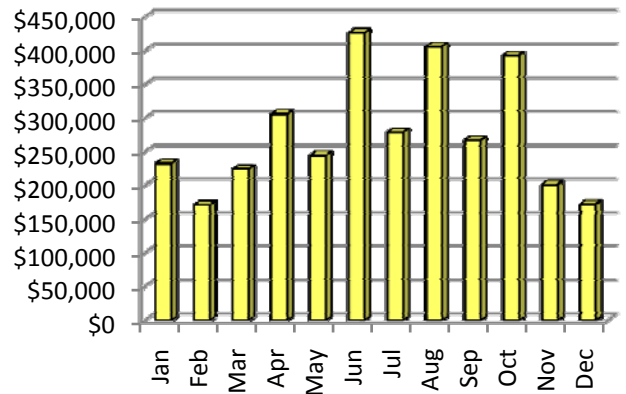
NATURE

The data from the 9 sub-categories of larceny show that the category with the most reported larcenies was the "Shoplifting" with 1889 offenses.

The "Shoplifting" yielded 40% of all thefts, while the theft from "Auto" and "Other" category" closely followed with 21%.

The "All Other Category" accounts for all thefts that did not fit any other category listed in the Uniform Crime Reporting Program. This could include tools, lawn equipment, farm equipment,, etc. (See table: 5)

**Larceny: Property Loss
Crime in McAllen 2012
Figure: 34**



The highest property loss for victims of larcenies was in the month of June with a recorded \$ 426,350. The month with lowest property loss was February, with \$ 171,514. (See figure: 34)

**Property Stolen by Classification
Crime in McAllen 2012**

Table: 5

Type of Theft	2012	2011	% CHANGE
Pick Pocket	8	3	166.67%
Purse Snatching	6	5	20%
Shoplifting	1889	1925	-1.87%
From Autos	999	1029	-2.92%
Auto Parts	713	751	-5.06%
Bicycles	77	56	37.50%
From Buildings	50	140	-64.29%
From Coin-Operated Machines	12	8	50%
Other	997	1267	-23.31%
Total	4751	5184	-8.65%

**Value of Property Stolen in Theft
Crime in McAllen 2012
Table: 6**

Type of Theft	Offenses	Property Value	Average Loss
Pick Pocket	8	\$2,655	\$332
Purse Snatching	6	\$1,807	\$301
Shoplifting	1889	\$268,289	\$142
From Autos	999	\$818,285	\$819
Auto Parts	713	\$370,900	\$520
Bicycles	77	\$14,207	\$184
From Buildings	50	\$219,910	\$4,398
From Coin-Operated Machines	12	\$1,695	\$141
Other	997	\$1,625,441	\$1,630
Total	4751	\$3,323,189	\$699

PROPERTY CATEGORIES

Property loss is categorized into 10 different subcategories. Of these 10 subcategories, the “Miscellaneous” category accounted for \$ 3,124,288, which accounted for most of the monetary loss. Following were the categories of “Jewelry” and “TV/Radios”. (See table: 7)

After analyzing all the property index crimes: Burglary, Larceny, and Auto Theft, it can be inferred from the data collected, the highest monetary loss is in Larceny category. See Figure: 35)

Persons Arrested

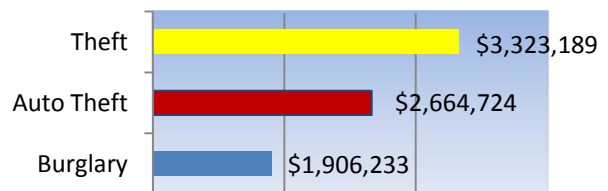
McAllen Law Enforcement officers made 1585 theft arrests during 2012.

Of the subjects arrested for theft during 2012, 876 were males and 709 were female.

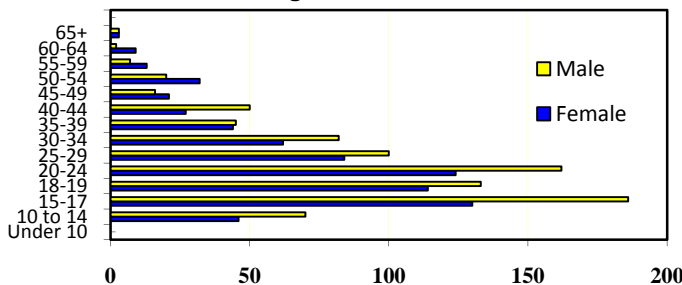
The age group with the largest number of theft arrestees was the 20-24 year old with a total of 286 subjects arrested. (See figure: 36)

Property Types: Monetary Value Stolen and Recovered Crime In McAllen 2012 Table: 7		
Description	Stolen	Recovered
Currency	\$642,743	\$37,423
Jewelry	\$617,910	\$41,994
Clothing	\$174,291	\$81,227
Office Equipment	\$252,961	\$15,389
TV/Radios	\$274,025	\$15,687
Firearms	\$36,639	\$75
Household Goods	\$33,162	\$20
Consumable Goods	\$24,264	\$2,883
Livestock	\$2,201	\$161
Miscellaneous	\$3,124,288	\$143,159
Total	\$5,182,484	\$338,018

**Property Crime: Loss By Index Crime
Crime in McAllen 2012
Figure: 35**



**Larceny/Theft:
Arrestees by Age and Gender
Crime In McAllen 2012
Figure: 36**



MOTOR VEHICLE THEFT

DEFINITION

Motor vehicle theft is a theft or attempted theft of a motor vehicle. Motor vehicle includes the theft or attempted theft of a motor vehicle, which the UCR Program defines as a self-propelled vehicle that runs on land surface and not on rails.

The Category of motor vehicle theft is further sub categorized into three subcategories:

1. Automobiles:

The automobile category includes all sedans, station wagons, coupes, convertibles, and other similar vehicles whose primary purpose is to transport persons from one place to another.

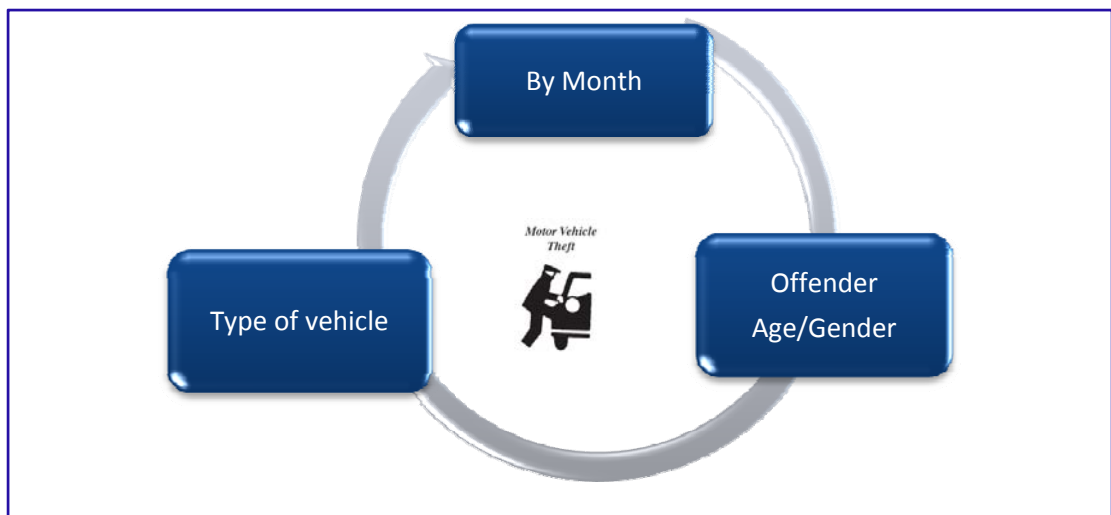
2. Trucks & Buses:

The Truck & Buses category includes vehicles whose purpose is to transport persons for a commercial bases. This includes pick-up trucks, vans, and self propelled motor homes.

3. Other Vehicle Category:

The other vehicle category includes vehicles such as scooters, motorcycles, snowmobiles, mopeds, and golf carts, etc.

Specifically excluded from this category are motor boats, construction equipment, airplanes, and farming equipment.



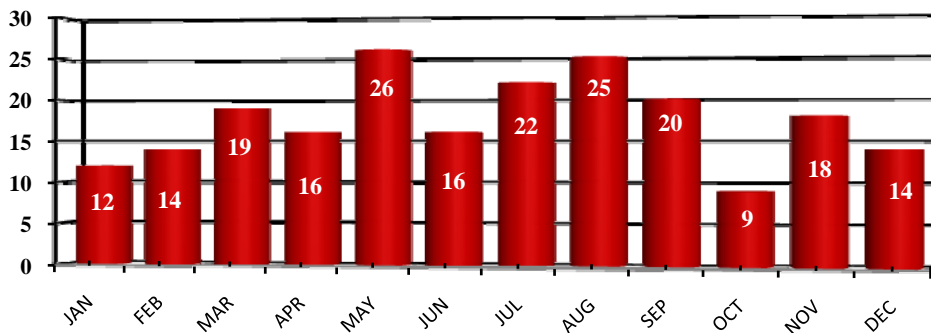
VOLUME

- ❖ During 2012 a total of 211 motor vehicle thefts were reported in the City of McAllen.
- ❖ The average monthly motor vehicle theft for 2012 is 18.
- ❖ The highest month was May with 26 motor vehicle thefts reported.
- ❖ The 2012 motor vehicle theft was 17.9 % greater than 2011.
- ❖ The lowest month was in October with 9 motor vehicle thefts reported.

RATE

- ❖ The motor vehicle theft rate for McAllen in 2012 was 155.5 thefts for 100,000 persons.
- ❖ The 2012 motor vehicle theft rate was 15.3% greater than 2011.

**Motor Vehicle: Theft by Month
Crime In McAllen 2012**



ANALYSIS

Nature

Based on the data compiled for 2012, the number of motor vehicles thefts reported in the City of McAllen was 211. The property loss in Motor Vehicle Theft is the second largest reported loss in property for the City of McAllen. The loss is largely due to the value of the vehicles, which is greater than the value of other tangible items reported in the other Property Index crimes.

Type Of Vehicle Stolen

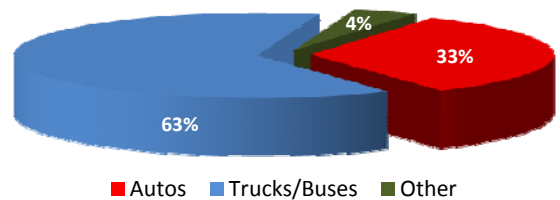
Of the 211 reported motor vehicle thefts stolen 63% were trucks and 33% were autos and the remaining 4% were other category. (See figure:37)

Persons Arrested

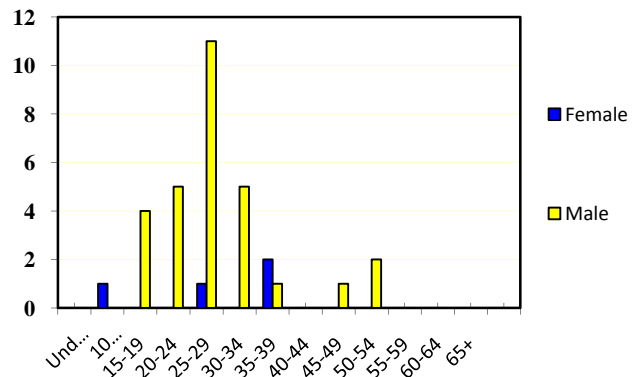
During 2012 the number of persons arrested for Motor Vehicle Theft was 54. (See figure: 38)

Of those 54 persons arrested for Motor Vehicle Theft, 48 were males 6 were females. (See figure 38.) Furthermore, of those persons 45 were adults and 9 were juveniles. The 25-29 age group was the highest on arrestees.

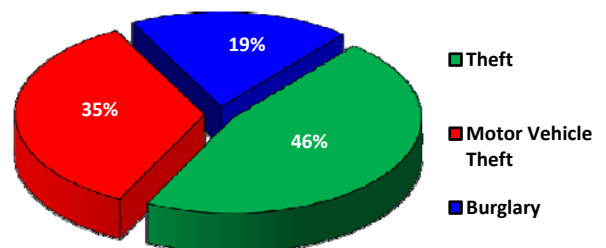
**Motor Vehicle Theft: Vehicle Type Stolen
Crime In McAllen 2012
Figure: 37**



**Motor Vehicle Theft:
Arrestees by Age and Gender
Crime In McAllen 2012
Figure: 38**



**Property Crimes: Loss by Index Crime
Crime In McAllen 2012
Figure: 39**



Chapter Three

Selected Non-Index Crimes

SELECTED NON-INDEX CRIMES 2012

There are selected crimes that have been chosen to represent important and essential information with respect to Part II offenses. As with all Part II non-index crimes, information on the number of reported crimes is not collected by the UCR Program for these offenses; however, the number of persons arrested for this crime is collected.

The following are the non-index crimes:

- ❖ Driving Under the Influence (DUI) Arrests
- ❖ Drug Abuse Arrests
- ❖ Drug Seizures
- ❖ Weapons Arrests

SELECTED NON-INDEX CRIMES:

D.U.I ARRESTS 2012

DEFINITION

For UCR purposes, Driving Under the Influence (D.U.I) is the driving or operating any motor vehicle or common carrier while under the influence of liquor or narcotics. This includes operating a motor vehicle, train, streetcar, boat, etc.

ANALYSIS

Volume

As with Part II non-index crimes, information on the number of reported crimes is not collected by the UCR program for this offense. However, the number of persons arrested for this crime is collected.

The number of arrests for D.U.I in McAllen in 2012 was 825. The volume of arrests increased by 12 percent in comparison to 2011.

Rate

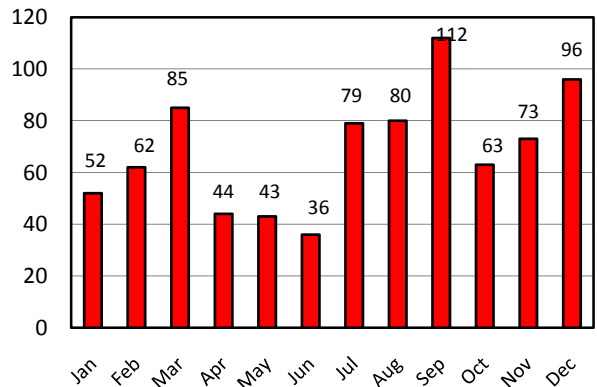
The 2012 D.U.I. arrest rate was 608.1 per 100,000 persons. When compared to 2011, this was an increase of 12 percent.

PERSONS ARRESTED

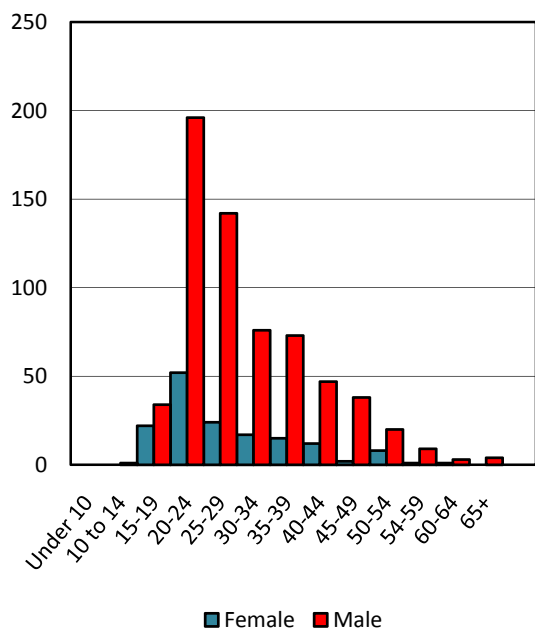
Of the persons arrested in 2012 a total of 825 DUI arrests were accounted for in the City of McAllen. The highest age category on arrests was the 20-24. (See figure: 41)

Of the total number of DUI arrests, the month with the most arrests was September with 112 arrests. The month with the fewest number of arrests was in June with 36 arrests. (See figure:40)

**D.U.I : Monthly Arrests
Crime In McAllen 2012
Figure: 40**



**D.U.I: Arrestees by Age
Crime In McAllen 2012
Figure: 41**



SELECTED NON-INDEX CRIMES:

DRUG ABUSE ARRESTS 2012

DEFINITION

For UCR purposes, drug abuse encompasses all violations of the narcotic drug laws. These are offenses such as unlawful possession, sale, use, growing, and manufacturing of narcotic drugs.

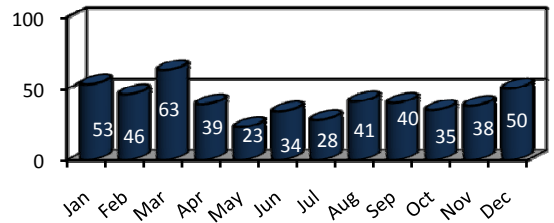
In this report, these violations are summarized to include all drug abuse arrests (grand total drug abuse), sale and manufacturing arrests, and drug possession arrests.

As with all Part II non-index crimes, information on the number of reported crimes is not collected for the UCR program. However, the number of persons arrested for these crimes is collected.

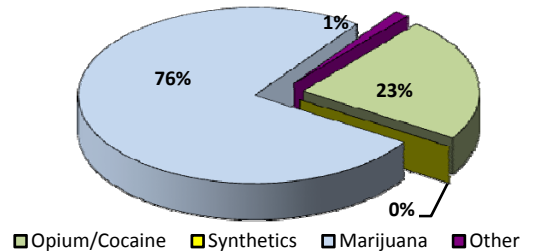
Arrests

The reported number of arrests for possession of drugs in McAllen in 2012 was 490. Of the arrestees, 63 were juveniles and 427 were adults. The age group with the largest number of persons arrested for drug possession violations was the 15-19 year old group. The largest number of possession arrests came from marijuana at 76 percent, followed by opium/cocaine at 23 percent.

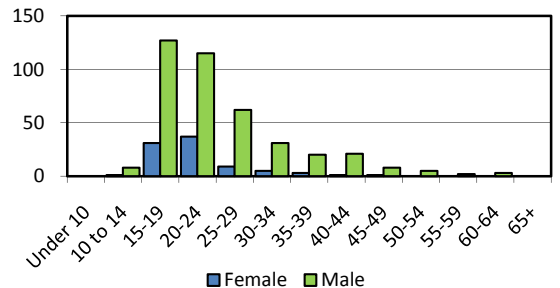
Drug Abuse: By Month
Crime In McAllen 2012
Figure: 42



Drug Possession Arrests by Drug Type
Crime In McAllen 2012
Figure: 43



Drug Abuse Arrestees by Age
Crime In McAllen 2012
Figure: 44



SELECTED NON-INDEX CRIMES:

DRUG SEIZURE 2012

DEFINITION

Drug seizure information is presented in compliance with Health & Safety Code Section 481.185 and its requirement that "All law enforcement agencies in this state shall file monthly with the (DPS) Director a report of all arrests for drug offenses made and quantities of controlled substances seized by them during the preceding month."

DRUG SEIZURES: TYPE QUANTITY

The chart below displays the quantity of illegal drugs seized in the City of McAllen during 2012. (See table: 8)

Dose units refer to one pill, tablet, capsule, or other single user quantity. The information presented are drugs seized by the McAllen Police Department and do not include drugs seized by any federal law enforcement agency.

Drug Seizures: Type and Quantity Crime In McAllen 2012 Table: 8		
Class	Type	Quantity
Cannabinoids	Marijuana	34,316.70 lbs.
Opiates	Heroin	0
Cocaine	Cocaine	85.94 lbs.
	Crack	0
Hallucinogens	Designer Drugs	0
Other Drugs	Barbiturates	0
	Amphetamines	0
	Meth-amphetamines	19.10 lbs.
	Tranquilizers	0

SELECTED NON-INDEX CRIMES:

WEAPONS ARRESTS 2012

DEFINITION

As with all Part II non-index offenses, the UCR Program collects only reports of arrests for this offense. Weapons by definition is the violation of laws or ordinances "prohibiting the manufacture, sale purchase, transportation, possession, concealment, or use of firearms, cutting instruments, explosives, incendiary devices, or other deadly weapons.

ANALYSIS

As previously indicated in this report, firearms accounted for 25% of all Aggravated Assaults in the City of McAllen.

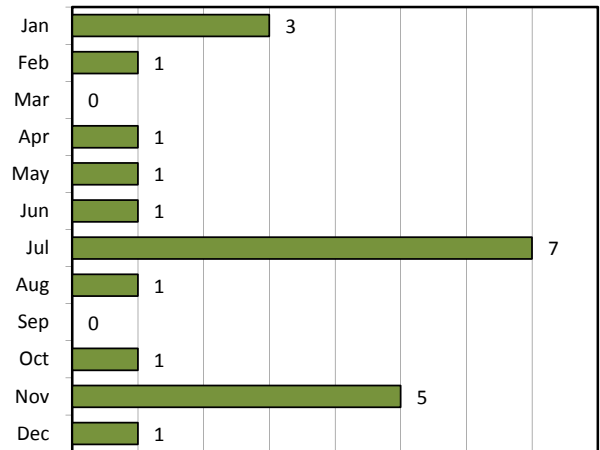
NATURE

During 2012 the month with the highest number of arrests was in July with 7 arrests. (See figure:45)

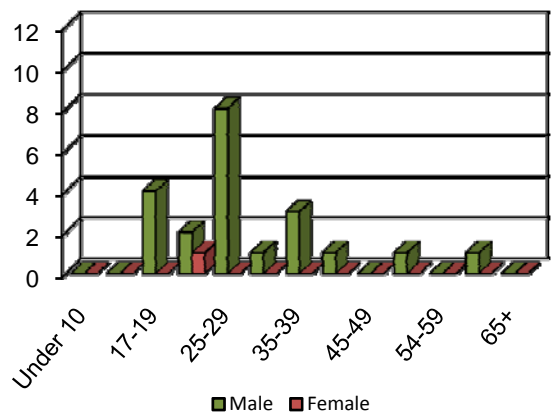
PERSONS ARRESTED

Twenty one were males and 1 female arrested for weapon charges. The largest age group of arrestees for weapon violations was the 25-29 year old group. (See figure: 46)

**Weapon Arrest: By Month
Crime In McAllen 2012
Figure: 45**



**Weapons Arrestees: By Age Group
Crime In McAllen 2012
Figure: 46**



Chapter Four

Family Violence

FAMILY VIOLENCE

DEFINITION

The Texas Family Code defines Family Violence as an Act by a member of a family or household against another member that is intended to result in physical harm, bodily injury, assault, or a threat that reasonably places the member in fear of imminent physical harm.

The Law excludes the reasonable discipline of a child and defines abuse as physical injury that results in substantial harm or genuine threat; sexual contact, intercourse, or conduct; or compelling or encourage the child to engage in sexual conduct.

By definition and for the purpose of family violence reports, “family” includes individuals related by consanguinity (blood) or affinity, marriage or former marriage, biological parents of the same child, foster children, foster parents, and member or former members of the same household (including roommates). Senate Bill 68 of the 77th Legislature amended the Family Code to include “Dating Violence”. The “Dating Relationship” means a relationship between individuals who have or have had continuing relationship of romantic or intimate nature.

ANALYSIS

During 2012 the total number of Family Violence incidents reported were 656. Incidents involved 656 victims and 649 offenders.

The most common relationship reported was the “common-law spouse category.

In family violence the use of personal weapon (strong-arm) accounted for 88 percent

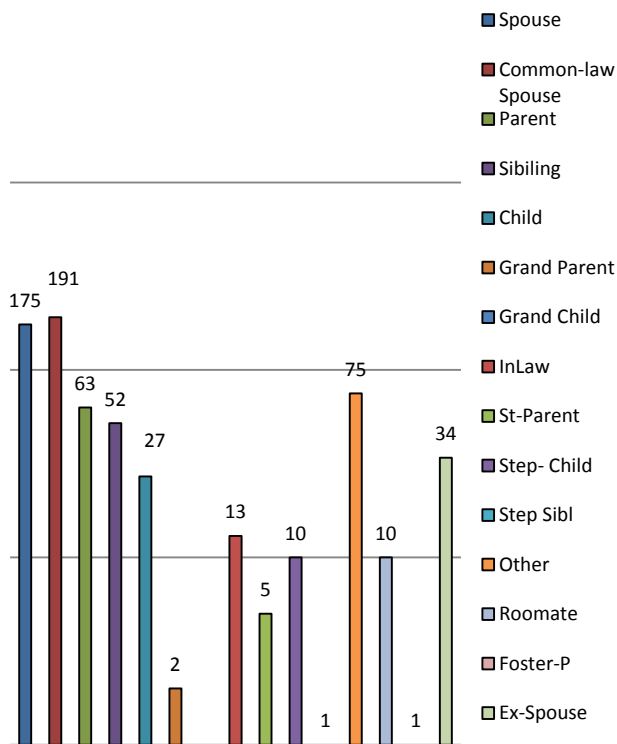
**Family Violence
Crime In McAllen 2012
Figure: 47**



During 2012 there were 656 family violence incidents reported. Of the incidents reported 50 percent accounted for victims and 50 percent were offenders. During 2012 during the course of responding to family violence incidents 3 officers were assaulted.

The victim relationship category with the most was common-law spouse with 191 incidents reported. The second most commonly reported relationship was the spouse category with 175. (See figure: 48)

**Family Violence: Relationship to Victim
Crime In McAllen 2012
Figure: 48**



FAMILY VIOLENCE DATA-2012

Table: 9

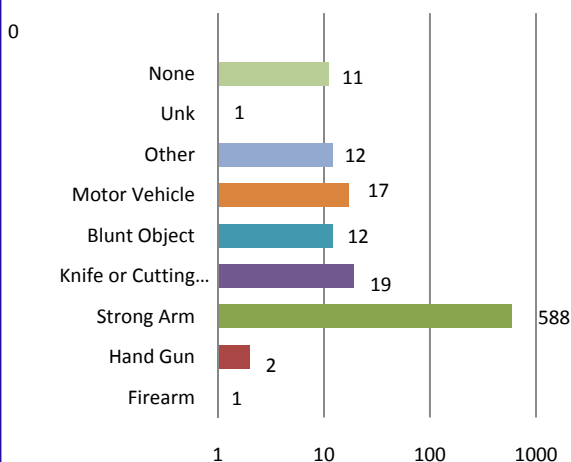
DESCRIPTION	TOTAL
Victims	656
Offenders	649
TYPE OF INJURY	
None	114
Broken Bones	2
Possible Internal	3
Severe Laceration	7
Minor Injury	524
Major Injury	6
Unconscious	4
OFFENSES	
Aggravated Assault	71
Simple Assault	582
Intimidation	6
Kidn-Abduction	0
Forced Rape	1
Forced Sodomy	0
Sexual Assault	0
Forced Fondling	0
Incest	0
Statutory Rape	0
TYPE OF WEAPON	
None	11
Firearm	1
Handgun	2
Knife	19
Blunt Object	12
Motor Vehicle	17
Personal Weapon	588
Other	12
Unknown	1

The most common weapon involved in family violence cases was the use of strong-arm , which accounted for 88 percent of the incidents reported in 2012.

For purpose of family violence report, the McAllen Police Officers who responded to disturbance calls determined the extent of injuries and all injuries were considered to be apparent injuries. The majority of reported injuries (79%) were considered to be minor injuries .

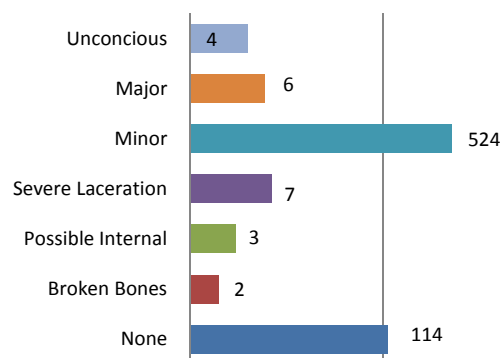
**Family Violence: Type of Weapon
Crime in McAllen 2012**

Figure: 49



**Family Violence: Injuries
Crime In McAllen 2012**

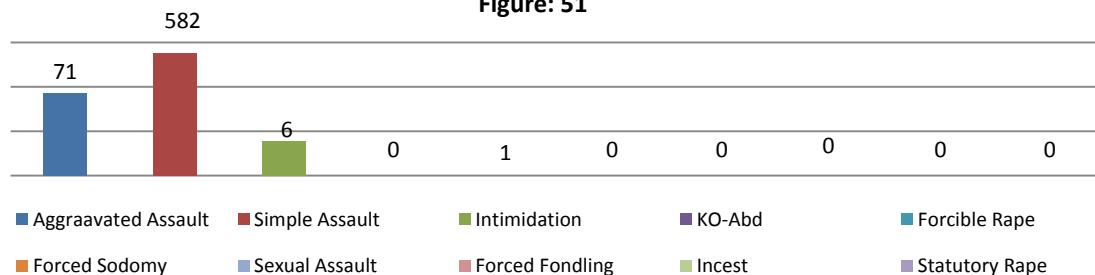
Figure: 50



Offense information in the family violence program is collected according to the Uniform Crime Reporting guidelines and does not necessarily conform to Texas state definitions. Complete offense definitions are available in the appendix to this report. Of the offenses listed in chart below, the simple assault category accounted for 88 percent of offenses.

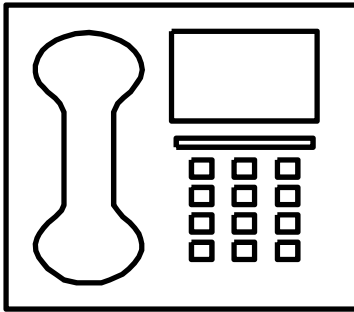
**Family Violence: By Offenses
Crime In McAllen 2012**

Figure: 51



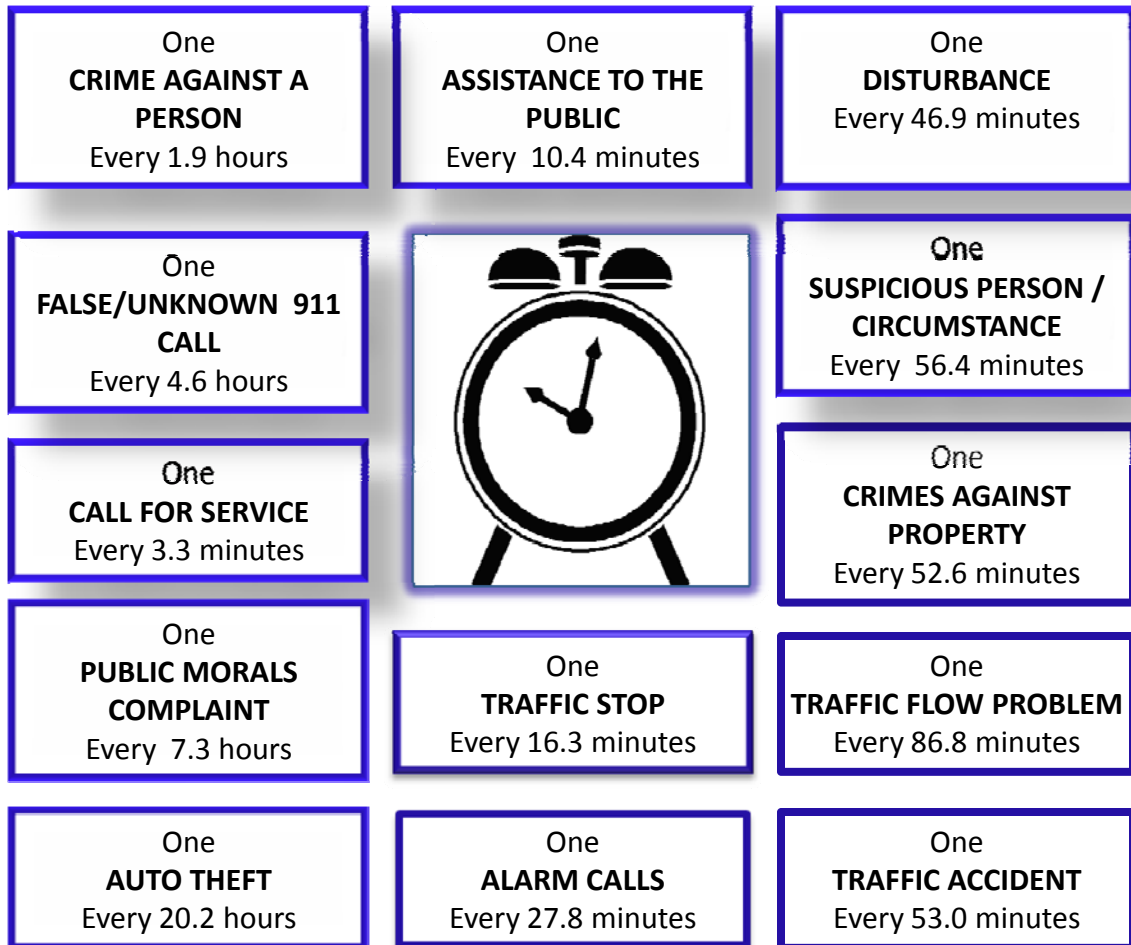
Chapter Five

Calls For Service



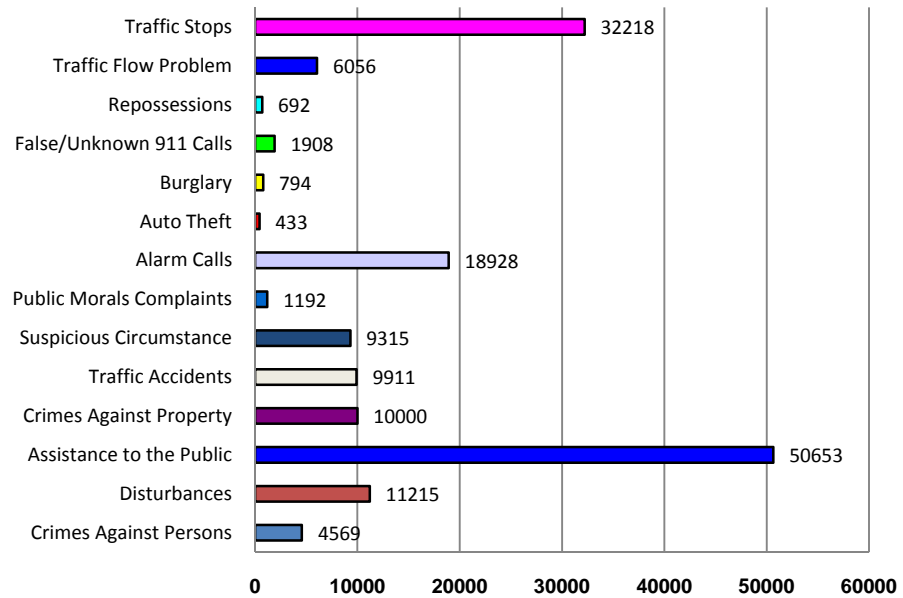
Calls for Service

During 2012, the department responded to 157,884 calls for service. This represents an increase of 8 percent when compared to 2011.

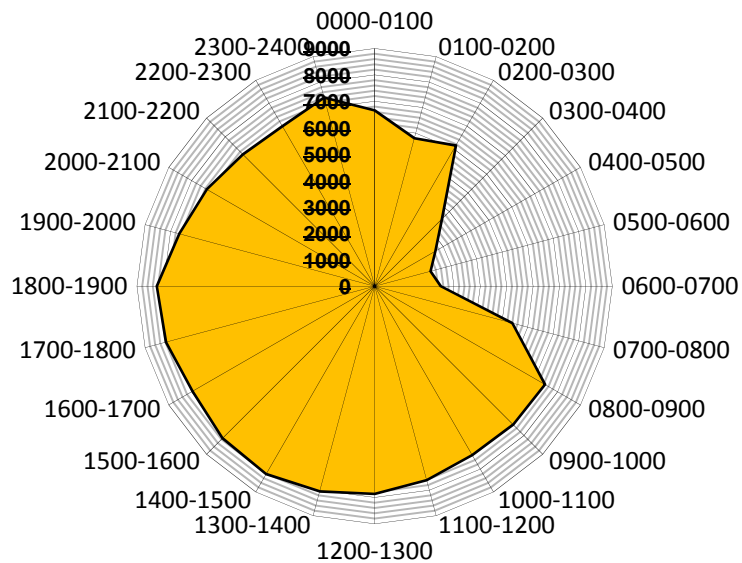


This mode of display represents the annual ratio of calls for service to fixed time intervals. This is an aggregate representation of data, it is designed to convey the annual service call experience by showing the relative frequency of occurrence.

**Calls for Service
Crime In McAllen 2012
Figure: 52**



**Calls by Hour
Crime In McAllen 2012
Figure: 53**



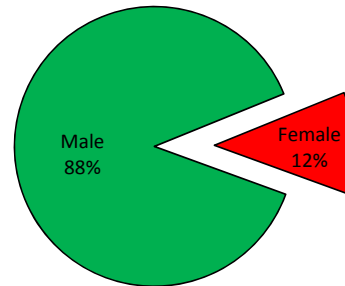
Chapter Six

Law Enforcement Personnel

COMMISSIONED PERSONNEL

The City of McAllen is currently authorized 280 sworn officers, and is at 95 percent of full strength. The McAllen Police Department employs 265 full-time sworn officers. The average number of officers per 1000 citizens of McAllen is 2.06. Of the 265 officers, 88 percent are male and 12 percent are female.

Percentage of Male and Female Sworn Officers
Figure: 54

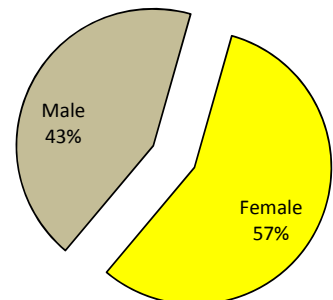


CIVILIAN PERSONNEL

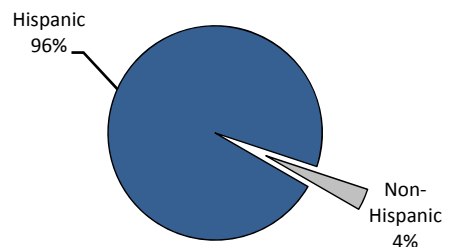
The Police Department is authorized 142 civilian employees.

The McAllen Police Department employs 134 civilian employees, which include Community Service Specialists, Emergency Communications Specialists, Custodians, Records Clerks, Administrative Assistants, Secretaries, Crime Statistician, Animal Wardens, and Fleet Maintenance Personnel. 130 of the civilian employees are non-exempt, and 4 are exempt employees. Of the civilian employees 43 percent are male and 57 percent are female.

Percentage of Male and Female Civilian Employees
Figure: 55



Employee Ethnicity
Figure: 56



Chapter Seven

McAllen Arrest Data

SUMMARY OF ARREST DATA 2012

CLASSIFICATION OF OFFENSES	JUVENILE		ADULT		TOTAL	PERCENTAGE COMBINED
MURDER & NON-NEGLIGENT MANSLAUGHTER	0	0.0%	0	0.0%	0	0.0%
MANSLAUGHTER BY NEGLIGENCE	0	0.0%	1	0.0%	1	0.0%
FORCIBLE RAPE	0	0.0%	1	0.0%	1	0.0%
ROBBERY	9	0.7%	52	0.8%	61	0.8%
AGGRAVATED ASSAULT	13	1.1%	99	1.6%	112	1.5%
BURGLARY-BREAKING OR ENTERING	35	2.9%	113	1.8%	148	2.0%
LARCENY-THEFT (EXCEPT MOTOR VEHICLE)	432	35.3%	1153	18.3%	1585	21.0%
MOTOR VEHICLE THEFT	9	0.7%	45	0.7%	54	0.7%
OTHER ASSAULTS	77	6.3%	458	7.3%	535	7.1%
ARSON	9	0.7%	2	0.0%	11	0.1%
FORGERY & COUNTERFEITING	0	0.0%	18	0.3%	18	0.2%
FRAUD	2	0.2%	55	0.9%	57	0.8%
EMBEZZLEMENT	0	0.0%	2	0.0%	2	0.0%
VANDALISM	0	0.0%	0	0.0%	0	0.0%
WEAPONS; CARRYING, POSSESSING, ETC.	1	0.1%	21	0.3%	22	0.3%
PROSTITUTION AND COMMERCIALIZED VICE	0	0.0%	10	0.2%	10	0.1%
SEX OFFENSES (EXCEPT FORCED RAPE & PROSTITUTION)	9	0.7%	20	0.3%	29	0.4%
DRUG ABUSE VIOLATIONS GRAND TOTAL	127	10.4%	480	7.6%	607	8.1%
(1) SALE/MANUFACTURING SUBTOTAL	64	5.2%	53	0.8%	117	1.6%
OPIUM, COCAINE AND THEIR DERIVATIVES	7	0.6%	17	0.3%	24	0.3%
MARIJUANA	57	4.7%	32	0.5%	89	1.2%
SYNTHETIC/MANUFACTURED DRUGS	0	0.0%	0	0.0%	0	0.0%
OTHER DANGEROUS NON-NARCOTIC DRUGS	0	0.0%	4	0.1%	4	0.1%
(2) POSSESSION SUBTOTAL	63	5.1%	427	6.8%	490	6.5%
OPIUM, COCAINE AND THEIR DERIVATIVES	21	1.7%	104	1.6%	125	1.7%
MARIJUANA	42	3.4%	317	5.0%	359	4.8%
SYNTHETIC/MANUFACTURED DRUGS	0	0.0%	0	0.0%	0	0.0%
OTHER DANGEROUS NON-NARCOTIC DRUGS	0	0.0%	6	0.1%	6	0.1%
GAMBLING GRAND TOTAL	0	0.0%	0	0.0%	0	0.0%
BOOKMAKING (HORSE AND SPORT BOOK)	0	0.0%	0	0.0%	0	0.0%
NUMBERS AND LOTTERY	0	0.0%	0	0.0%	0	0.0%
ALL OTHER GAMBLING	0	0.0%	0	0.0%	0	0.0%
OFFENSES AGAINST FAMILY AND CHILDREN	1	0.1%	14	0.2%	15	0.2%
DRIVING UNDER THE INFLUENCE	14	1.1%	811	12.8%	825	10.9%
LIQUOR LAWS	2	0.2%	1	0.0%	3	0.0%
DRUNKNESS	51	4.2%	1409	22.3%	1460	19.4%
DISORDERLY CONDUCT	11	0.9%	98	1.6%	109	1.4%
VAGRANCY	0	0.0%	4	0.1%	4	0.1%
ALL OTHER OFFENSES (EXCEPT TRAFFIC)	78	6.4%	1448	22.9%	1526	20.2%
CURFEW AND LOITERING LAW VIOLATIONS	0	0.0%	0	0.0%	0	0.0%
RUN-AWAYS	345	28.2%	0	0.0%	345	4.6%
Totals	1225	100%	6315	100%	7540	100%

JUVENILE ARREST DATA 2012

CLASSIFICATION OF OFFENSES	Under 10		10-12		13-14		15		16		17		Total
GENDER	M	F	M	F	M	F	M	F	M	F	M	F	
MURDER & NON-NEGLIGENT MANSLAUGHTER	0	0	0	0	0	0	0	0	0	0	0	0	0
MANSLAUGHTER BY NEGLIGENCE	0	0	0	0	0	0	0	0	0	0	0	0	0
FORCIBLE RAPE	0	0	0	0	0	0	0	0	0	0	0	0	0
ROBBERY	0	0	0	0	1	0	4	0	1	0	3	0	9
AGGRAVATED ASSAULT	0	0	0	0	4	0	1	0	4	1	1	2	13
BURGLARY-BREAKING OR ENTERING	0	0	1	1	11	1	10	0	5	2	4	0	35
LARCENY-THEFT (EXCEPT MOTOR VEHICLE)	0	0	16	11	54	35	56	37	62	47	68	46	432
MOTOR VEHICLE THEFT	0	0	0	0	2	0	2	0	2	1	2	0	9
OTHER ASSAULTS	0	0	7	2	12	14	11	4	10	8	4	5	77
ARSON	0	0	4	3	1	1	0	0	0	0	0	0	9
FORGERY & COUNTERFEITING	0	0	0	0	0	0	0	0	0	0	0	0	0
FRAUD	0	0	0	0	0	0	0	1	0	0	1	0	2
EMBEZZLEMENT	0	0	0	0	0	0	0	0	0	0	0	0	0
VANDALISM	0	0	0	0	0	0	0	0	0	0	0	0	0
WEAPONS; CARRYING, POSSESSING, ETC.	0	0	0	0	0	0	0	0	0	0	1	0	1
PROSTITUTION AND COMMERCIALIZED VICE	0	0	0	0	0	0	0	0	0	0	0	0	0
SEX OFFENSES (EXCEPT FORCED RAPE & PROSTITUTION)	0	0	0	0	4	0	0	0	4	0	0	1	9
DRUG ABUSE VIOLATIONS GRAND TOTAL	0	0	3	0	15	2	14	2	37	3	46	5	127
(1) SALE/MANUFACTURING SUBTOTAL	0	0	2	0	8	1	9	2	20	1	19	2	64
OPIUM, COCAINE AND THEIR DERIVATIVES	0	0	0	0	1	0	1	0	3	0	2	0	7
MARIJUANA	0	0	2	0	7	1	8	2	17	1	17	2	57
SYNTHETIC/MANUFACTURED DRUGS	0	0	0	0	0	0	0	0	0	0	0	0	0
OTHER DANGEROUS NON-NARCOTIC DRUGS	0	0	0	0	0	0	0	0	0	0	0	0	0
(2) POSSESSION SUBTOTAL	0	0	1	0	7	1	5	0	17	2	27	3	63
OPIUM, COCAINE AND THEIR DERIVATIVES	0	0	1	0	2	0	2	0	6	2	7	1	21
MARIJUANA	0	0	0	0	5	1	3	0	11	0	20	2	42
SYNTHETIC/MANUFACTURED DRUGS	0	0	0	0	0	0	0	0	0	0	0	0	0
OTHER DANGEROUS NON-NARCOTIC DRUGS	0	0	0	0	0	0	0	0	0	0	0	0	0
GAMBLING GRAND TOTAL	0	0	0	0	0	0	0	0	0	0	0	0	0
BOOKMAKING (HORSE AND SPORT BOOK)	0	0	0	0	0	0	0	0	0	0	0	0	0
ALL OTHER GAMBLING	0	0	0	0	0	0	0	0	0	0	0	0	0
OFFENSES AGAINST FAMILY AND CHILDREN	0	0	0	0	0	0	0	0	0	0	0	1	1
DRIVING UNDER THE INFLUENCE	0	0	0	0	0	0	1	0	2	0	10	1	14
LIQUOR LAWS	0	0	0	0	0	0	1	0	0	0	1	0	2
DRUNKNESS	0	0	0	0	2	0	1	0	10	3	27	8	51
DISORDERLY CONDUCT	0	0	1	0	4	0	1	1	0	2	2	0	11
ALL OTHER OFFENSES (EXCEPT TRAFFIC)	0	0	4	1	12	9	7	4	18	6	13	4	78
CURFEW AND LOITERING LAW VIOLATIONS	0	0	0	0	0	0	0	0	0	0	0	0	0
RUN-AWAYS	6	4	34	15	48	60	34	50	38	56	0	0	345
Totals	6	4	70	33	170	122	143	99	193	129	183	73	1225

ARREST DATA 2012

MALE

CLASSIFICATION OF OFFENSES	18	19	20	21	22	23	24	25-29	30-34	35-39	40-44	45-49	50-54	55-59	60-64	65+	Total
MURDER & NON-NEGLIGENT MANSLAUGHTER	0	0	0	0	0	0	0	0	0	0	0	0	0	0	0	0	0
MANSLAUGHTER BY NEGLIGENCE	0	0	0	0	0	0	0	0	0	0	0	0	0	0	0	0	0
FORCIBLE RAPE	0	0	0	0	0	0	0	0	0	0	1	0	0	0	0	0	1
ROBBERY	9	8	2	2	4	0	1	6	8	2	5	1	1	0	0	0	49
AGGRAVATED ASSAULT	7	5	3	5	4	1	3	13	14	10	10	4	2	3	1	1	86
BURGLARY-BREAKING OR ENTERING	13	10	5	5	1	4	8	16	16	10	13	1	0	0	0	1	103
LARCENY-THEFT (EXCEPT MOTOR VEHICLE)	75	58	57	44	19	22	20	100	82	45	50	16	20	7	2	3	620
MOTOR VEHICLE THEFT	2	1	4	1	2	1	3	10	6	5	2	0	1	0	1	0	39
OTHER ASSAULTS	14	10	16	17	11	13	13	68	55	63	33	28	17	5	2	5	370
ARSON	0	0	0	0	0	0	0	1	0	0	0	0	0	0	0	0	1
FORGERY & COUNTERFEITING	0	2	1	2	0	0	0	2	2	0	0	0	0	0	0	0	9
FRAUD	1	0	3	0	2	1	4	6	10	3	3	0	0	1	0	1	35
EMBEZZLEMENT	0	0	0	1	0	0	0	0	0	0	0	0	0	0	0	0	1
VANDALISM	0	0	0	0	0	0	0	0	0	0	0	0	0	0	0	0	0
WEAPONS; CARRYING, POSSESSING, ETC.	0	3	2	0	0	0	0	8	1	3	1	0	1	0	1	0	20
PROSTITUTION AND COMMERCIALIZED VICE	0	0	0	0	0	0	0	0	0	1	0	0	0	0	0	0	1
SEX OFFENSES (EXCEPT FORCED RAPE & PROSTITUTION)	2	2	1	0	1	0	0	2	1	1	3	3	0	2	1	0	19
DRUG ABUSE VIOLATIONS GRAND TOTAL	42	44	28	23	32	18	21	69	41	21	24	8	6	2	3	0	382
(1) SALE/MANUFACTURING SUBTOTAL	5	3	3	1	3	0	0	7	10	1	3	0	1	0	0	0	37
OPIUM, COCAINE AND THEIR DERIVATIVES	0	1	1	0	0	0	0	3	4	0	2	0	1	0	0	0	12
MARIJUANA	5	2	2	0	2	0	0	4	5	0	1	0	0	0	0	0	21
SYNTHETIC/MANUFACTURED DRUGS	0	0	0	0	0	0	0	0	0	0	0	0	0	0	0	0	0
OTHER DANGEROUS NON-NARCOTIC DRUGS	0	0	0	1	1	0	0	0	1	1	0	0	0	0	0	0	4
(2) POSSESSION SUBTOTAL	37	41	25	22	29	18	21	62	31	20	21	8	5	2	3	0	345
OPIUM, COCAINE AND THEIR DERIVATIVES	5	8	5	3	6	3	2	19	12	7	10	1	2	1	1	0	85
MARIJUANA	31	31	20	18	23	15	19	43	19	13	11	7	3	1	2	0	256
SYNTHETIC/MANUFACTURED DRUGS	0	0	0	0	0	0	0	0	0	0	0	0	0	0	0	0	0
OTHER DANGEROUS NON-NARCOTIC DRUGS	1	2	0	1	0	0	0	0	0	0	0	0	0	0	0	0	4
GAMBLING GRAND TOTAL	0	0	0	0	0	0	0	0	0	0	0	0	0	0	0	0	0
BOOKMAKING (HORSE AND SPORT BOOK)	0	0	0	0	0	0	0	0	0	0	0	0	0	0	0	0	0
ALL OTHER GAMBLING	0	0	0	0	0	0	0	0	0	0	0	0	0	0	0	0	0
OFFENSES AGAINST FAMILY AND CHILDREN	2	1	0	1	0	0	0	2	2	1	2	1	0	0	0	0	12
DRIVING UNDER THE INFLUENCE	20	30	57	43	26	39	31	142	76	73	47	38	20	9	3	4	658
LIQUOR LAWS	0	0	1	0	0	0	0	0	0	0	0	0	0	0	0	0	1
DRUNKNESS	61	60	75	80	66	59	59	181	115	121	102	84	31	32	9	10	1145
DISORDERLY CONDUCT	3	2	4	4	3	5	3	20	5	8	2	5	4	2	2	1	73
VAGRANCY	0	0	0	0	0	0	0	0	0	0	0	0	0	1	1	0	2
ALL OTHER OFFENSES (EXCEPT TRAFFIC)	42	47	64	59	70	57	45	236	195	132	74	41	40	6	6	9	1123
Totals	293	283	323	287	241	220	211	882	629	499	372	230	143	70	32	35	4750

ARREST DATA 2012
FEMALE

CLASSIFICATION OF OFFENSES	18	19	20	21	22	23	24	25-29	30-34	35-39	40-44	45-49	50-54	55-59	60-64	65+	Total
MURDER & NON-NEGLIGENT MANSLAUGHTER	0	0	0	0	0	0	0	0	0	0	0	0	0	0	0	0	0
MANSLAUGHTER BY NEGLIGENCE	1	0	0	0	0	0	0	0	0	0	0	0	0	0	0	0	1
FORCIBLE RAPE	0	0	0	0	0	0	0	0	0	0	0	0	0	0	0	0	0
ROBBERY	0	0	0	0	0	0	0	2	1	0	0	0	0	0	0	0	3
AGGRAVATED ASSAULT	0	0	0	0	1	1	0	1	3	3	1	3	0	0	0	0	13
BURGLARY-BREAKING OR ENTERING	1	1	2	1	1	0	1	2	1	0	0	0	0	0	0	0	10
LARCENY-THEFT (EXCEPT MOTOR VEHICLE)	65	49	41	33	19	12	19	84	62	44	27	21	32	13	9	3	533
MOTOR VEHICLE THEFT	0	1	0	0	1	1	0	1	2	0	0	0	0	0	0	0	6
OTHER ASSAULTS	4	7	5	3	4	7	5	15	11	9	7	5	6	0	0	0	88
ARSON	0	0	0	1	0	0	0	0	0	0	0	0	0	0	0	0	1
FORGERY & COUNTERFEITING	0	1	0	0	0	0	0	0	6	0	1	1	0	0	0	0	9
FRAUD	0	1	0	0	1	3	2	2	5	3	2	0	0	1	0	0	20
EMBEZZLEMENT	0	0	0	0	0	0	0	1	0	0	0	0	0	0	0	0	1
VANDALISM	0	0	0	0	0	0	0	0	0	0	0	0	0	0	0	0	0
WEAPONS; CARRYING, POSSESSING, ETC.	0	0	0	0	0	0	1	0	0	0	0	0	0	0	0	0	1
PROSTITUTION AND COMMERCIALIZED VICE	0	0	0	0	0	0	0	0	4	0	1	3	1	0	0	0	9
SEX OFFENSES (EXCEPT FORCED RAPE & PROSTITUTION)	0	0	0	0	0	0	0	0	1	0	0	0	0	0	0	0	1
DRUG ABUSE VIOLATIONS GRAND TOTAL	18	11	11	11	9	5	9	11	5	5	2	1	0	0	0	0	98
(1) SALE/MANUFACTURING SUBTOTAL	2	1	1	2	2	1	2	2	0	2	1	0	0	0	0	0	16
OPIUM, COCAINE AND THEIR DERIVATIVES	0	1	1	0	0	0	0	0	0	2	1	0	0	0	0	0	5
MARIJUANA	2	0	0	2	2	1	2	2	0	0	0	0	0	0	0	0	11
SYNTHETIC/MANUFACTURED DRUGS	0	0	0	0	0	0	0	0	0	0	0	0	0	0	0	0	0
OTHER DANGEROUS NON-NARCOTIC DRUGS	0	0	0	0	0	0	0	0	0	0	0	0	0	0	0	0	0
(2) POSSESSION SUBTOTAL	16	10	10	9	7	4	7	9	5	3	1	1	0	0	0	0	82
OPIUM, COCAINE AND THEIR DERIVATIVES	1	3	1	3	2	1	1	2	1	2	1	1	0	0	0	0	19
MARIJUANA	15	7	9	6	5	3	6	6	3	1	0	0	0	0	0	0	61
SYNTHETIC/MANUFACTURED DRUGS	0	0	0	0	0	0	0	0	0	0	0	0	0	0	0	0	0
OTHER DANGEROUS NON-NARCOTIC DRUGS	0	0	0	0	0	0	0	1	1	0	0	0	0	0	0	0	2
GAMBLING GRAND TOTAL	0	0	0	0	0	0	0	0	0	0	0	0	0	0	0	0	0
BOOKMAKING (HORSE AND SPORT BOOK)	0	0	0	0	0	0	0	0	0	0	0	0	0	0	0	0	0
ALL OTHER GAMBLING	0	0	0	0	0	0	0	0	0	0	0	0	0	0	0	0	0
OFFENSES AGAINST FAMILY AND CHILDREN	0	0	0	0	0	0	1	0	0	0	0	1	0	0	0	0	2
DRIVING UNDER THE INFLUENCE	9	12	5	14	10	12	11	24	17	15	12	2	8	1	1	0	153
LIQUOR LAWS	0	0	0	0	0	0	0	0	0	0	0	0	0	0	0	0	0
DRUNKNESS	12	21	23	26	13	15	17	44	25	25	22	13	8	0	0	0	264
DISORDERLY CONDUCT	3	1	4	1	2	2	0	4	6	1	1	0	0	0	0	0	25
VAGRANCY	0	0	0	0	2	0	0	0	0	0	0	0	0	0	0	0	2
ALL OTHER OFFENSES (EXCEPT TRAFFIC)	10	12	15	16	14	14	22	80	52	36	26	14	9	4	1	0	325
Totals	123	117	106	106	77	72	88	271	201	141	102	64	64	19	11	3	1565

APPENDICES

UNIFORM CRIME REPORTING OFFENSES

Part I Offenses

Offenses in Uniform Crime Reporting are divided into two groups designated as Part I and Part II offenses. Offense and arrest information is reported for the Part I offenses, while only arrest information is reported for Part II offenses.

Criminal Homicide – (a) Murder and non-negligent manslaughter: All willful felonious homicides as distinguished from deaths caused by negligence. Excluded are attempts to kill, assaults, to kill, suicides, accidental deaths and justifiable homicides. Justifiable homicides are limited to: the killing of a person by a law enforcement officer in the line of duty; and the killing of a person in the act of committing a felony by a private citizen; (b) Manslaughter by negligence: any death which the police investigation established was primarily attributable to gross negligence of some individual other than the victim.

Murder and Non-Negligent Manslaughter – The willful (non-negligent) killing of one human being by another. This includes any death due to injuries received in a fight, argument, quarrel, assault, or commission of a crime. Suicides, accidental deaths, assaults to murder, traffic fatalities and attempted murders are not included.

Justifiable Homicide – The killing of a person by a law enforcement officer in the line of duty; or the killing (during the commission of a felony) of a felon by a private citizen.

Manslaughter by Negligence – The killing of another person through gross negligence.

Forcible Rape – The carnal knowledge of a female forcibly and against her will.

Robbery – The taking or attempting to take anything of value from the care, custody, or control of a person or persons by force or threat of force or violence and/or by putting the victim in fear.

Aggravated Assault – An unlawful attack by one person upon another for the purpose of inflicting severe or aggravated bodily injury. This type of assault is usually accompanied by the use of a weapon or by means likely to produce death or great bodily harm.

Burglary – The unlawful entry of a structure to commit a felony or theft. This includes breaking and entering with intent to commit a larceny; housebreaking; safe cracking; and all attempts at these offenses.

Larceny-Theft – The unlawful taking, carrying, leading, or riding away of property from the possession or constructive possession of another. This includes pocket-picking, purse-snatching, shoplifting, theft from motor vehicles, theft of motor vehicle parts and accessories, theft of bicycles, theft from buildings, theft from coin-operated machines, and all thefts that don't fit into the above mentioned categories.

Motor Vehicle Theft – The theft or attempted theft of a motor vehicle, which is defined as a self-propelled vehicle that runs on land surface and not on rails.

Glossary of Terms

Adult – In Texas, an adult is a person 17 years of age or over. National law provides that adults are age 18 or over. Unless otherwise indicated, this publication follows the state definition.

Cleared by Arrest or Exceptional Means – For Uniform Crime Reporting purposes, an offense is cleared by arrest or solved when at least one person is arrested, charged with the commission of an offense and turned over to court for prosecution. In certain situations, police are not able to follow these three steps and, if the following four conditions can be met, the offense can be cleared exceptionally: (1) the investigation has definitely established the identity of the offender; (2) there is enough information to support an arrest, charge, and turning over to the court for prosecution; (3) the exact location of the offender is known so that he could be taken into custody; (4) there is some reason outside the police control that prevents the arresting, charging, and prosecuting of the offender.

Crime Index – The sum of seven index offenses used to measure the extent, fluctuation and distribution of a crime in a given geographical area. Crime classifications used in the Crime Index are: murder, rape, robbery, aggravated assault, burglary, larceny-theft and motor vehicle theft. While arson is also an index offense, it is not part of the Crime Index.

Crime Rate – The number of offenses per 100,000 inhabitants. To calculate a crime rate, divide the population by 100,000 and then divide the number of offenses by that answer. The crime rate is useful in determining the relative frequency of crime without regard to fluctuations in population.

Index Crime – A crime for which reports of offenses committed are collected. Index crimes are murder, rape, robbery, aggravated assault, burglary, larceny-theft, motor vehicle theft and arson.

Juvenile – In Texas, a juvenile is a person 16 years of age or under.

Non-Violent Crime – Property crimes; the index offenses of burglary, larceny-theft and motor vehicle theft.

Personal Weapon – The use of hands, feet, fists and teeth as a weapon to commit a crime; also termed strong-arm weapon.

Strong-Arm Weapons – The use of hands, feet, fists and teeth as a weapon to commit a crime. Also termed personal weapon.

Threat – A declared intent to inflict bodily harm on a person.

Violent Crime – Consists of the Index Offenses of murder, forcible rape, robbery and aggravated assault. Also referred to as crimes against persons.