



CITY OF McALLEN

JAVIER VILLALOBOS, Mayor
JOAQUIN "J.J." ZAMORA, Mayor Pro Tem & Commissioner District 2
TONY AGUIRRE, JR., Commissioner District 1
J. OMAR QUINTANILLA, Commissioner District 3
TANIA RAMIREZ, Commissioner District 4
VICTOR "SEBY" HADDAD, Commissioner District 5
PEPE CABEZA DE VACA, Commissioner District 6

ROEL "ROY" RODRIGUEZ, P.E., City Manager

LEGAL NOTICE

You are hereby notified that the Board of Commissioners of the City of McAllen, Hidalgo County, Texas, will hold a public hearing on Monday, January 10, 2022, at 5:00 P.M. at McAllen City Hall Commission Chambers, 1300 Houston Avenue, McAllen, Texas. The intent of the public hearing is to institute annexation proceedings, to adopt the annexation ordinance, and to order publication of the ordinance for the following described tract of land:

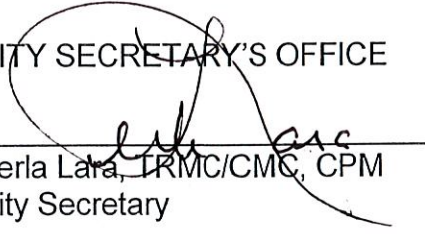
10.45 acres out of Lots 147 and 148, Pride o' Texas Subdivision, Hidalgo County, Texas; 9500 North Ware Road. (ANX2021-0011)

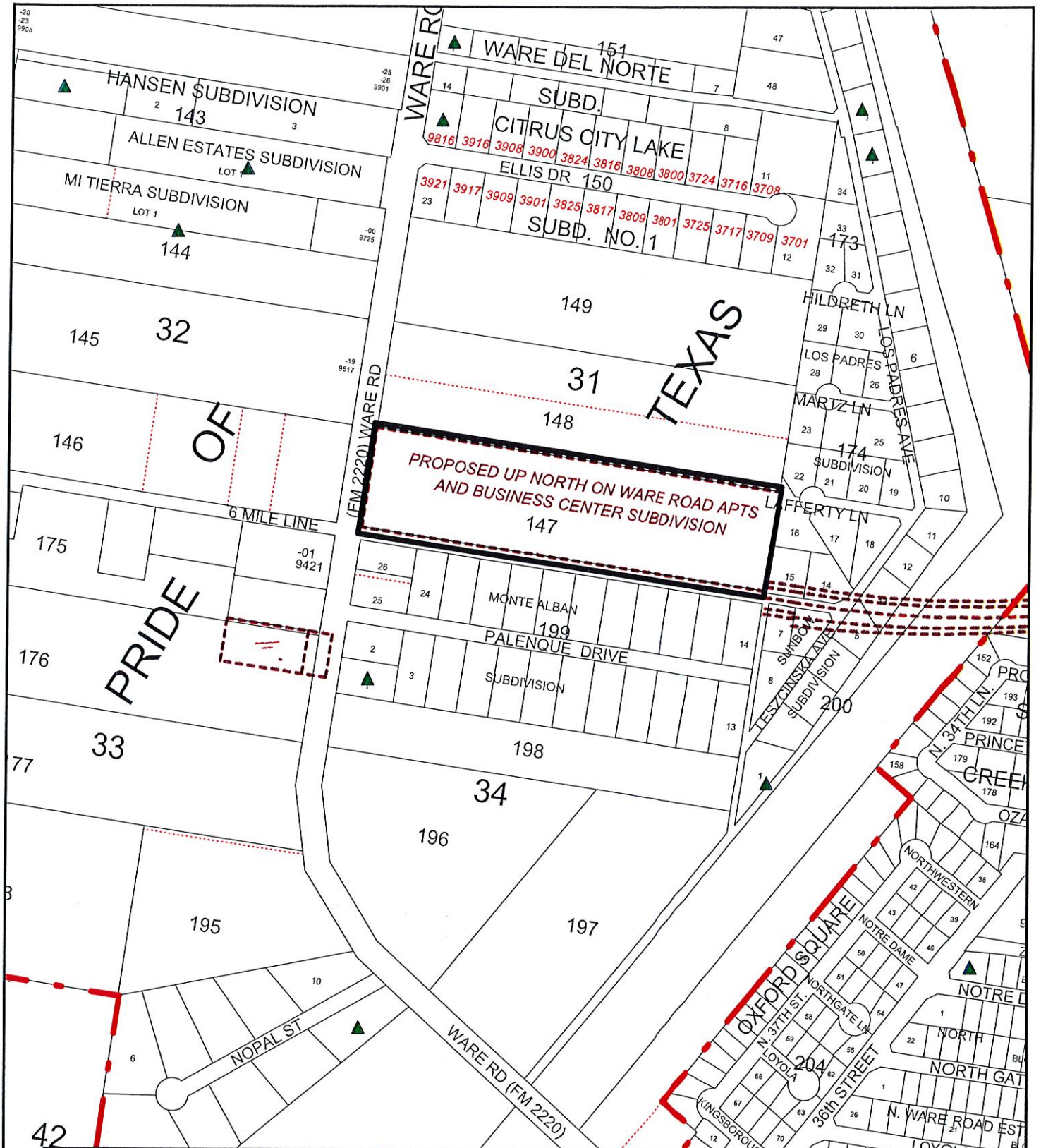
All interested persons are invited to appear and be heard. Teleconference options are available. If you wish to make a comment from home, please contact the City Secretary's Office at (956) 681-1020 by no later than 3:30 p.m. on January 10, 2022. You may view the meeting live here:

<https://www.mcallen.net/departments/media/mcn-1300-live>.

WITNESS MY HAND this this 29th day of December, 2021.

CITY SECRETARY'S OFFICE


Perla Lara, TRMC/CMC, CPM
City Secretary



CITY OF McALLEN
PLANNING DEPARTMENT

LEGEND
SCALE: N.T.S.

AREA MAP

SUBJECT PROPERTY

200 FT. NOTIFICATION BOUNDARY

1/4 MILE RADIUS



ZONING LEGEND

A-O (AGRICULTURAL & OPEN SPACE)	R-3A (APARTMENTS)	R-4 (MOBILE HOMES)	C-3 (GENERAL BUSINESS)	I-1 (LIGHT INDUSTRIAL)
R-1 (SINGLE FAMILY RESIDENTIAL)	R-3C (CONDOMINIUMS)	C-1 (OFFICE BUILDING)	C-3L (LIGHT COMMERCIAL)	I-2 (HEAVY INDUSTRIAL)
R-2 (DUPLIX-FOURPLEX)	R-3T (TOWNHOUSES)	C-2 (NEIGHBORHOOD COMMERCIAL)	C-4 (COMMERCIAL INDUSTRIAL)	(SPECIAL DISTRICT)

This map is a representation of the official zoning map. For zoning verification contact the Planning Department at 956-681-1250, or select city maps at <http://www.mcallen.net>. Furthermore, this map is for informational purposes and is not prepared for or suitable for legal, engineering, or surveying purposes. It does not represent an on-ground survey and represent approximate relative location of property boundaries.