



Bus Rapid Transit and Transit Oriented Development Feasibility Study

What is Bus Rapid Transit?

Bus Rapid Transit (BRT) is a high-quality bus-based transit system that runs on dedicated or shared lanes.

It provides:

Better connections to jobs, schools, shopping, parks, and community destinations.

Safer streets with dedicated or shared travel lanes, improved pedestrian crossings, and well-designed stations.

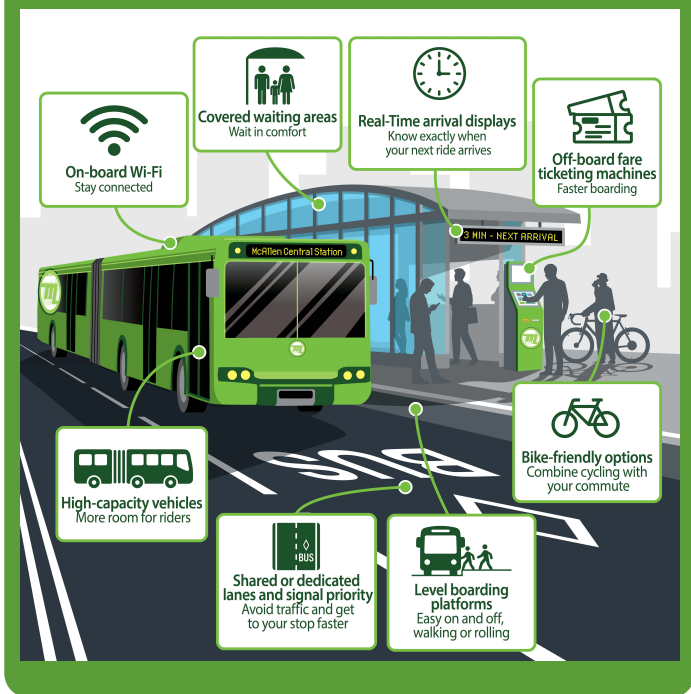
Less crowded roads by giving people a fast north-south bus service with quick trips and frequent service.

Cost-effective transportation by providing high-quality service at a lower cost.

Cleaner air by using electric, hybrid, or low-pollution buses.



BRT Features



STUDY AREA

Legend

- Alternative 1 - 23rd St
- Alternative 2 - Bicentennial Blvd
- Alternative 3 - 10th St
- Alternative 1A/2A/3A (Alternatives)
- BRT Study Area
- Metro McAllen's Transit Hub
- Parks/Open Space
- Railroad
- Point of Interest

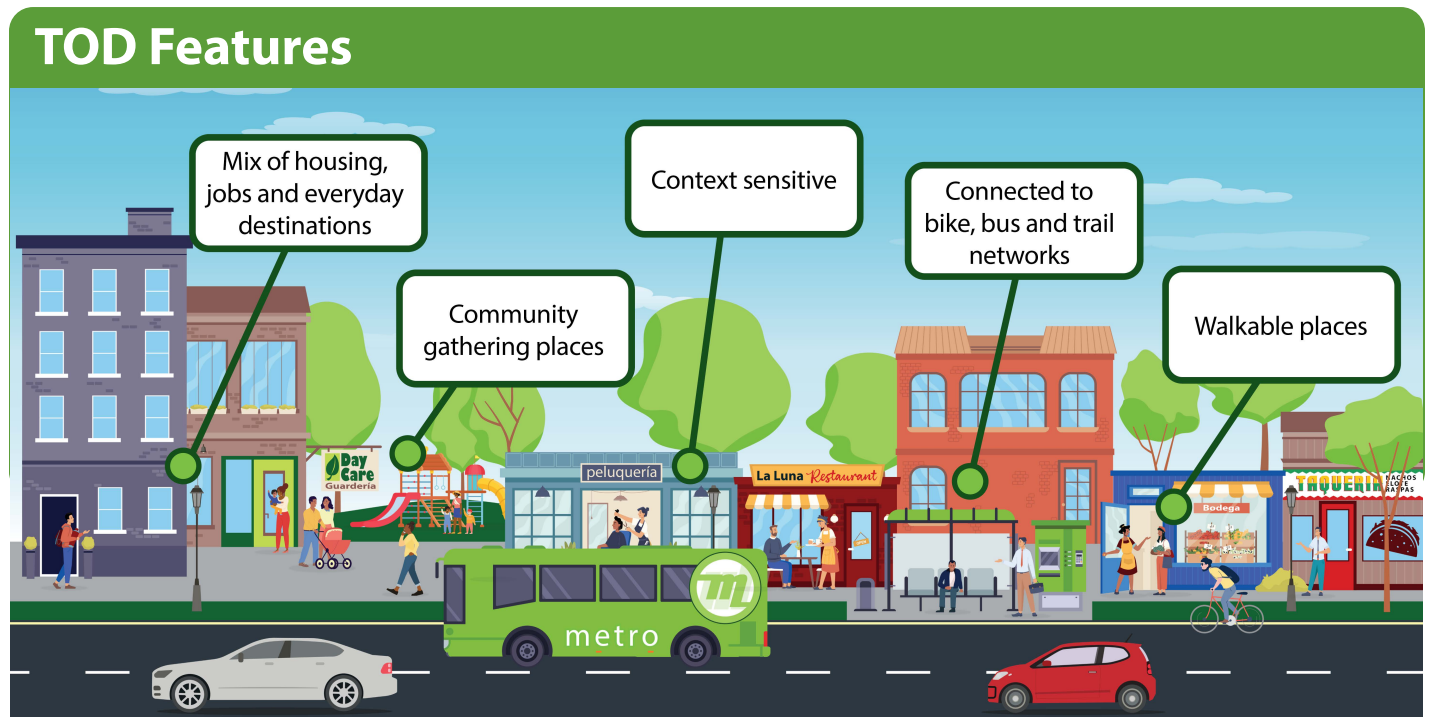
What is Transit Oriented Development?

Transit Oriented Development (TOD) focuses on creating walkable neighborhoods with housing, jobs, and services near public transit. It provides:

More transportation options to make it easier to walk, bike, or take transit instead of relying on a car.

People-focused neighborhoods that create safer streets, better public spaces, and convenient access to shops and services.

Stronger local economy that supports new businesses, attracts visitors, and encourages investment near transit.



Project Timeline

Phase 1: Data Collection (Summer 2026)

- **Analyze** data by reviewing plans and policies to identify mobility, land use, and community needs.
- **Evaluate** corridors to compare route alternatives and identify potential station locations. Gather input by using surveys and pop-up events to collect community feedback on BRT/TOD needs and route alternatives.

Phase 2: Develop Final Plan (Fall/Winter 2026)

- **Create a vision** for BRT + TOD to define what success looks like and establish guiding principles.
- **Identify** station locations based on network connectivity and TOD opportunities.
- **Develop** station area plans on TOD opportunities near potential BRT stations.
- **Publish** final plan with route and station location recommendations, TOD opportunities, and implementation guidelines.

We Want Your Feedback!

Your input will help plan safer, more convenient travel options, and improve quality of life in McAllen. Scan this QR code to take the survey: surveymonkey.com/r/BHN9P3M



Learn More

Visit our website for more information: mcallen.net/metro/BRTstudy.html.

Have questions?
Please email us at metromcallen@mcallen.net.

